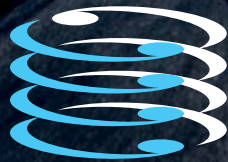


November 2016

THE TANK PLAN

What you need to know about the TANK Group
and its Plan Change for the Tutaekurī, Ahuriri,
Ngaruroro and Karamū catchments



TANK

**HAWKE'S BAY PEOPLE
ARE RIGHT TO EXPECT
SAFE, HEALTHY RIVERS
AND WATERWAYS**

**E TIKA ANA TE TŪMANAKO
NUI O NGĀ TĀNGATA O
TE MATAU-A-MĀUI KIA
HAUMARU, Ā, KIA TINO
ORA HOKI NGĀ AWA ME
NGĀ ARAWAI**

Land and water use in each part of our region differs and each waterway is unique. The TANK Group focuses on the Tutaekurī, Ahuriri, Ngaruroro and Karamū catchments.

The TANK Group first met in 2012. It produced an interim report in 2014 giving some high level direction for water and land management in the TANK catchments.

The Group has continued meeting since then, but have been waiting for critical science investigation and modelling to complete decision-making.

Its purpose is to recommend limits and measures for a workable TANK Plan Change, that gives clear guidance to consent holders and resource users.

A draft Plan Change is expected by the end of 2017.

TANK's collaborative membership includes more than 30 groups, representing Tāngata Whenua, primary sector, councils and environmentalists. It will recommend land and water management options to the Regional Council to benefit the Tutaekurī, Ahuriri estuary, Ngaruroro and Karamū rivers, and their feeder tributaries.

Information about each TANK meeting and progress is at hbrc.govt.nz, search: **#tank**.



- Tutaekuri - 83,105 hectares
- Ahuriri - 14,564 hectares
- Ngaururoro - 201,246 hectares
- Karamu - 51,462 hectares

The image features three tall, dark wooden poles standing in a field of tall, golden-brown grass. The poles are intricately carved with various symbols and figures. The background shows a wide, flat landscape with a body of water and a line of trees under a blue sky with scattered white clouds. A semi-transparent blue overlay covers the top half of the image, and a blue oval shape is in the bottom left corner.

**WITH YOUR BASKET AND MY BASKET
THE PEOPLE WILL LIVE**

**NAKU TE ROUROU NAU TE ROUROU
KA ORA AI TE IWI**

Progress so far

The TANK science programme will wrap up in 2017. One of the major developments is a complex ground and surface water model constructed to understand the connections between river flows, groundwater levels, water abstraction and oxygen levels in lowland streams. The model will also help us better understand nutrient pathways and concentrations in ground and surface water.

Other studies have helped to understand sediment loss risks, and measures available to limit the adverse effects of sediment on freshwater and estuary ecosystems.

The Group has looked at what values to manage the water for, and will be developing rules and wording to reflect the wide range of values expressed both in pakeha and Māori terms – see the following pages.

As part of this process, the Group is looking at indicators that help demonstrate whether these values are being met. They include things such as MCI (Macroinvertebrate index), a measure to assess the health of aquatic insect populations, algae and macrophytes (water plants), nutrient concentrations (that may affect algal growth) and sediment levels.

Nutrient and bacteria concentrations in the Ngaruroro are at very good levels. The Tutaekuri is also in a good state, but with slightly higher concentrations of nutrients. Areas for improvement include:

- Sediment (water clarity and deposited sediment) in the lower reaches of the Ngaruroro and Tutaekuri, and in the Ahuriri and Waitangi estuaries
- Algae in some tributaries (with concern about nutrient levels in the tributaries)
- MCI levels (bugs and insects) in the lower Ngaruroro and Tutaekuri.

Information about the desired conditions for the Karamu River and its tributaries, and the Ahuriri, is still to be considered in detail.

Smaller working groups are helping to tackle the TANK Group's substantial workload. These are focused

on specific topics including storm water, wetland management and the economic implications of any management scenario considered by the Group.

Wider community engagement important, and the TANK Group ensures that it properly involves the various stakeholders and Māori in its decision-making process.

What it might mean for you

The TANK process will result in new planning rules for land and water within the TANK footprint. These rules will apply allocation limits and flow management criteria for rivers, which will also affect some groundwater users.

Water quality objectives will be set, including land use and discharge rules. New rules will affect how people use our rivers or groundwater and manage the land.

Catchment-based plan changes in each region of New Zealand will satisfy the government's National Policy Statement for Freshwater Management 2014.

Water Conservation Order

A Water Conservation Order application made for the Ngaruroro and Clive Rivers may affect the TANK process. The Regional Council and TANK Group stakeholders are working to ensure that the TANK process can continue.

How to get involved

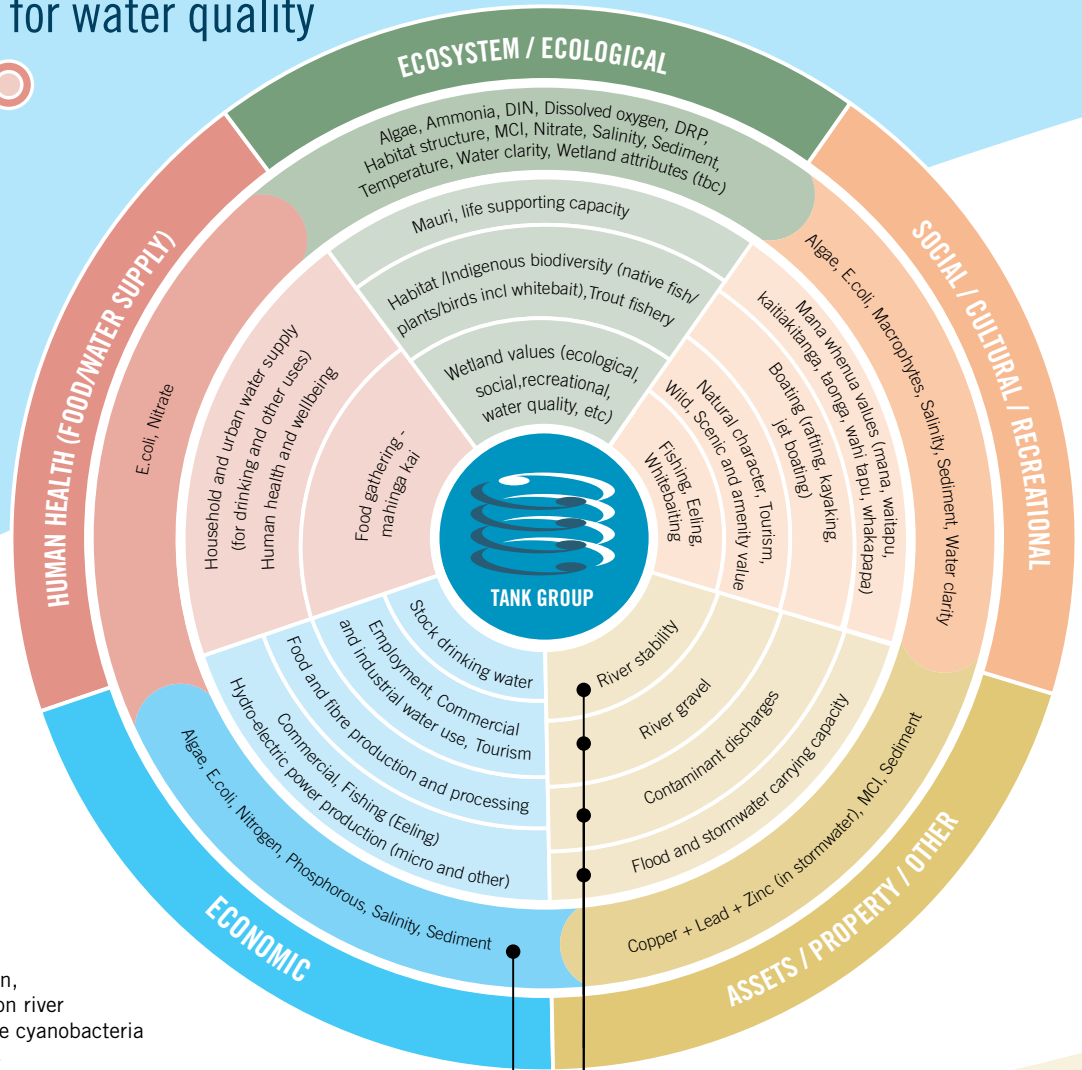
Talk to TANK Group members, or contact the organisations they represent: ask questions and give feedback. You can also do this online.

Or contact Hawke's Bay Regional Council staff, who are helping the TANK Group work through this process. Check HBRC website, Facebook or local papers.

Once the TANK Group has made its recommendations, HBRC will decide whether to publicly notify the plan change – or consult on a draft. You can also make a submission at that point.

See hbrc.govt.nz (search: #tank), or contact mary-anne.baker@hbrc.govt.nz.

TANK VALUES⁺ and Attributes for water quality



Attributes ○

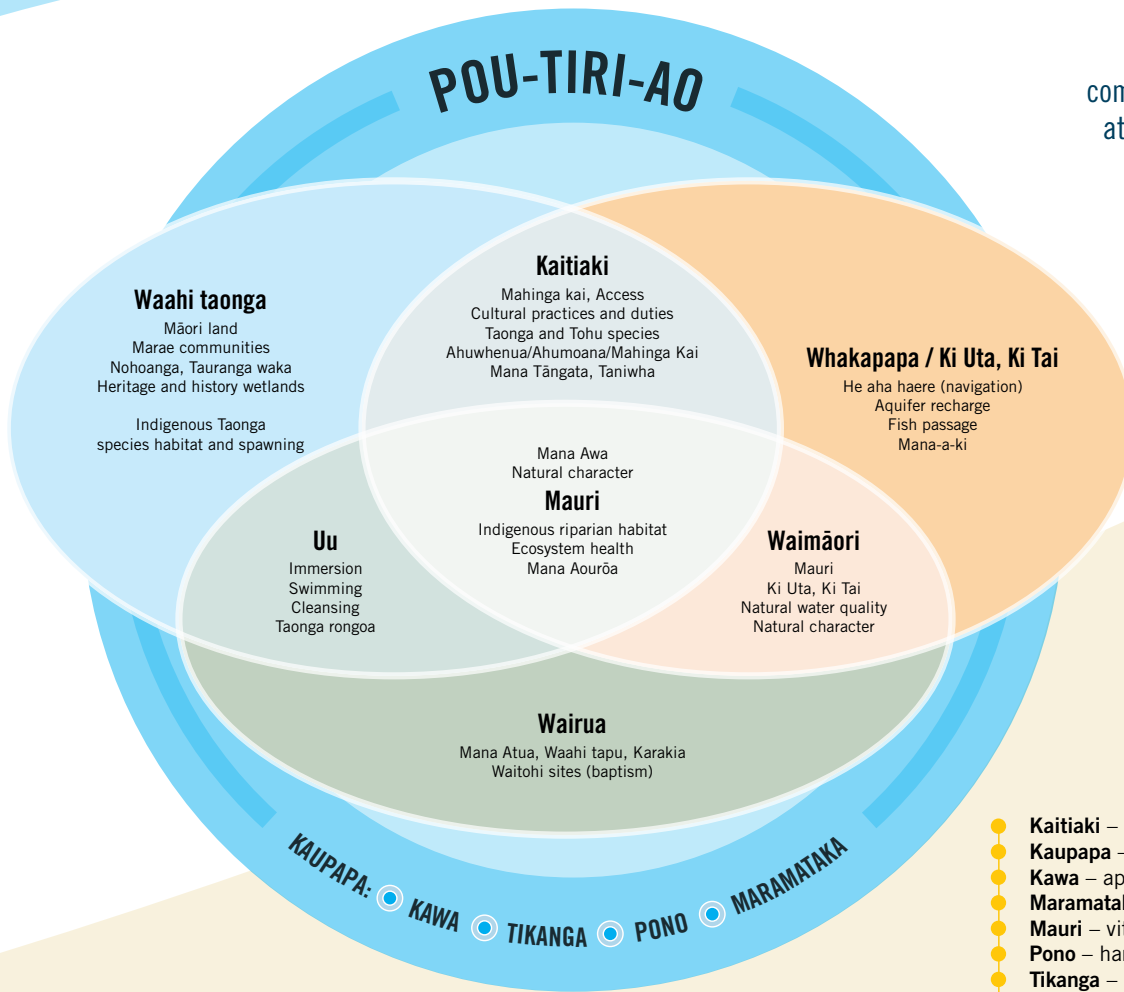
Values ●

- **Algae** - Includes periphyton, the algae found naturally on river beds, and phormidium, the cyanobacteria that can cause dog deaths
- **DIN** - Dissolved Inorganic Nitrogen
- **DRP** - Dissolved Reactive Phosphorus
- **Economic** - Recreational and water supply attributes are also relevant
- **MCI** - Macroinvertebrate index

TE AO MĀORI[†]

Tāngata whenua representatives of iwi and hapū in the TANK area have provided complementary values and attributes to characterise water quality.

These core values are underpinned by a philosophy of appropriate etiquette, customs, harmony and timing.



- **Kaitiaki** – guardian or custodian
- **Kaupapa** – philosophy
- **Kawa** – appropriate etiquette
- **Maramataka** – timing
- **Mauri** – vital essence of life
- **Pono** – harmony
- **Tikanga** – Māori customs
- **Uu** – values within water
- **Waahi taonga** – special or sacred places
- **Waimaori** – cultural view of rivers
- **Wairua** – spirit
- **Whakapapa/ Ki Uta, Ki Tai** – genealogy or lineage/mountains to the sea

[†] These two models are still being developed, but give a sense of the approach that the TANK Group and Māori are taking (November 2016).

TANK FACTS

- 85% of Hawke's Bay people live and work in the TANK footprint • 2 cities • 20 marae
- 87% of Hawke's Bay GDP (Gross Domestic Product) derived from the Napier/ Hastings City areas*
- 90% of Hawke's Bay horticulture and fruit is grown in the TANK footprint*
- 40% of Hawke's Bay sheep, beef, dairy and grain is farmed in the TANK footprint*
- 2,000 active consents to take water
- TANK footprint carries storm water from town/city runoff and industry

*Infometrics HB Economic Profile, 12 months to March 2015



TANK