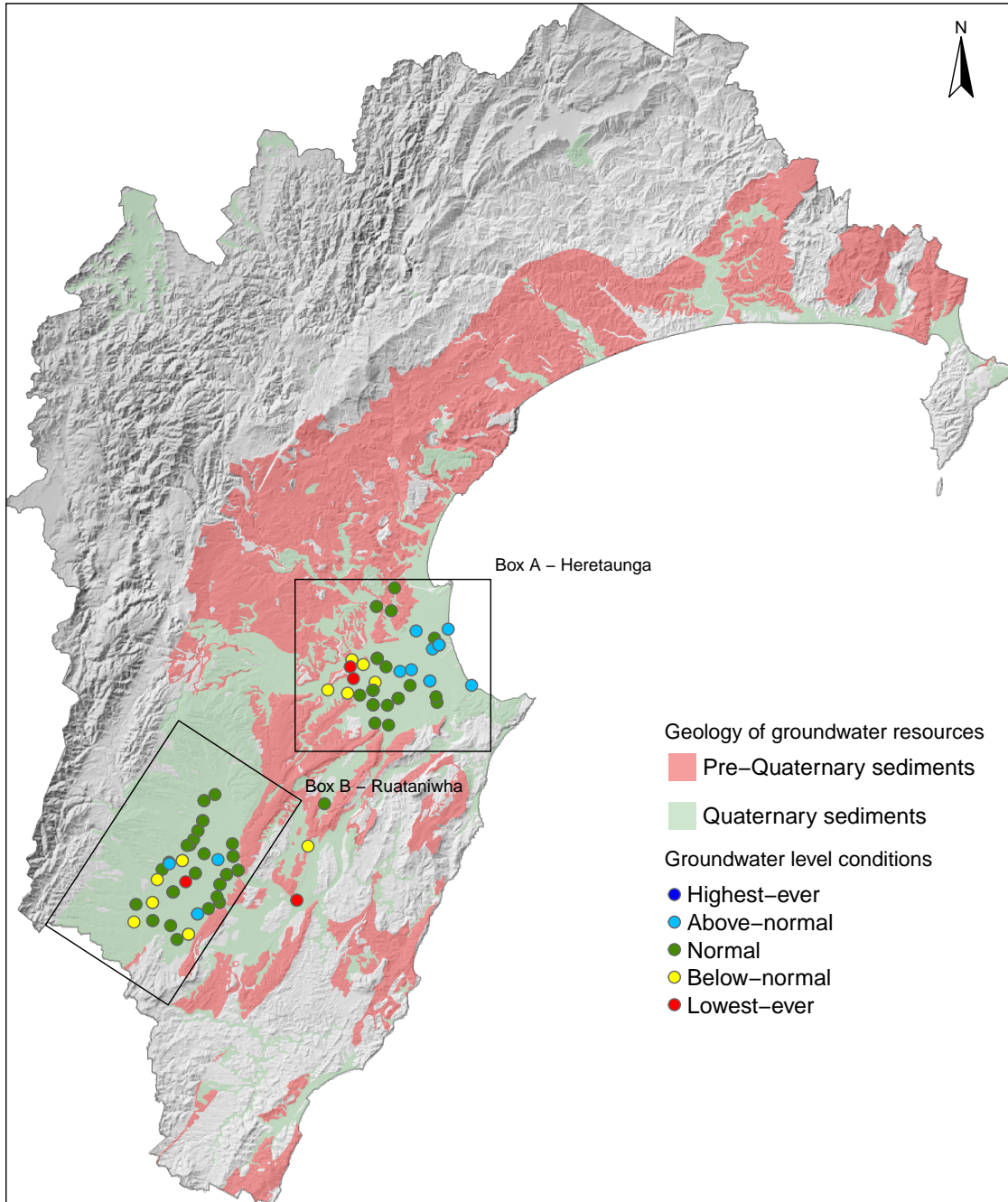
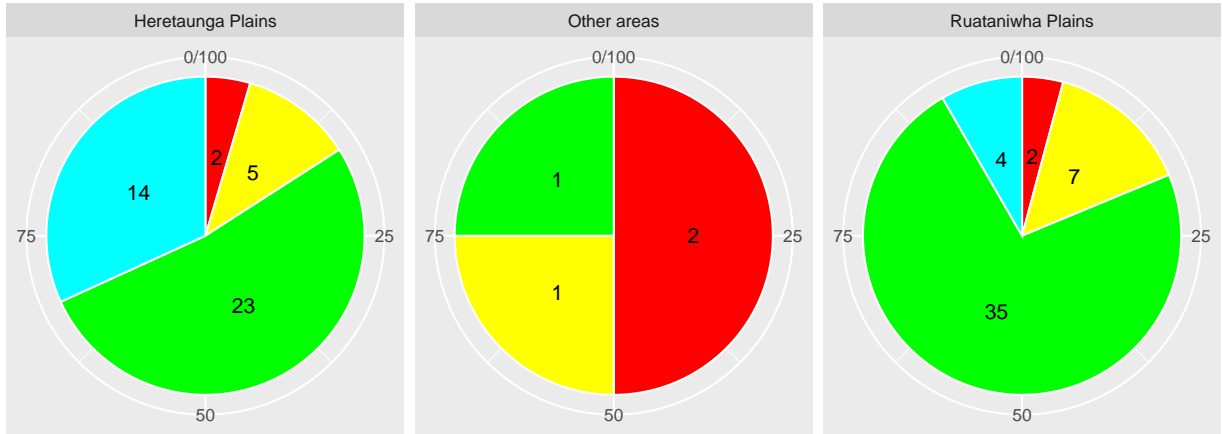


# January 2025 groundwater level conditions

This report compares groundwater levels measured in January with historic readings to evaluate current monthly conditions. To assess these conditions, we have grouped groundwater levels at each well relative to their monthly percentiles. Groundwater levels measuring between their monthly minimum and 25th percentile are considered below-normal, groundwater levels measuring between the 25th and 75th percentiles are classed as normal, and groundwater levels measuring between the 75th-maximum are considered above-normal. Wells with less than 5 years of record are excluded from the analysis.



The pie-plots below summarise the groundwater level conditions for the Hawke’s Bay region. For these plots the Hawke’s Bay region has been divided into two areas representing the Heretaunga Plains and Ruataniwha Plains. Each segment of the pie-plot represents a groundwater level condition with the size of the segment proportional to the quantity they represent. Each segment has been labeled to show the number of wells represented by that category. The average groundwater level condition in Hawke’s Bay for January 2025 is “Normal”.



■ Above-normal
 ■ Normal
 ■ Below-normal
 ■ Lowest-ever