

Air Quality Report

January 2025

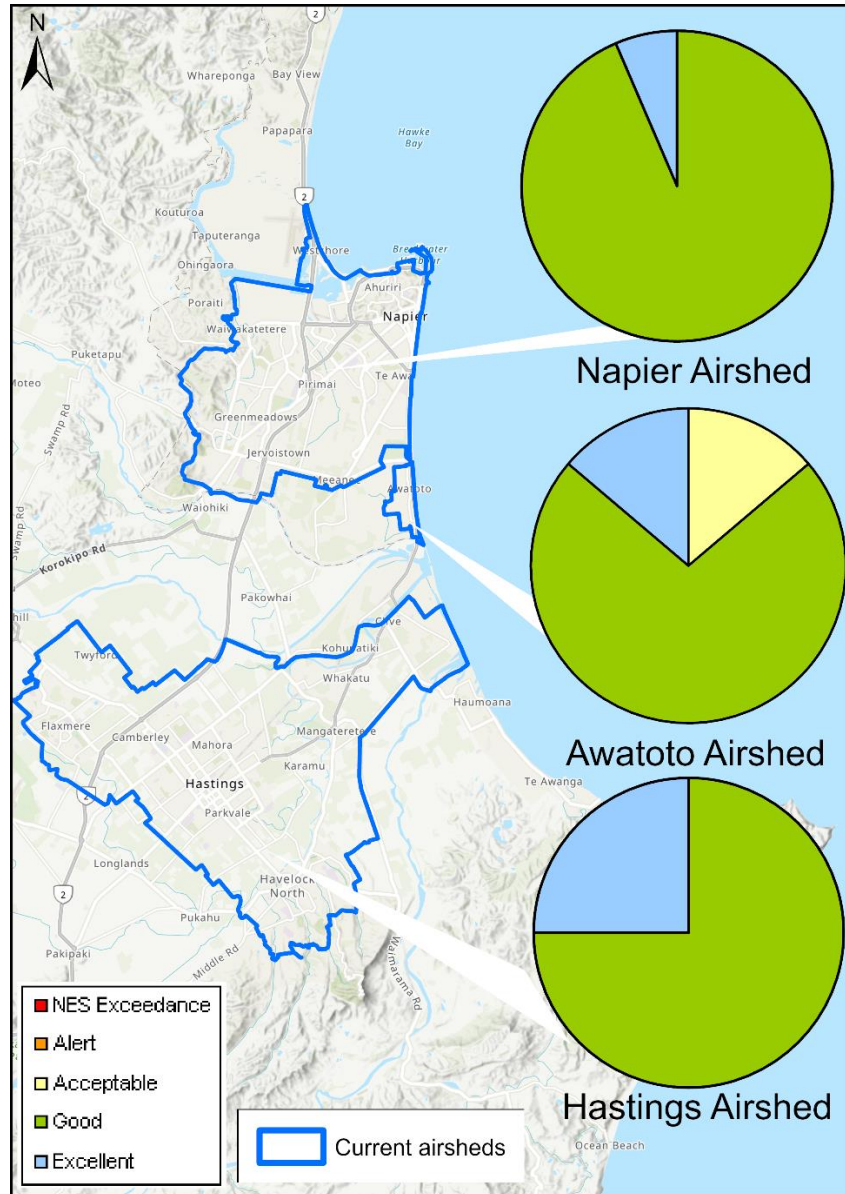


Figure 1: PM₁₀ levels in the Napier and Hastings airsheds during January 2025.

PM₁₀ exceedances:

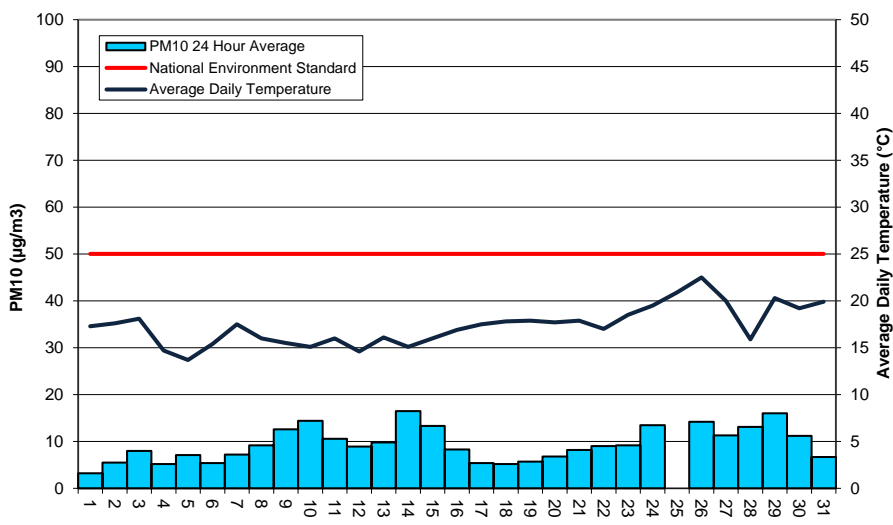
The National Environmental Standard (NES) for particulate matter (PM₁₀) of 50 micrograms per cubic metre (24 hour average) not exceeded in the Napier, Hastings or Awatoto airsheds during January 2025.

The monitoring sites are located at:

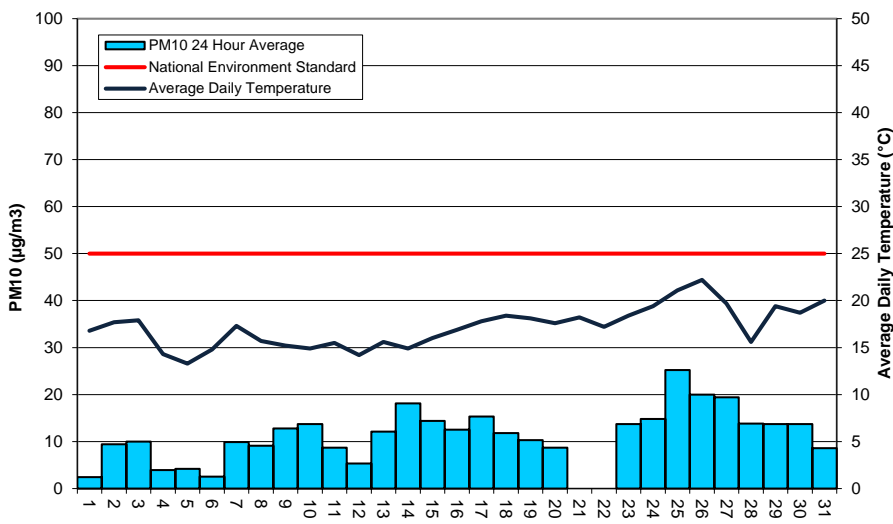
- Marewa Park in the Napier airshed.
- St Johns College in the Hastings airshed.
- Waitangi Road in the Awatoto airshed.

Further information is available at www.hbrc.govt.nz

Napier PM10 and average air temperature - January 2025



Awatoto PM10 and average air temperature - January 2025



Hastings PM10 and average air temperature - January 2025

