

Waiohiki Information Day

Category 2C

May 2024



TE KAUNIHERA Ā-ROHE O TE MATAU-A-MĀUI

The team



Harry Donnelly
Senior Project
Manager



Mell Anderson
Project Manager



Te Kaha Hawaikirangi
Kaihautū Pūtaiao –
Mātauranga Māori



Sarah Cameron
Communications
and Engagement
Team Lead



Sam Potts
Communications
Advisor

What we'll cover

- 1) What we've been working on
- 2) Stopbank design
- 3) Enabling works
- 4) Timeframes

Please leave pātai until the end of the presentation.

We will also be around after to discuss more in detail.



What we've been working on

- Design of the Stopbank
- Design of the realignment of Upokohina Stream
- Cultural Impact Assessment (CIA)
- Site Investigations
 - Ecology Assessments (information on vegetation, stream)
 - Geotechnical Assessments (condition and stability of)
 - Surveying
 - Land Contamination Testing
- Land agreements
- Finding suitable material for construction
- Identify areas for material storage
- Consenting needs
- Securing funding (business case)

DRAFT

LEGEND

- Stopbank
- Omarunui Stopbank
- Maintenance Track
- Cycle Trail
- Original Upokohina Stream
- Redirected Upokohina Stream
- Culvert with headwall and flapgate
- Proposed swale
- Proposed regrading

Culvert 1 (assumed to be 600 dia RCRJ or similar), to be confirmed at detailed design. PE Flapgate on outlet. Rip rap apron below outlet discharge to Tutaekuri

Swale 1- To convey overland flowpath to culvert 1. Comprising 0.6m deep swale with limestone rip rap protection. Details TBC

Culvert 2 outlet into Upokohina stream with outlet rip rap erosion protection apron.

Swale 2- To convey overland flowpath to culvert 2. Comprising 0.6m deep swale with limestone rip rap protection. Details TBC

Locally deconstruct end of Omarunui stopbank if required.

Culvert 2 (assumed to be 600 dia RCRJ or similar), to be confirmed at detailed design. PE Flap gate on outlet

Stream realignment, details and planting requirements TBC

Existing stream course to be backfill (subject to ecology review). Ground levels shaped towards Culvert 2

Tie into high ground on golf course. Specific location TBC at detailed design.

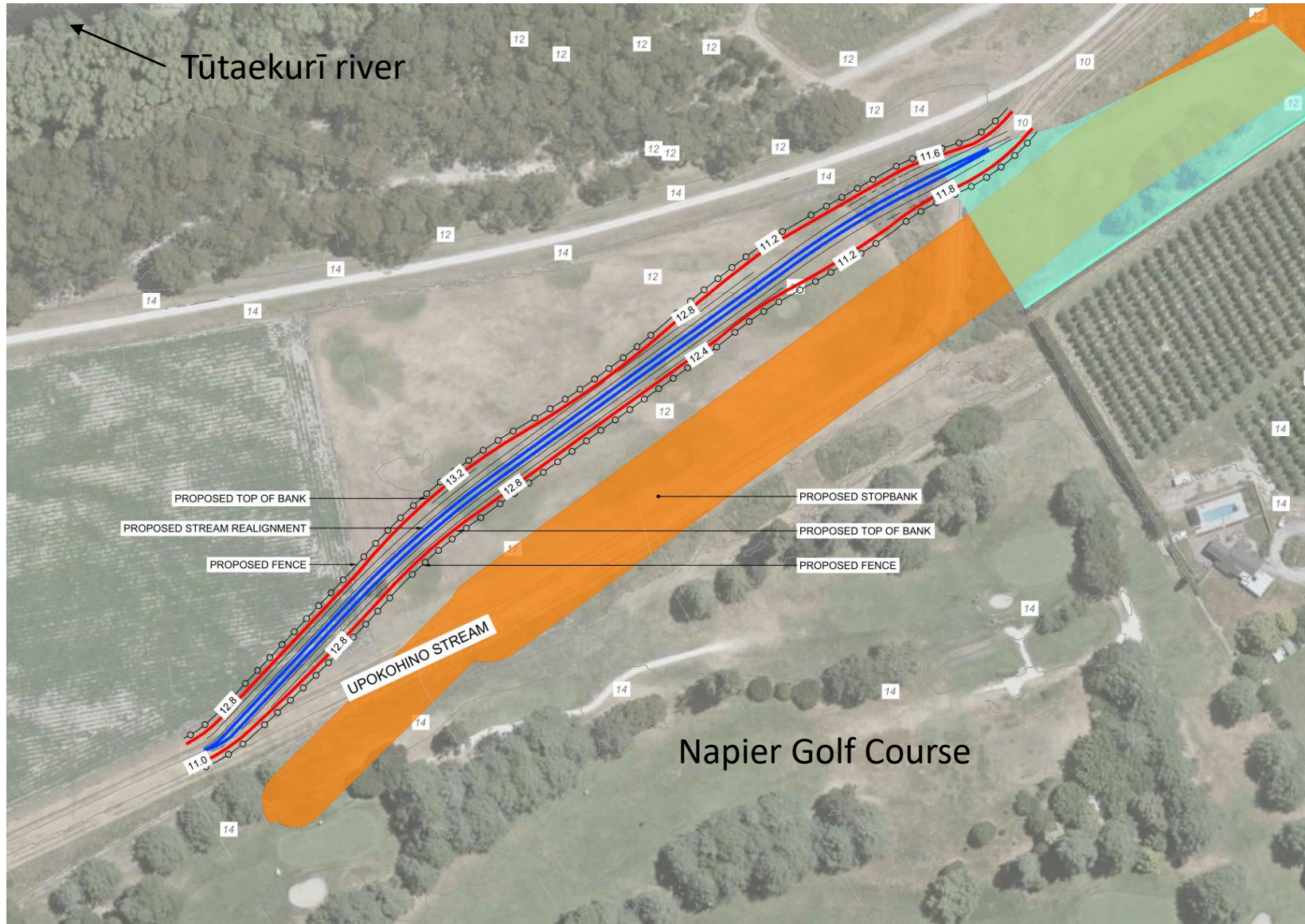
Stopbank

- 1090m from Redclyffe Bridge to Napier Golf Course
- Diversion of the Upokohina Stream
- Removal of vegetation by the Redclyffe Bridge

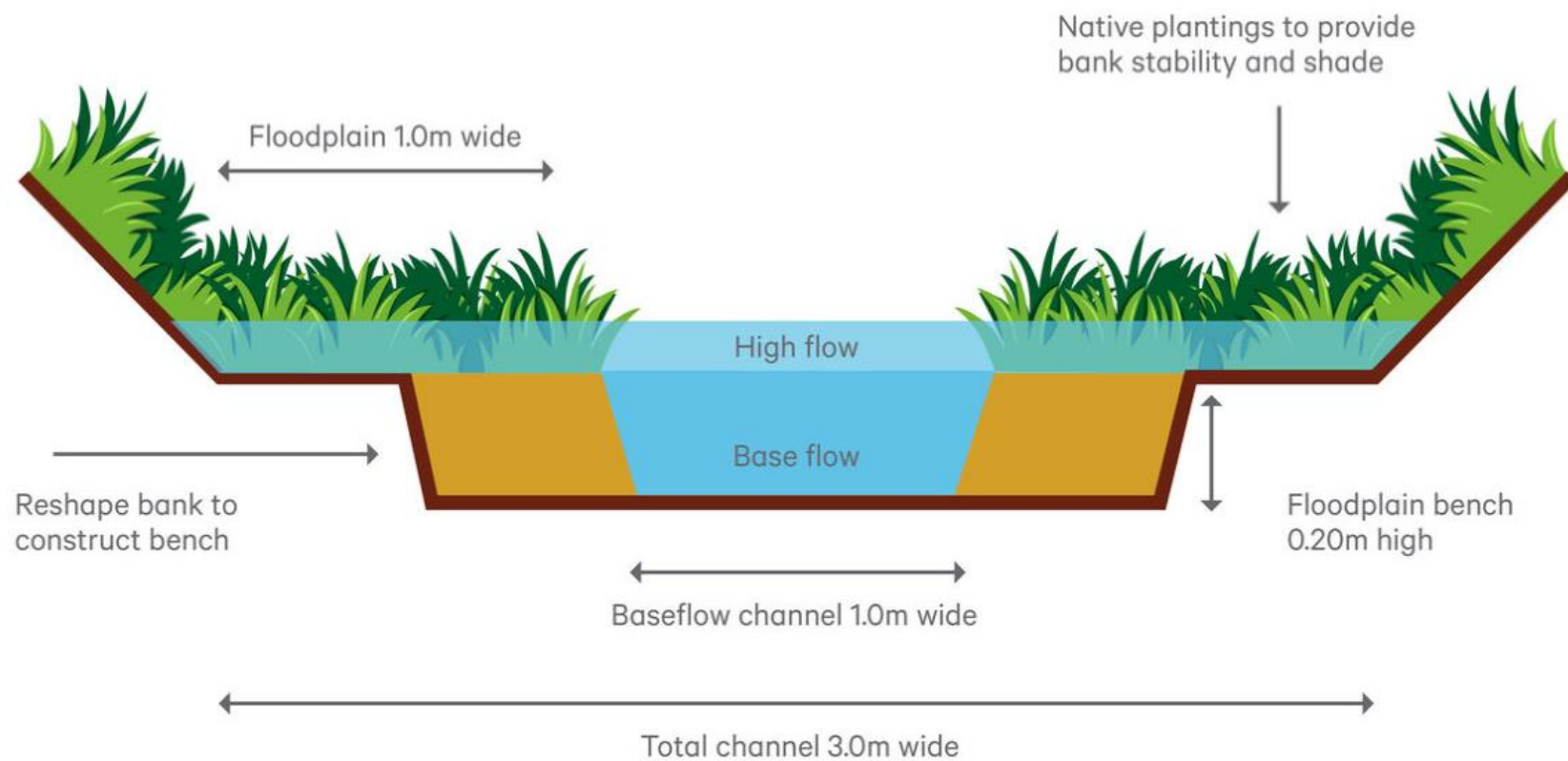


TE KAUNIHERA Ā-ROHE O TE MATAU-A-MĀUI

Stream diversion



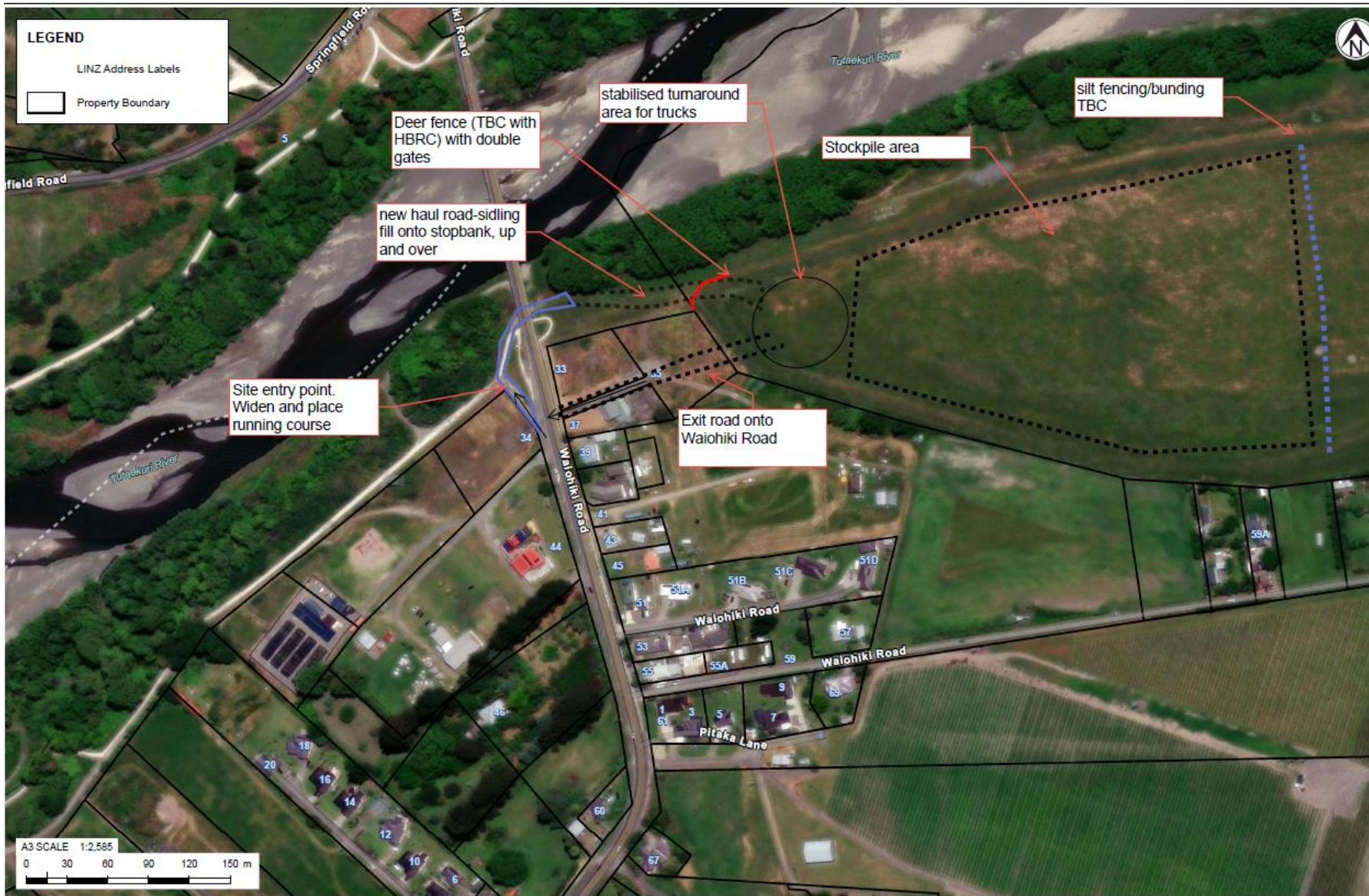
Stream cross-section



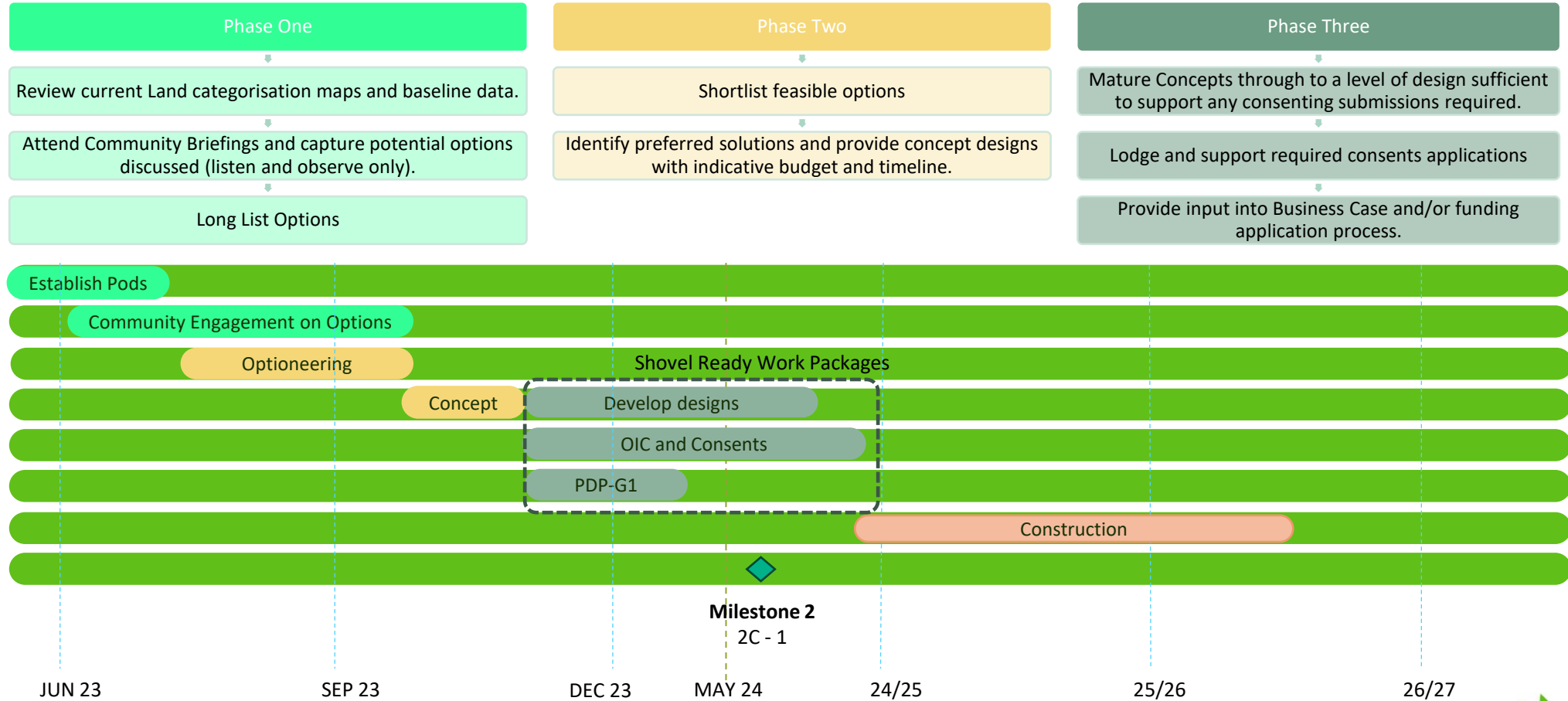
Material storage area

What we are working on

- Engagement with Hapū
- Lease agreements
- Design and planning
- Consenting
- Material storage
- Safety and mitigations
- Impacts to the community and working with Hapū



Timeline



Milestones:

1 - Move from Category 2C to 1

Trigger 1: Funding Pathway- Business Case approved by TSY, Trigger 2: Confidence in specific solution to deliver 1% AEP, Trigger 3: Interest in any land required for infrastructure and/or access for operations and maintenance.

2 – Move to construction

Next steps



Detailed design of the Stopbank

Detailed design of the stream

- including reducing any potential impacts



Continue collaboration with mana whenua

- planning for native planting
- ecological feedback and guidance
- recommendations of the Cultural Impact Assessment (CIA)



Consent with Hastings District Council for earthmoving



Contractor engaged and material storage area to be prepared

Keep updated

Waiohiki information hub

Visit HBRC's website and search #Waiohiki or look in the 'Projects'

You'll find:

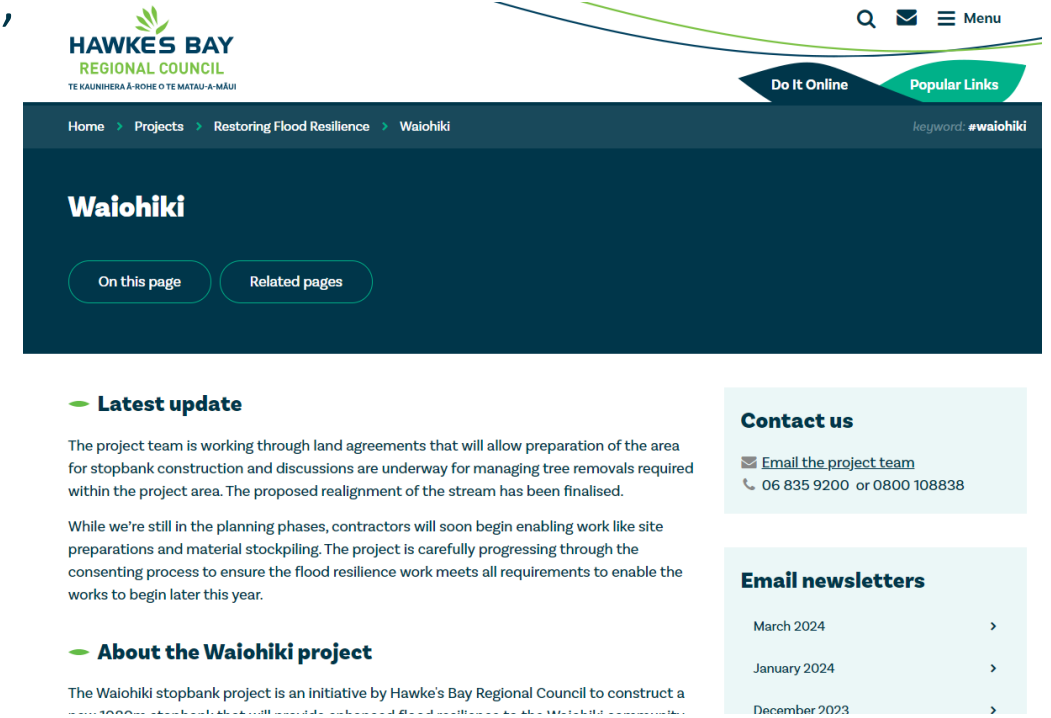
- Latest updates
- Project team and contact information
- Current and previous newsletters
- Project timelines

Questions or help?



Email: project.enquiries@hbrc.govt.nz

Online form: <https://hbrc.info/irpform>





Pātai?

Questions