

## Tree Planting on Boundaries - a guide

### Introduction

The distance trees can be planted from boundaries often causes confusion for land users as these measurements vary depending on the local District Council regulations. Since the first guide was issued in May 1995, most District Council plans have been changed, with reduced boundary distances.

Following is an outline of the requirements for five of the districts in the Hawkes Bay Regional Council's area. In many cases planting may be closer to boundaries with the written permission of the neighbouring owner/occupier. Napier City Council is not included as most of its land use is urban.

Please check with the appropriate Council prior to any boundary planting to ensure the information in this Environment Topic is still correct.

### Wairoa District Council

- No vegetation shall be planted or allowed to be grown in a position which will restrict the driver's safe sight distance to or from any road intersection or any private access intersection with arterial roads, or restrict the driver's view of "official signs".
- No tree, tree plantation, or shelter belt shall be planted within 20m of the edge of the carriageway of any primary arterial road. By definition, arterial roads in the Wairoa District are SH2 and SH38.

### Hastings District Council

#### Plains Zone

Trees forming a plantation or shelter belt for more than 20m:

- Shall be planted a minimum distance of 5m from an adjoining property boundary and be maintained so that branches do not extend over the boundary.
- Where planted between 5m and 10m from an adjoining property boundary shall be maintained at a height of no more than their distance from the boundary + 4m (e.g. at a distance of 5m from the boundary, the height limit is 9m; at a distance of 9m from the boundary, the height limit is 13m).

### Rural Zone

Trees forming a plantation or shelter belt for more than 20 metres shall be located a minimum of 10 metres from an adjoining property boundary.

### Central Hawkes Bay District Council

#### Setback from Neighboring Properties

- No tree planting, except for amenity tree planting, shall be located on, or within 10 metres of the boundary of any property under a separate certificate of title unless prior written permission has been obtained from the affected landowner.
- A copy of the written permission shall be forwarded to the Council and will be registered on the land information property records. (Note: Where written permission is not obtained within this zone tree planting shall be a discretionary activity with respect to this matter).

#### Setback from Roads

- No tree planting shall be positioned such that when the trees grow they will shade a public road between the hours of 10am and 2pm on the shortest day of the year.

#### Setback from residential units

- No tree planting shall be positioned such that when the trees grow they will shade a residential unit on a neighbouring property between the hours of 9am and 4pm on the shortest day of the year.

#### Interference with structures

- No trees shall be planted in such a position that when the trees grow they interfere with overhead or underground utilities or transmission corridors.

#### Setback from stopbanks

- No tree shall be planted within 6 metres of a flood protection stopbank.

### Rangitikei District Council

#### Planting Setback

- No vegetation shall be permitted to grow higher than 5 metres from the ground level within 10 metres of the boundary of any site contained in a separate Certificate of Title (including a road) without the prior written permission of the land-owners of that adjoining site, that permission having been contemporaneously filed with Council.

- In addition, no vegetation shall be planted or allowed to grow in a position which will shade any carriage-way between the hours of 10am and 2pm on the shortest day of the year and where topography is not already preventing direct access of sunlight onto the carriage-way without the prior permission of the relevant roading authority, that permission having been contemporaneously filed with Council.

### Taupo District Council

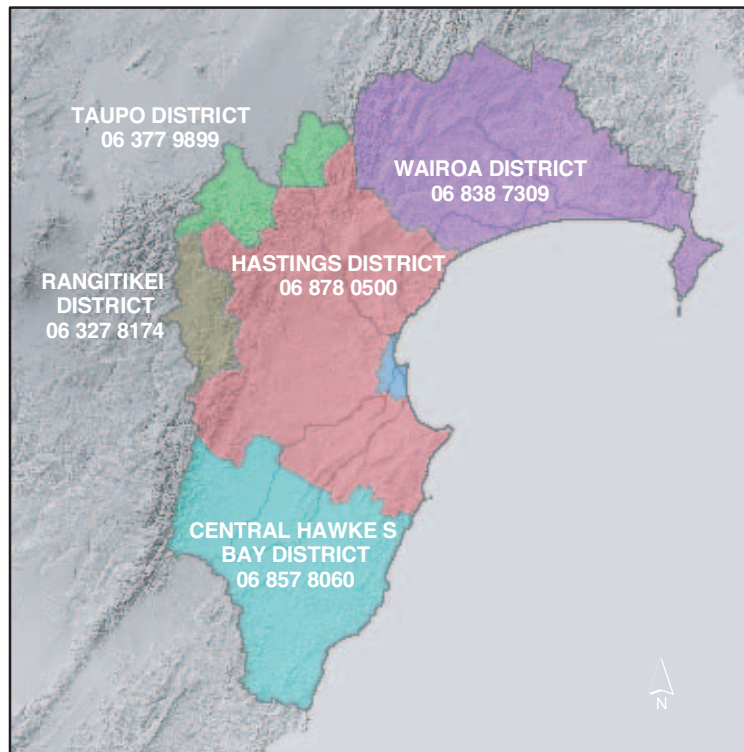
Planted Tree Vegetation (including Plantation Forestry)

- Trees shall not be planted or allowed to grow in a position which will shade any road carriageway, (with the exception of private roads), between the hours

of 10am and 2pm on the shortest day of the year and where topography is not already preventing the direct access of sunlight onto the road.

- 10m setback from any adjoining allotments under different ownership (except where the adjacent land use is directly compatible with the planted tree vegetation i.e. plantation forestry in P.radiata versus plantation forestry in P.radiata..)
- 25m setback from an existing house on an adjoining allotment.
- 10m setback from any Residential Environment Boundary.

For clarification of these requirements contact the relevant District Council:



#### **For Further Information**

For further information contact Hawke's Bay Regional Council Land Management staff for advice.

Wairoa	06-838 8527
Napier	06-835 9200
Waipukurau	06-858 8636
TOLL FREE	0800 108 838
Website.	<a href="http://www.hbrc.govt.nz">www.hbrc.govt.nz</a>