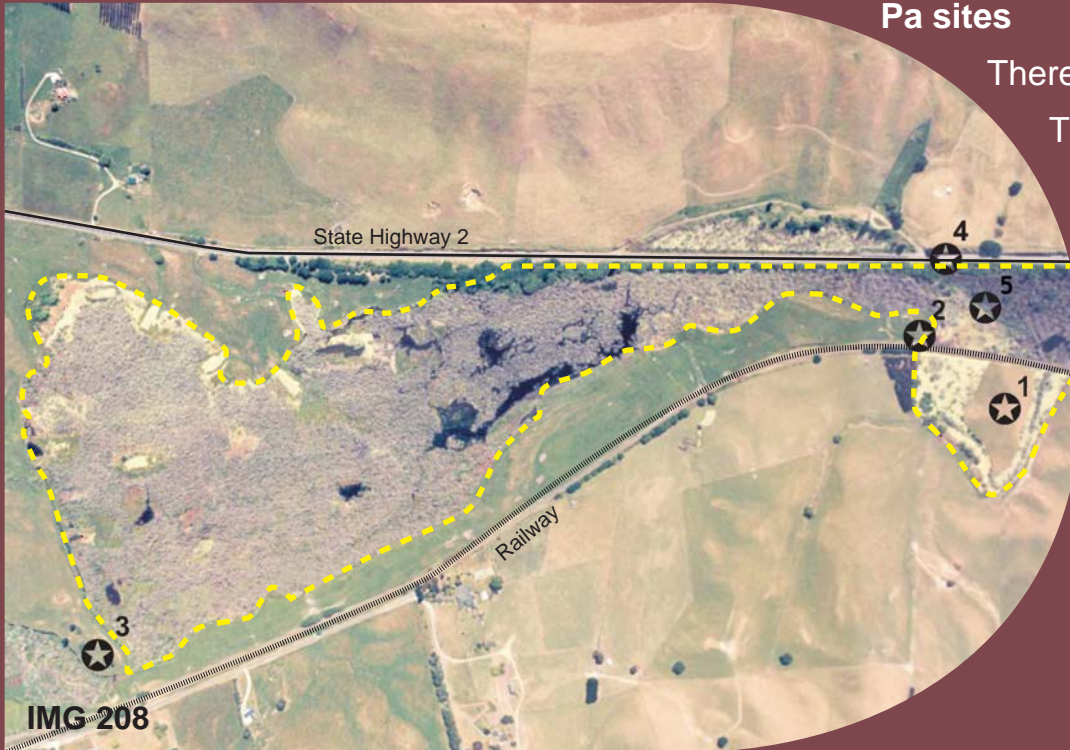
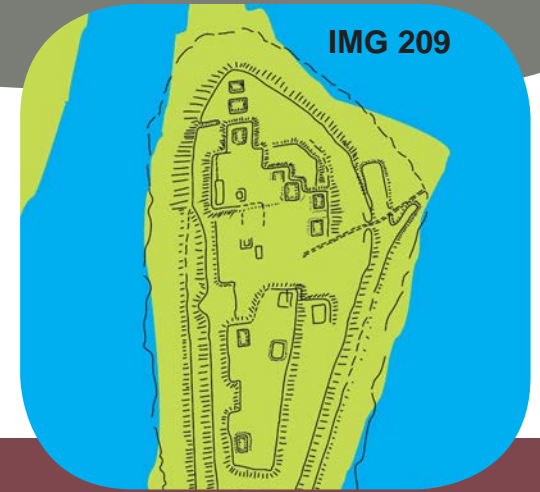


# HISTORY

## Māori History

204

Pekapeka holds strong cultural and spiritual significance for Māori. Pekapeka was an important hunting and fishing ground for local Māori, as it was a major source of tuna (eels) and bird life. Three pa sites are immediately adjacent to the Pekapeka wetland and were used for tuna catching, processing and barter. There are other pa sites in the surrounding hills.



### Pa sites

There are several archeological sites adjacent to the swamp.

Three pa sites, which were once fishing camps, used the wetland as part of their defences:

- 1 Island Pa
- 2 Waireporepo Pa (probably part of 'Island Pa', before the railway line was built).
- 3 Tikiwhata Pa (a major eel fishing site)
- 4 The Tapu Stone
- 5 Car park & Interpretation Site



Tribes dating from 1530-1670AD used a canoe path from Pakipaki to Lake Poukawa