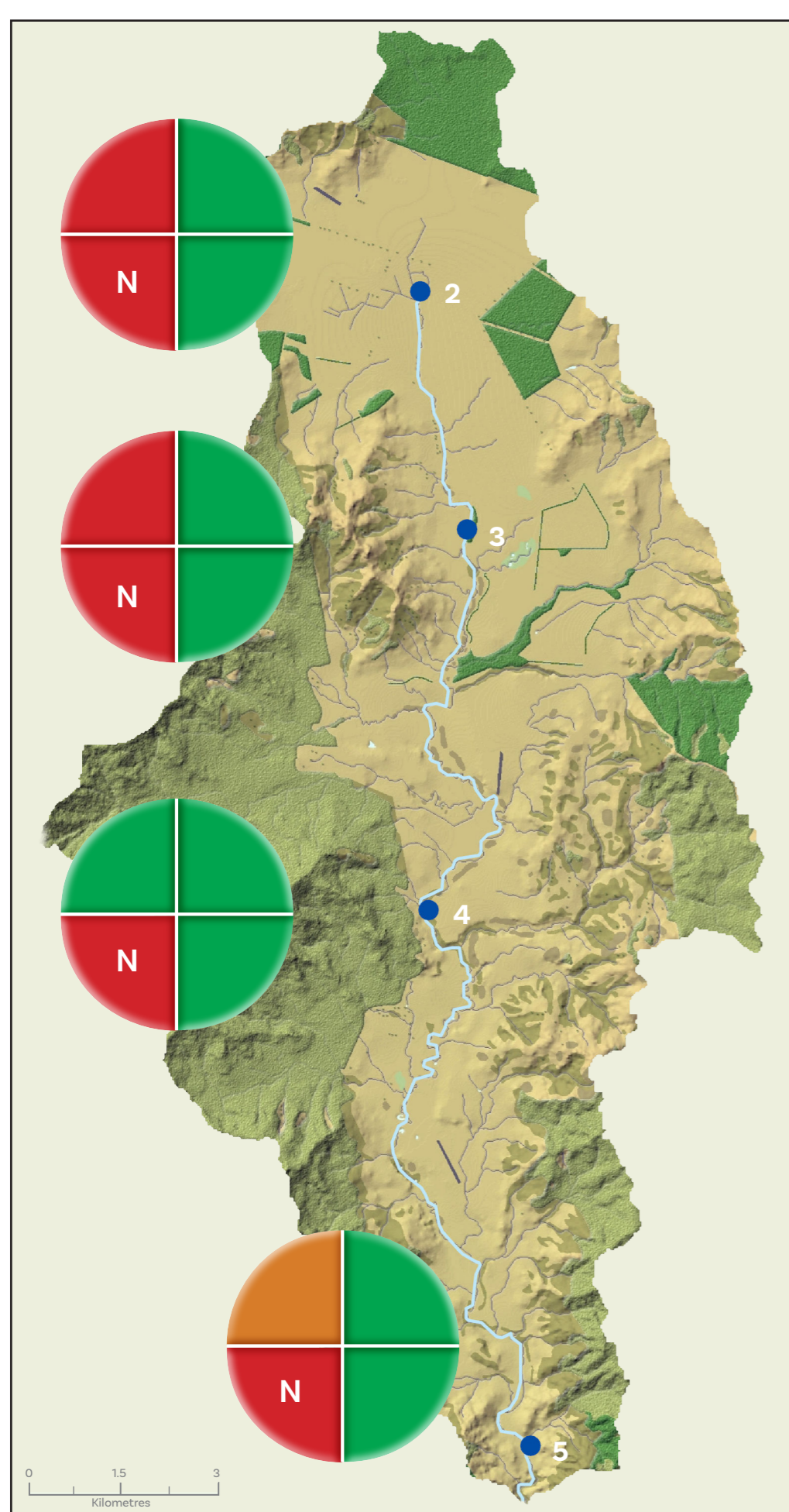




Mohaka Catchment

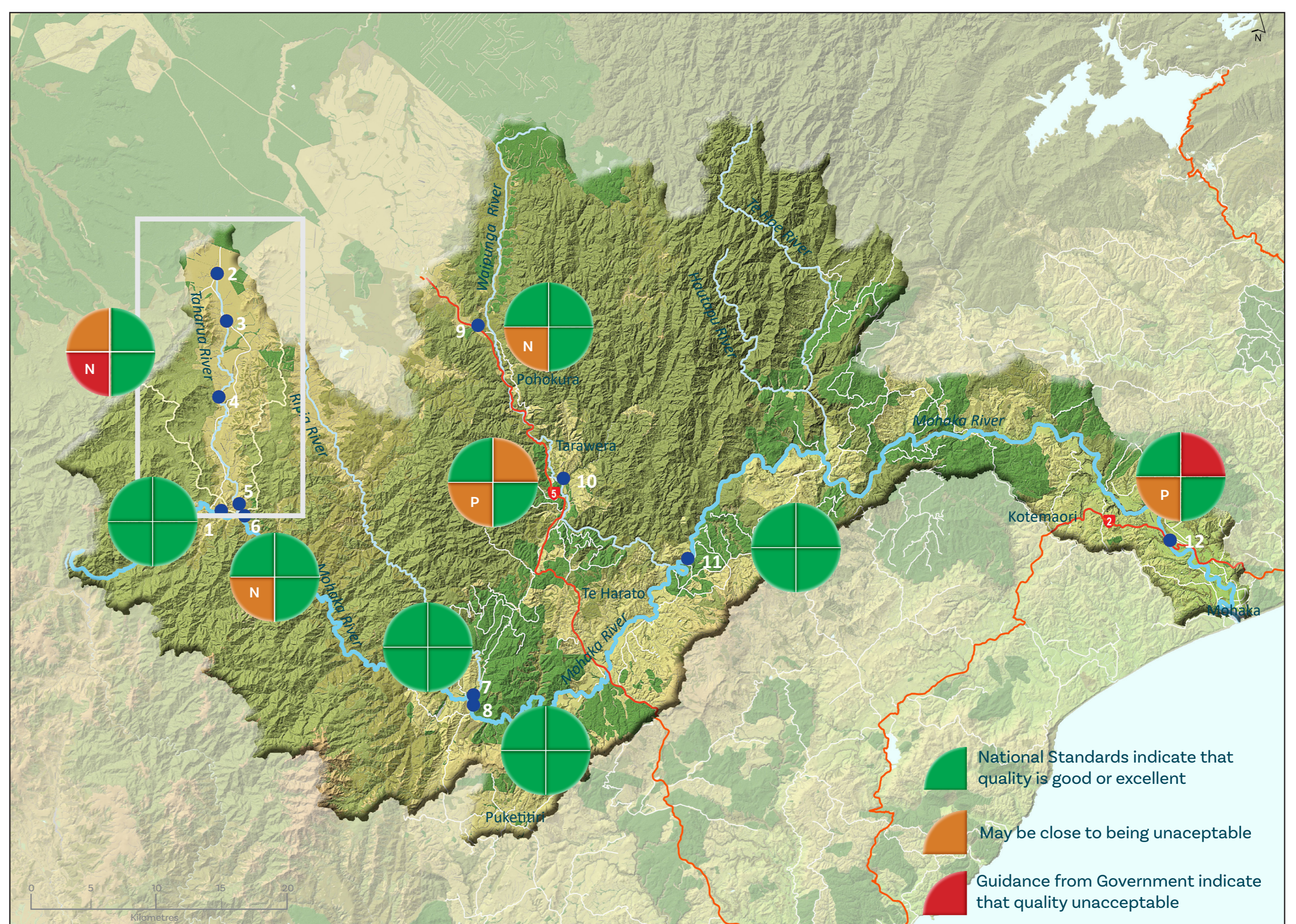
River Water Quality

We monitor around the Mohaka catchment, and these results are what we normally find. Does this fit with what you're seeing in the awa?



Taharua Catchment

2. Taharua River @ Wairango Rd., 3. Taharua River @ Wrights' Twin Culverts, 4. Taharua River @ Henry's Br., 5. Taharua River @ Red Hut.



Mohaka Catchment

1. Mohaka River U/S Taharua, 2,3,4,5. Taharua River, 6. Mohaka River D/S Taharua River, 7. Ripia U/S Mohaka River, 8. Mohaka River D/S Ripia River, 9. Waiarua River at S.H.5, 10. Mokomokonui Stream U/S Waipunga River, 11. Mohaka River D.S Waipunga River, 12. Mohaka at Raupunga River.

The map is a summary of key indicators of water quality:

Freshwater life

We monitor water quality and habitat for how well it can support life such as invertebrates, fish, and birds looking at macroinvertebrates and eco-toxicity

Nutrients

We monitor particular forms of nitrogen (N) and phosphorus (P) to understand the risk of nuisance growth of plants and algae

Human pathogens

We monitor for E. coli which is a common gut bacteria and a useful indicator of the risk of illness from pathogenic infection for humans

Sediment

We look at how clear the water is to identify the impact of erosion

