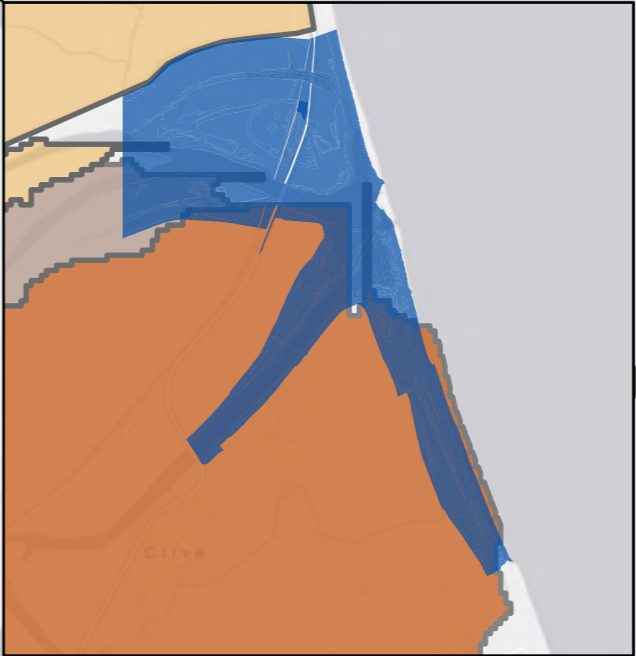
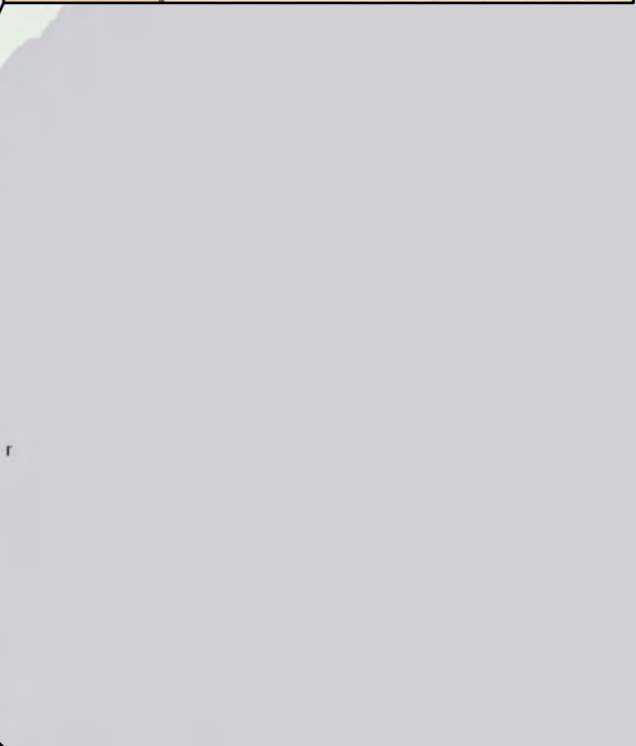
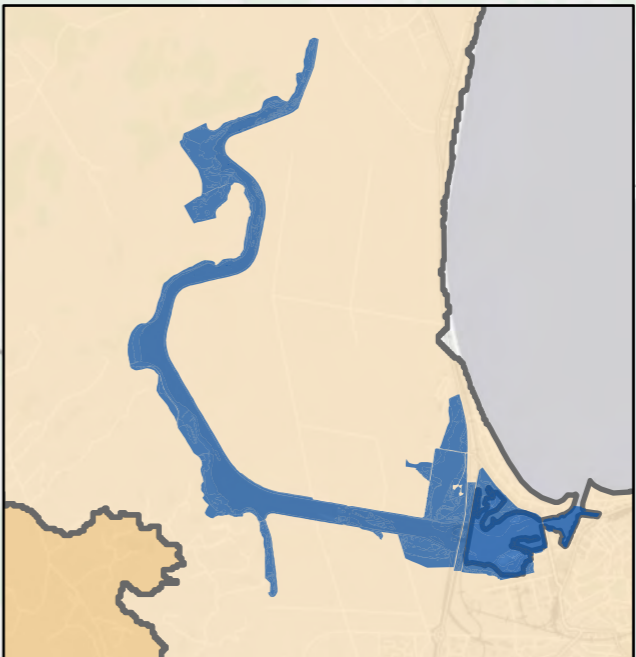
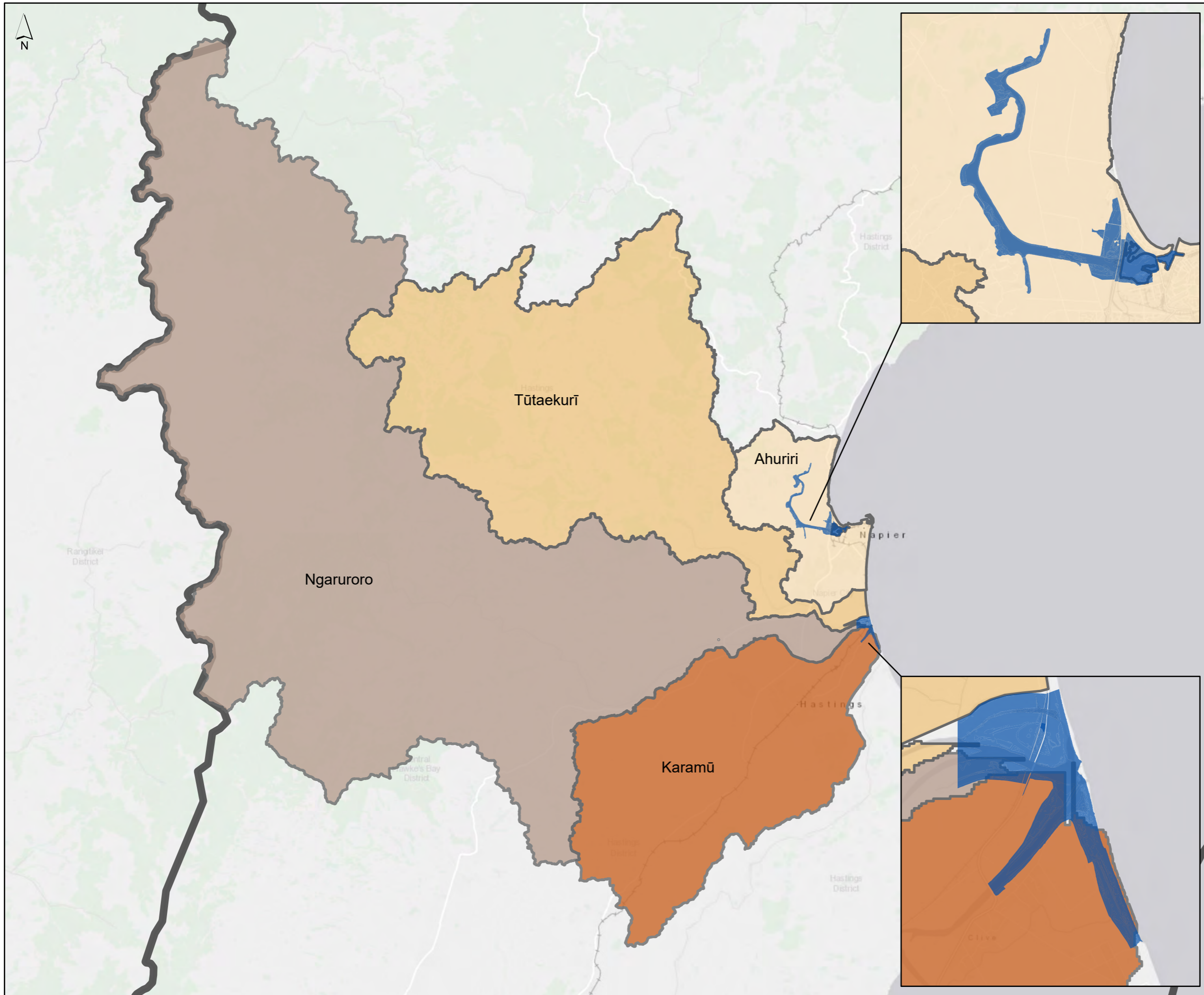


## Appendix 6 – Planning Maps



**TANK**  
*Tūtaekurī, Ahuriri, Ngaruroro, Karamū*  
**Proposed Plan Change 9**

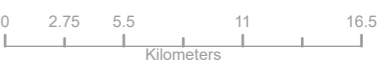
Schedule 26

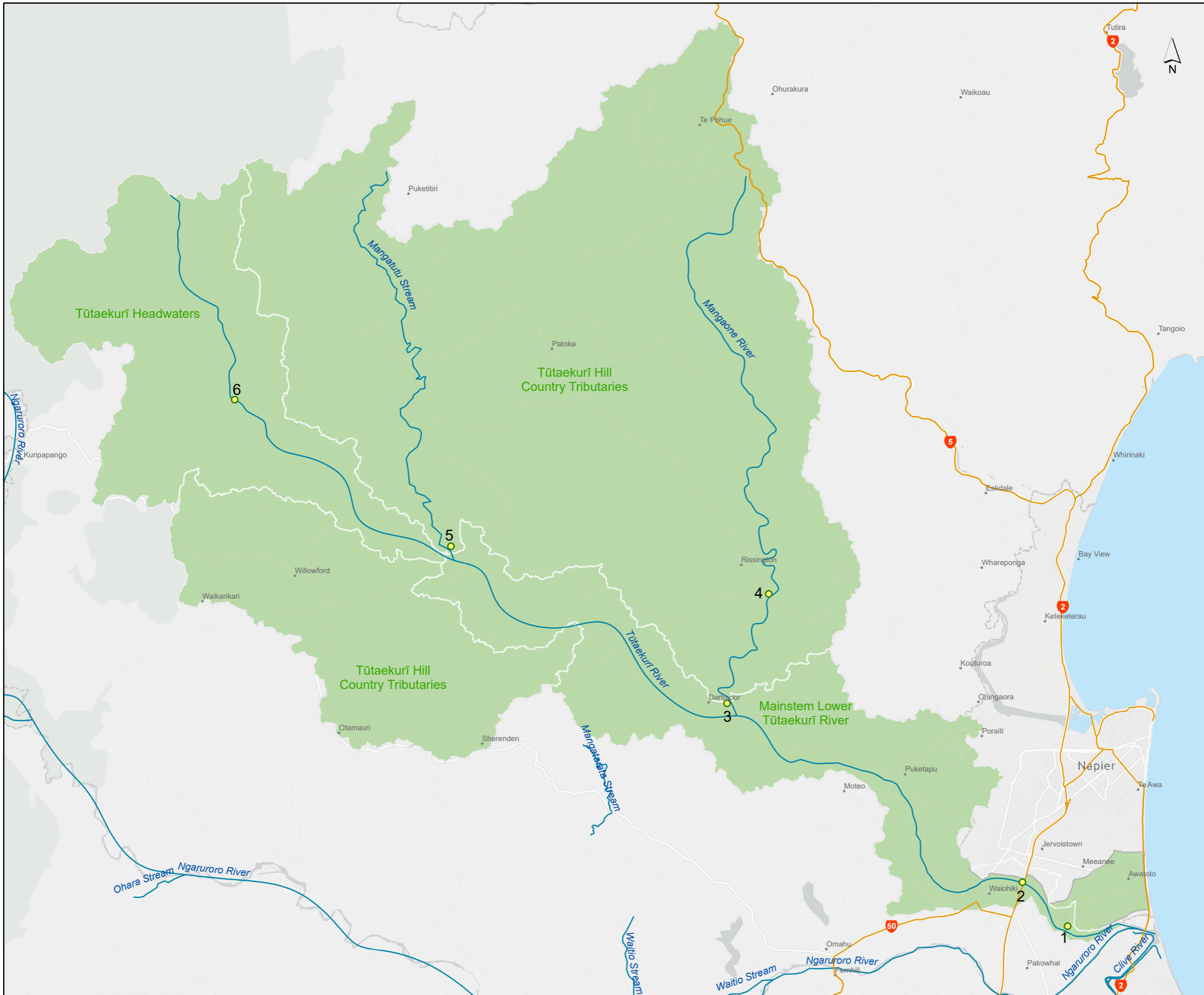
MAP INDEX

- Catchments
- Tūtaekurī (Map 1)
  - Ahuriri (Map 2)
  - Ngaruroro (Map 3)
  - Karamū (Map 4)
  - Estuary (Map 5)



DATA FROM: Land Use information obtained from the Hawke's Bay Regional Council's Geographic Information Systems Database.  
 LIMITATIONS AND COPYRIGHT  
 This map may not be reproduced or transmitted to any other party, in any form or by any means, electronic, mechanical, photocopying, recording or otherwise, without the written permission of the copyright holder.  
 DISCLAIMER  
 The Hawke's Bay Regional Council cannot guarantee that the data shown on this map is 100% accurate.





**TANK**  
*Tūtaekurī, Ahuriri, Ngaruroro, Karamu*  
**Proposed Plan Change 9**

**Schedule 26  
 Map 1**

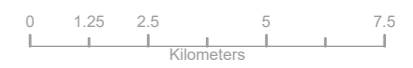
**Tūtaekurī Surface Water  
 Quality Area  
 QUALITY**

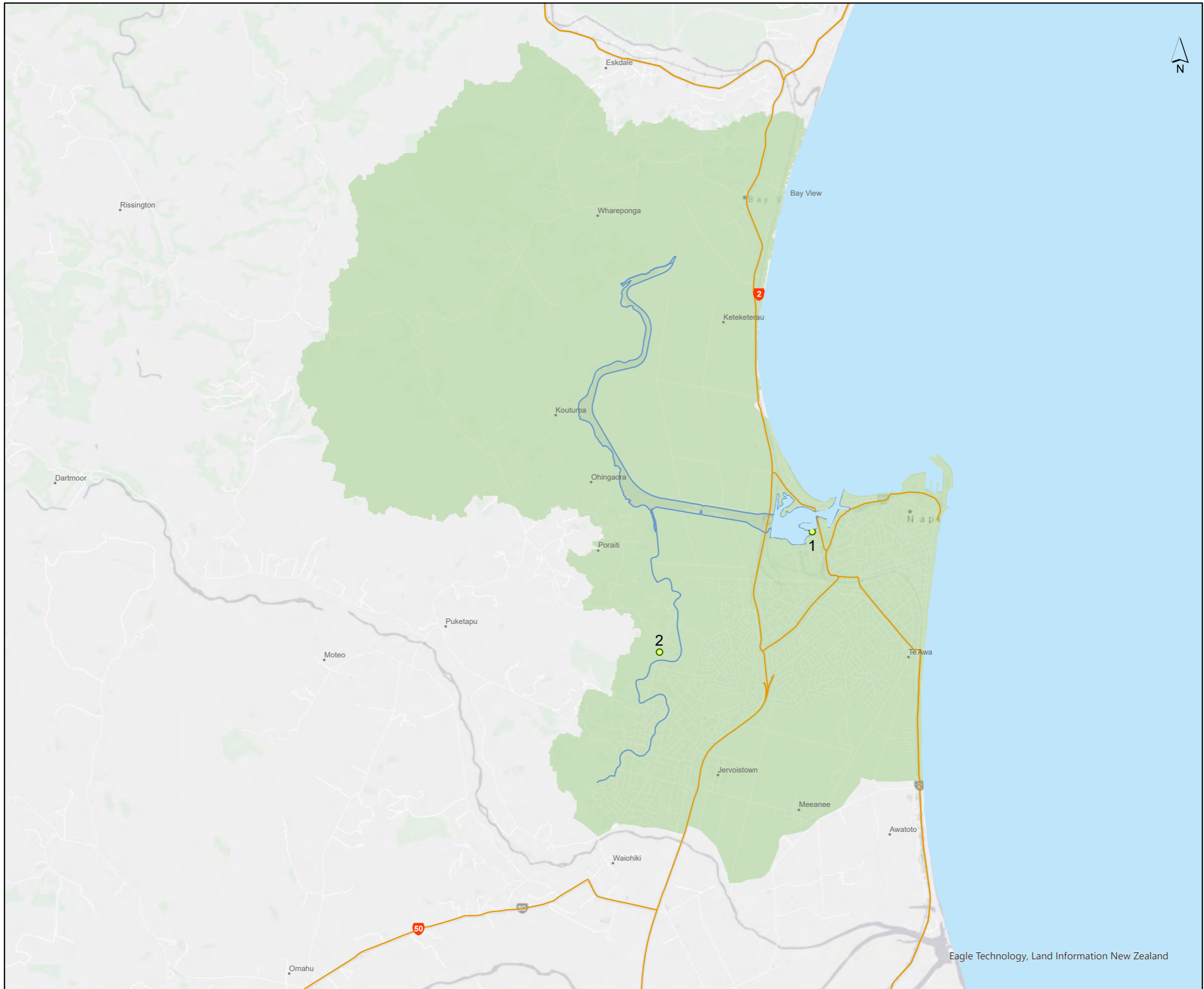
- Tūtaekurī Surface Water Quality Area
- Monitoring Points

- 1 - Tūtaekurī River at Brookfields Br
- 2 - Tūtaekurī River (Primary Rec)
- 3 - Tūtaekurī River US Mangaone
- 4 - Mangaone River
- 5 - Mangatutu Stream
- 6 - Tūtaekurī River at Lawrence Hut



DATA FROM: Land Use information obtained from the Hawke's Bay Regional Council's Geographic Information Systems Database.  
 LIMITATIONS AND COPYRIGHT  
 This map may not be reproduced or transmitted to any other party, in any form or by any means, electronic, mechanical, photocopying, recording or otherwise, without the written permission of the copyright holder.  
 DISCLAIMER  
 The Hawke's Bay Regional Council cannot guarantee that the data shown on this map is 100% accurate.





**TANK**

*Tūtaekurī, Ahuriri, Ngaruroro, Karamū*

**Proposed Plan Change 9**

**Schedule 26  
Map 2**

**Ahuriri Surface Water  
Quality Area**

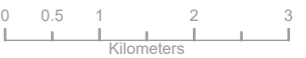
**QUALITY**

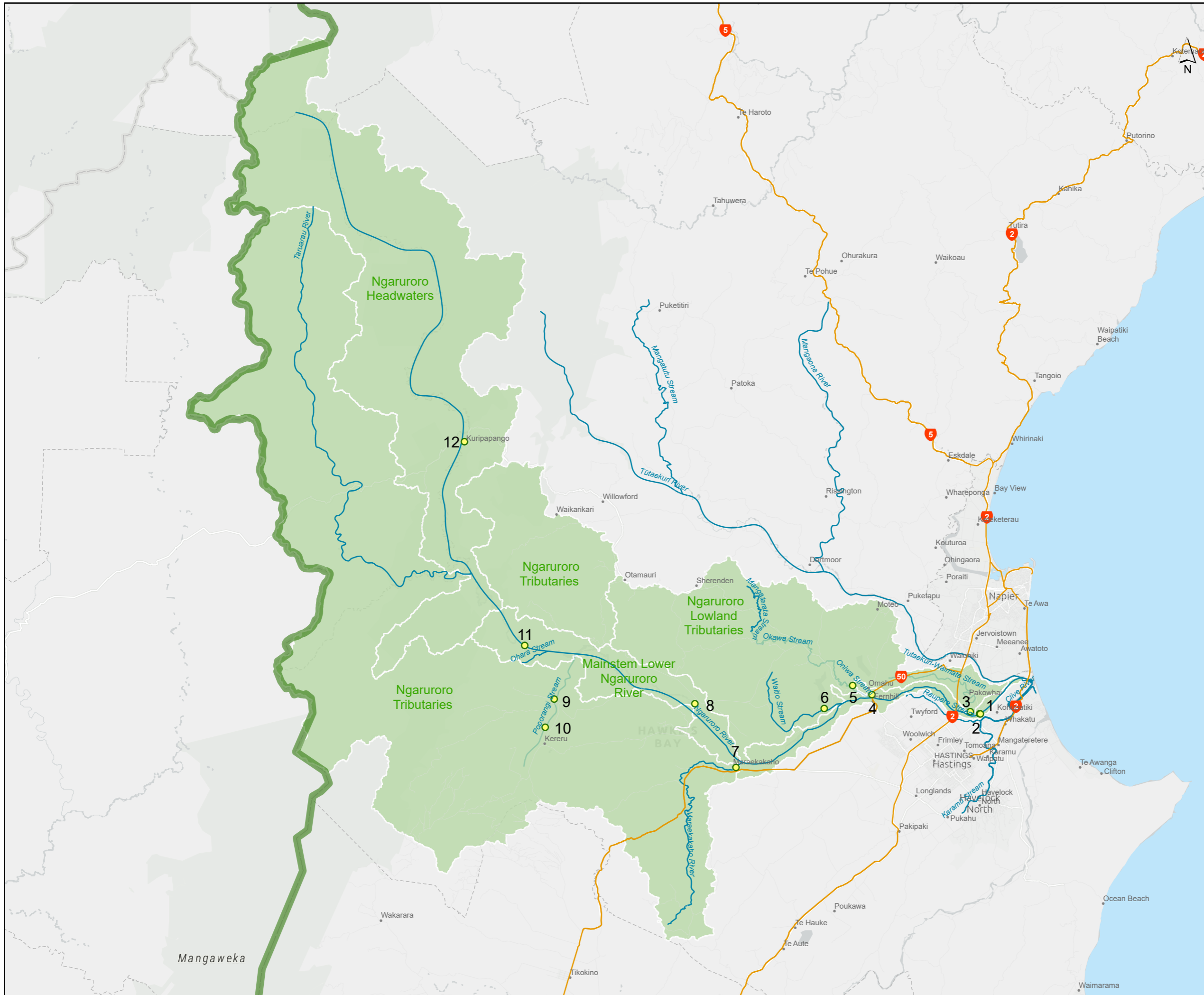
- Ahuriri Surface Water Quality Area
- Monitoring Points

- 1 - Pandora Pond (Primary Rec)
- 2 - Taipo Stream



DATA FROM: Land Use information obtained from the Hawke's Bay Regional Council's Geographic Information Systems Database.  
 LIMITATIONS AND COPYRIGHT  
 This map may not be reproduced or transmitted to any other party, in any form or by any means, electronic, mechanical, photocopying, recording or otherwise, without the written permission of the copyright holder.  
 DISCLAIMER  
 The Hawke's Bay Regional Council cannot guarantee that the data shown on this map is 100% accurate.





**TANK**

*Tūtaekuri, Ahuriri, Ngaruroro, Karamū*

**Proposed Plan Change 9**

**Schedule 26  
Map 3**

**Ngaruroro Surface  
Water Quality Area**

**QUALITY**

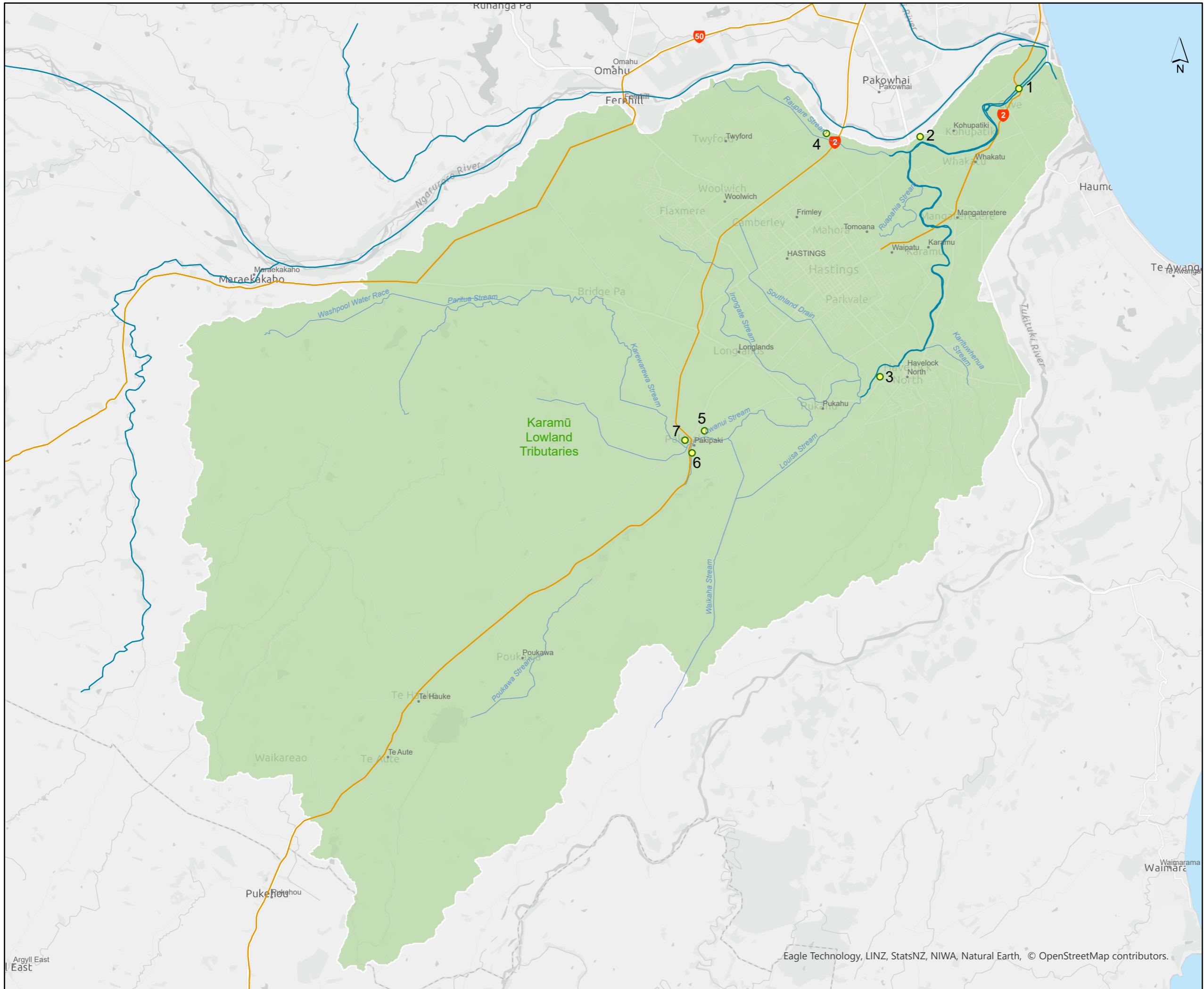
- Ngaruroro Surface Water Quality Area
- Monitoring Points

- 1 - Ngaruroro River (Primary Rec)
- 2 - Ngaruroro River at Chesterhope
- 3 - Tūtaekuri Waimate Stream
- 4 - Ngaruroro River at Fernhill
- 5 - Ohiwa Stream
- 6 - Waitio Stream
- 7 - Maraekakaho Stream
- 8 - Ngaruroro River DS HB Dairies
- 9 - Ohara Stream
- 10 - Poporangi Stream
- 11 - Ngaruroro River at Whanawhana
- 12 - Ngaruroro River at Kuripapango



DATA FROM: Land Use information obtained from the Hawke's Bay Regional Council's Geographic Information Systems Database.  
 LIMITATIONS AND COPYRIGHT  
 This map may not be reproduced or transmitted to any other party, in any form or by any means, electronic, mechanical, photocopying, recording or otherwise, without the written permission of the copyright holder.  
 DISCLAIMER  
 The Hawke's Bay Regional Council cannot guarantee that the data shown on this map is 100% accurate.





**TANK**  
*Tūtaekuri, Ahuriri, Ngaruroro, Karamū*  
**Proposed Plan Change 9**

**Schedule 26  
 Map 4**

**Karamū Surface  
 Water Quality Area**

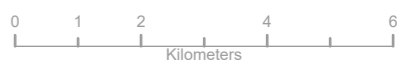
**QUALITY**

- Karamū Surface Water Quality Area
- Monitoring Points

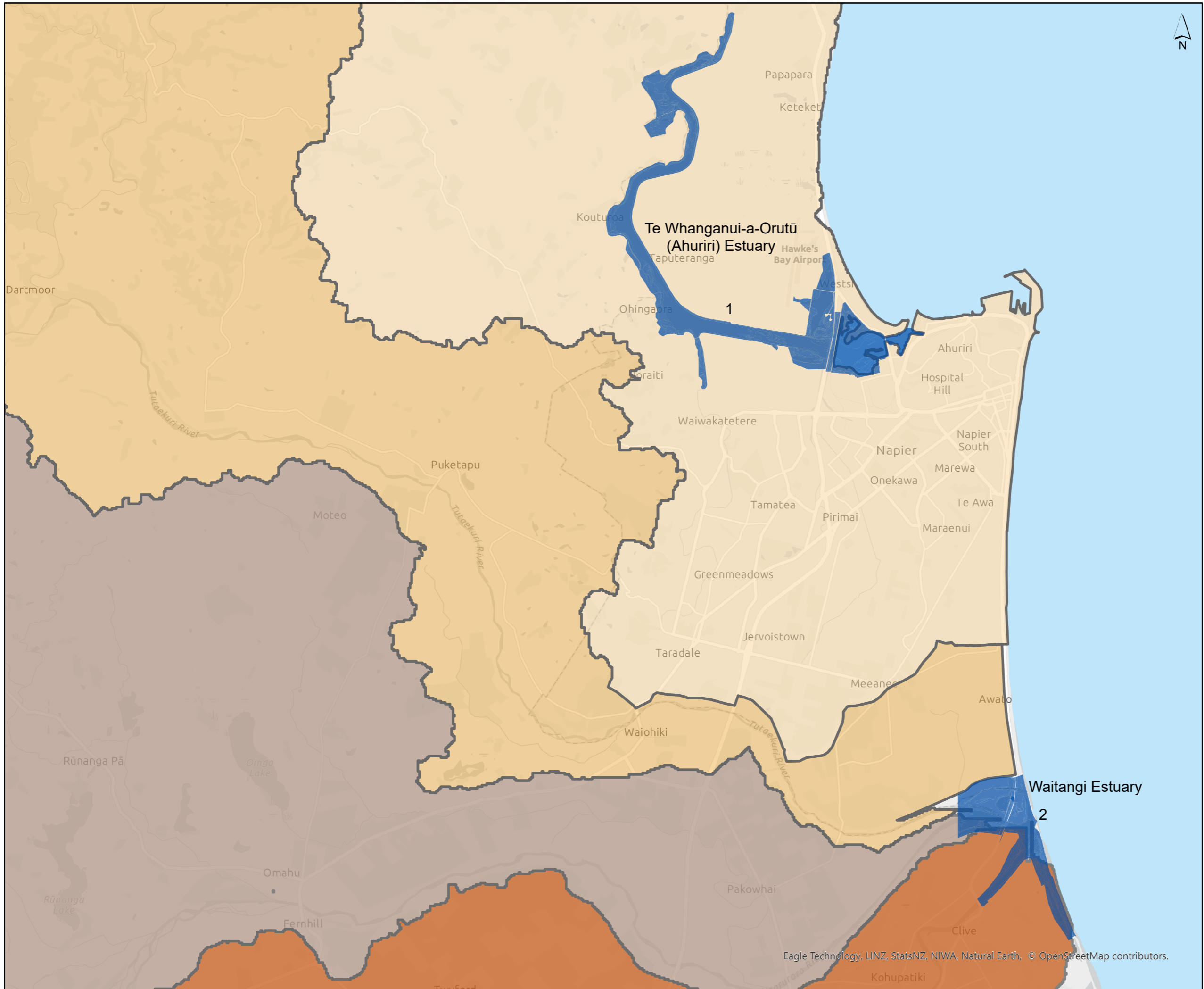
- 1 - Clive River (Primary Rec)
- 2 - Clive River
- 3 - Herehere Stream
- 4 - Raupare Stream
- 5 - Awanui Stream
- 6 - Poukawa Stream
- 7 - Karewarewa Stream



DATA FROM: Land Use information obtained from the Hawke's Bay Regional Council's Geographic Information Systems Database.  
 LIMITATIONS AND COPYRIGHT  
 This map may not be reproduced or transmitted to any other party, in any form or by any means, electronic, mechanical, photocopying, recording or otherwise, without the written permission of the copyright holder.  
 DISCLAIMER  
 The Hawke's Bay Regional Council cannot guarantee that the data shown on this map is 100% accurate.



Eagle Technology, LINZ, StatsNZ, NIWA, Natural Earth, © OpenStreetMap contributors.



**TANK**

*Tūtaekuri, Ahuriri, Ngaruroro, Karamū*

**Proposed Plan Change 9**

**Schedule 26  
Map 5**

**Ahuriri Estuary &  
Waitangi Estuary**

- Ahuriri Catchment
- Karamū Catchment
- Ngaruroro Catchment
- Tūtaekuri Catchment
- Estuary
- Monitoring Points

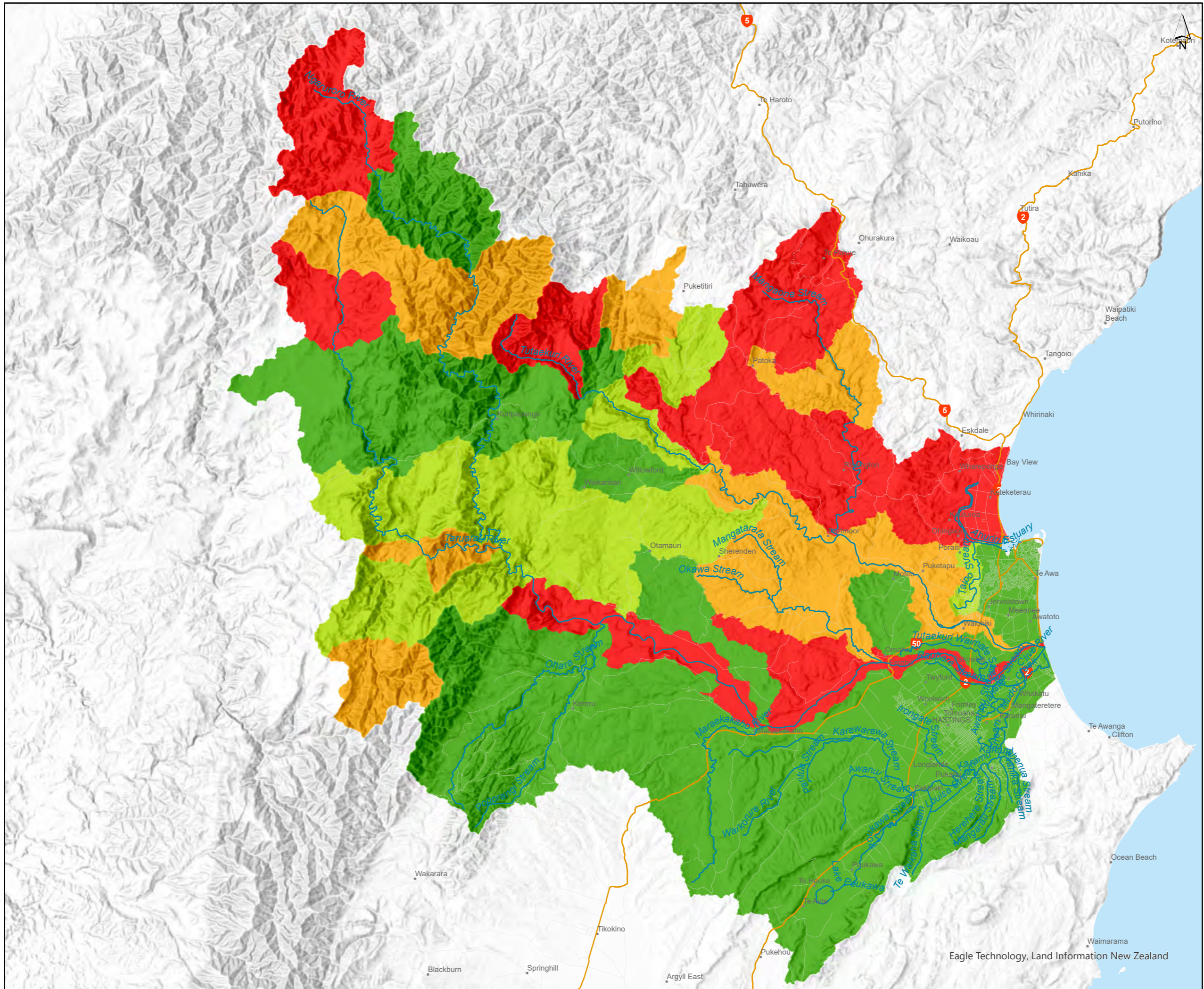
- 1 - Ahuriri Estuary/Te Whanganui-a-Orutū
- 2 - Waitangi Estuary



DATA FROM: Land Use information obtained from the Hawke's Bay Regional Council's Geographic Information Systems Database.  
LIMITATIONS AND COPYRIGHT  
This map may not be reproduced or transmitted to any other party, in any form or by any means, electronic, mechanical, photocopying, recording or otherwise, without the written permission of the copyright holder.  
DISCLAIMER  
The Hawke's Bay Regional Council cannot guarantee that the data shown on this map is 100% accurate.



Eagle Technology, LINZ, StatsNZ, NIWA, Natural Earth, © OpenStreetMap contributors.



**TANK**  
*Tūtaekuri, Ahuriri, Ngaruroro, Karamū*  
**Proposed Plan Change 9**

**Schedule 27  
 Map 1**

**Priority Catchments  
 Sediment Yield**

- Long Term Priority
- Low Priority
- Medium Priority
- High Priority

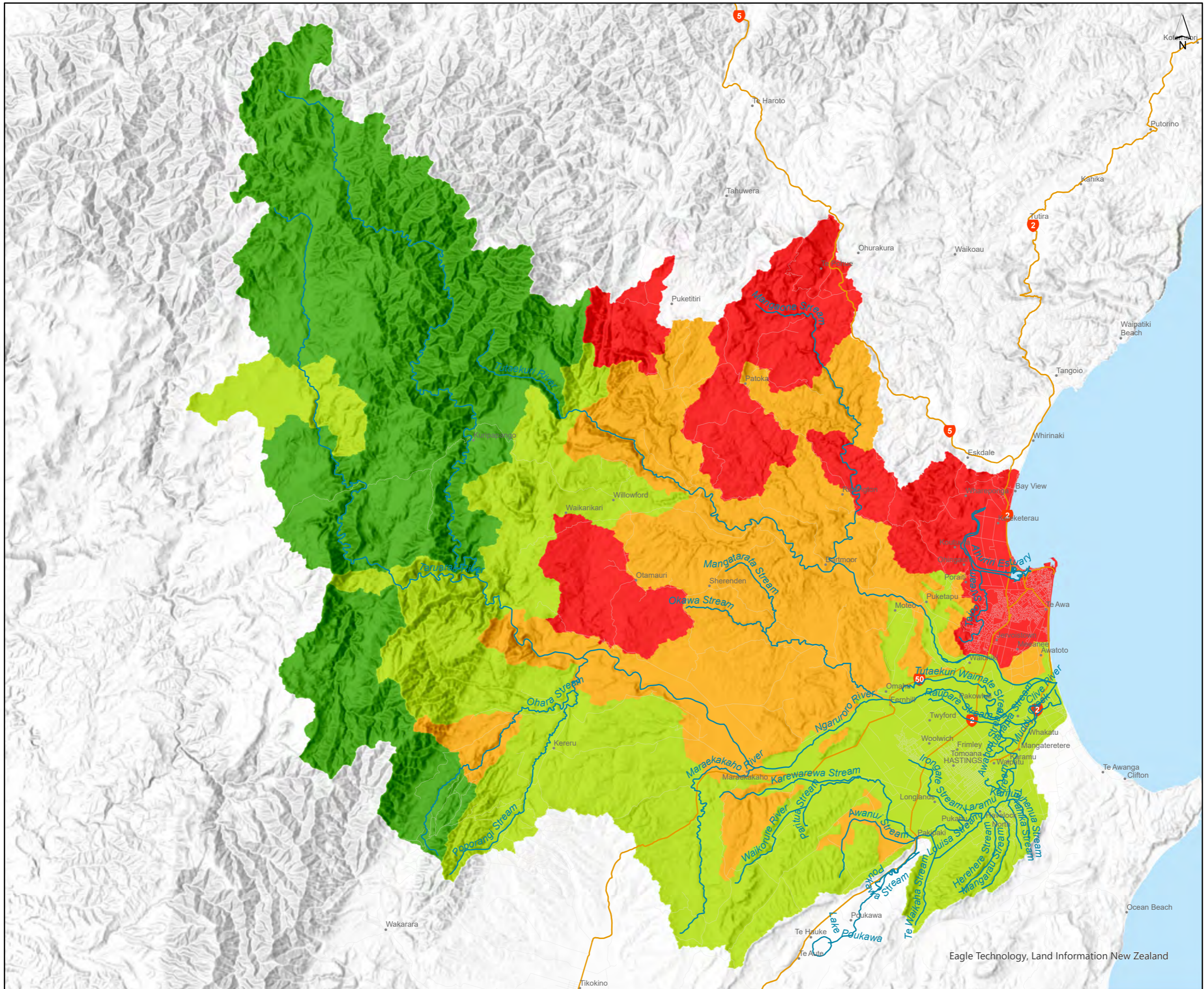


DATA FROM: Land Use information obtained from the Hawke's Bay Regional Council's Geographic Information Systems Database.  
 LIMITATIONS AND COPYRIGHT  
 This map may not be reproduced or transmitted to any other party, in any form or by any means, electronic, mechanical, photocopying, recording or otherwise, without the written permission of the copyright holder.  
 DISCLAIMER  
 The Hawke's Bay Regional Council cannot guarantee that the data shown on this map is 100% accurate.



Eagle Technology, Land Information New Zealand





**TANK**  
*Tūtaekuri, Ahuriri, Ngaruro, Karamū*  
**Proposed Plan Change 9**

**Schedule 27  
 Map 2**

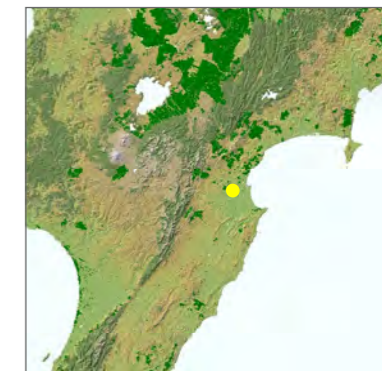
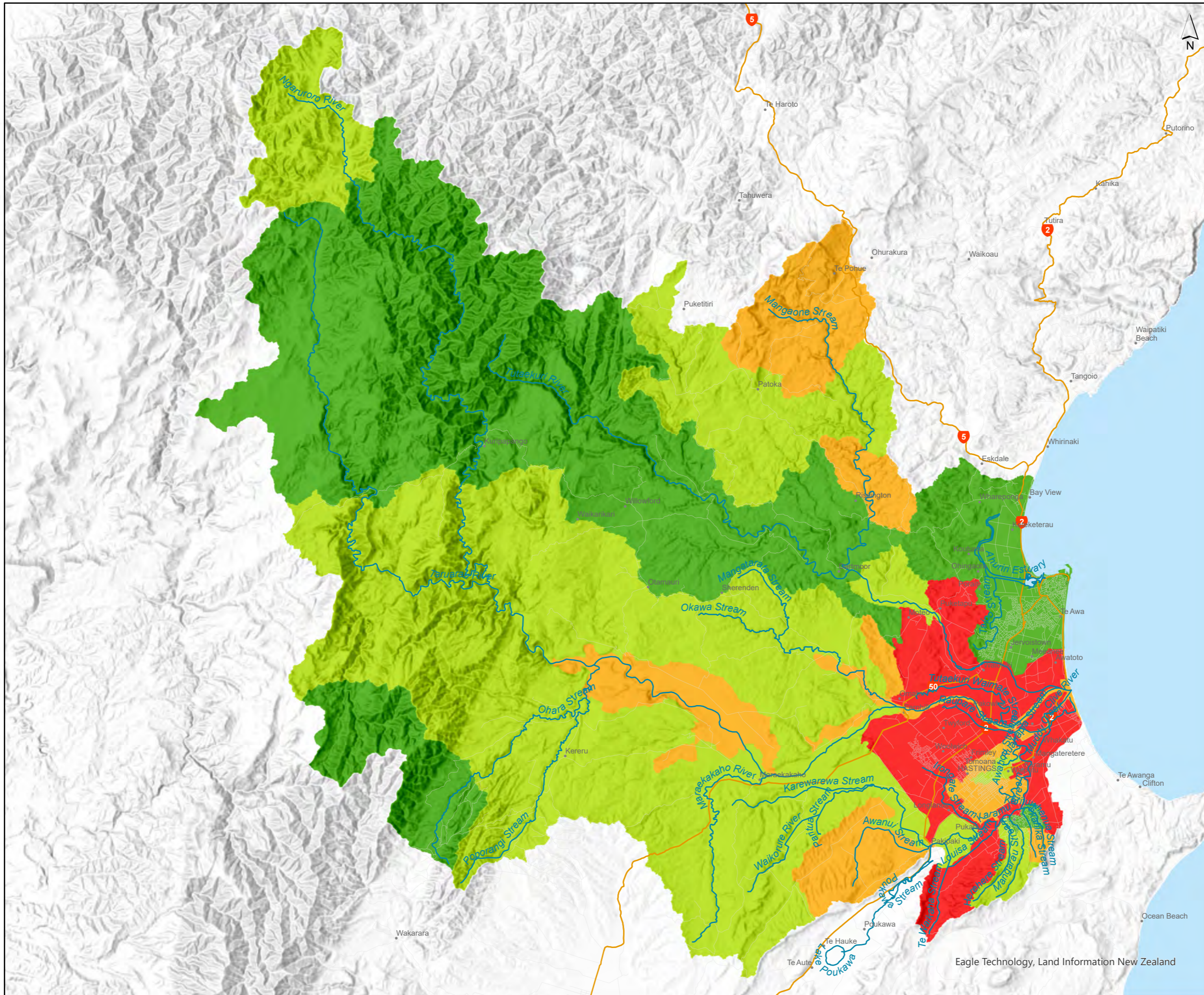
**Priority Catchments  
 Phosphorus Yield**

- Long Term Priority
- Low Priority
- Medium Priority
- High Priority



DATA FROM: Land Use information obtained from the Hawke's Bay Regional Council's Geographic Information Systems Database.  
 LIMITATIONS AND COPYRIGHT  
 This map may not be reproduced or transmitted to any other party, in any form or by any means, electronic, mechanical, photocopying, recording or otherwise, without the written permission of the copyright holder.  
 DISCLAIMER  
 The Hawke's Bay Regional Council cannot guarantee that the data shown on this map is 100% accurate.





**TANK**  
*Tūtaekuri, Ahuriri, Ngaruro, Karamū*  
**Proposed Plan Change 9**

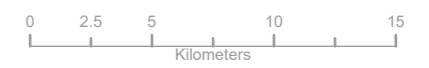
**Schedule 27**  
**Map 3**

**Priority Catchments**  
**Nitrogen Yield**

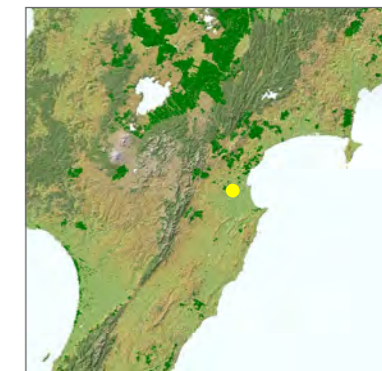
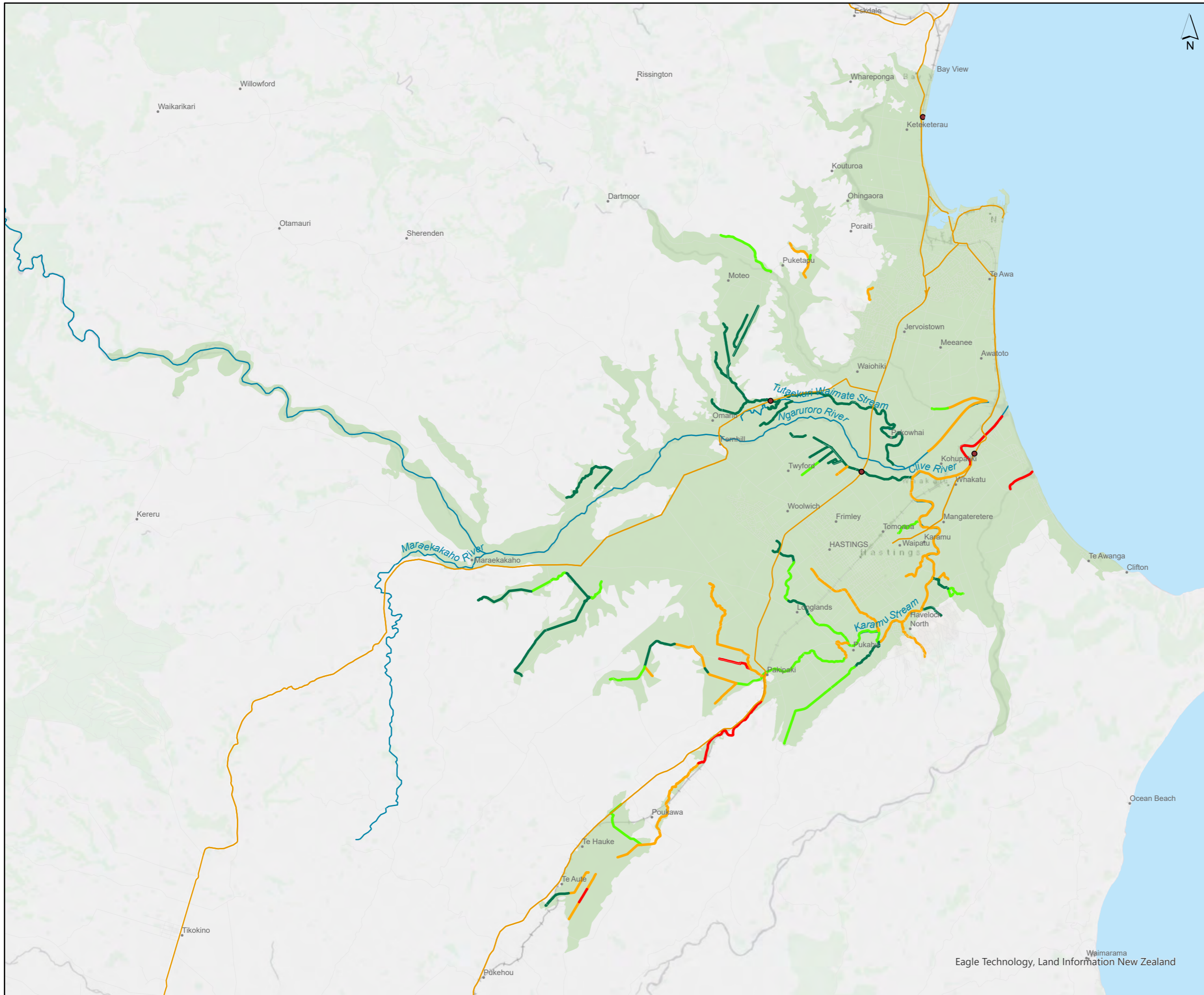
- Long Term Priority
- Low Priority
- Medium Priority
- High Priority



DATA FROM: Land Use information obtained from the Hawke's Bay Regional Council's Geographic Information Systems Database.  
 LIMITATIONS AND COPYRIGHT  
 This map may not be reproduced or transmitted to any other party, in any form or by any means, electronic, mechanical, photocopying, recording or otherwise, without the written permission of the copyright holder.  
 DISCLAIMER  
 The Hawke's Bay Regional Council cannot guarantee that the data shown on this map is 100% accurate.



Eagle Technology, Land Information New Zealand



**TANK**  
*Tūtaekuri, Ahuriri, Ngaruroro, Karamū*  
**Proposed Plan Change 9**

**Schedule 27**  
**Map 4**

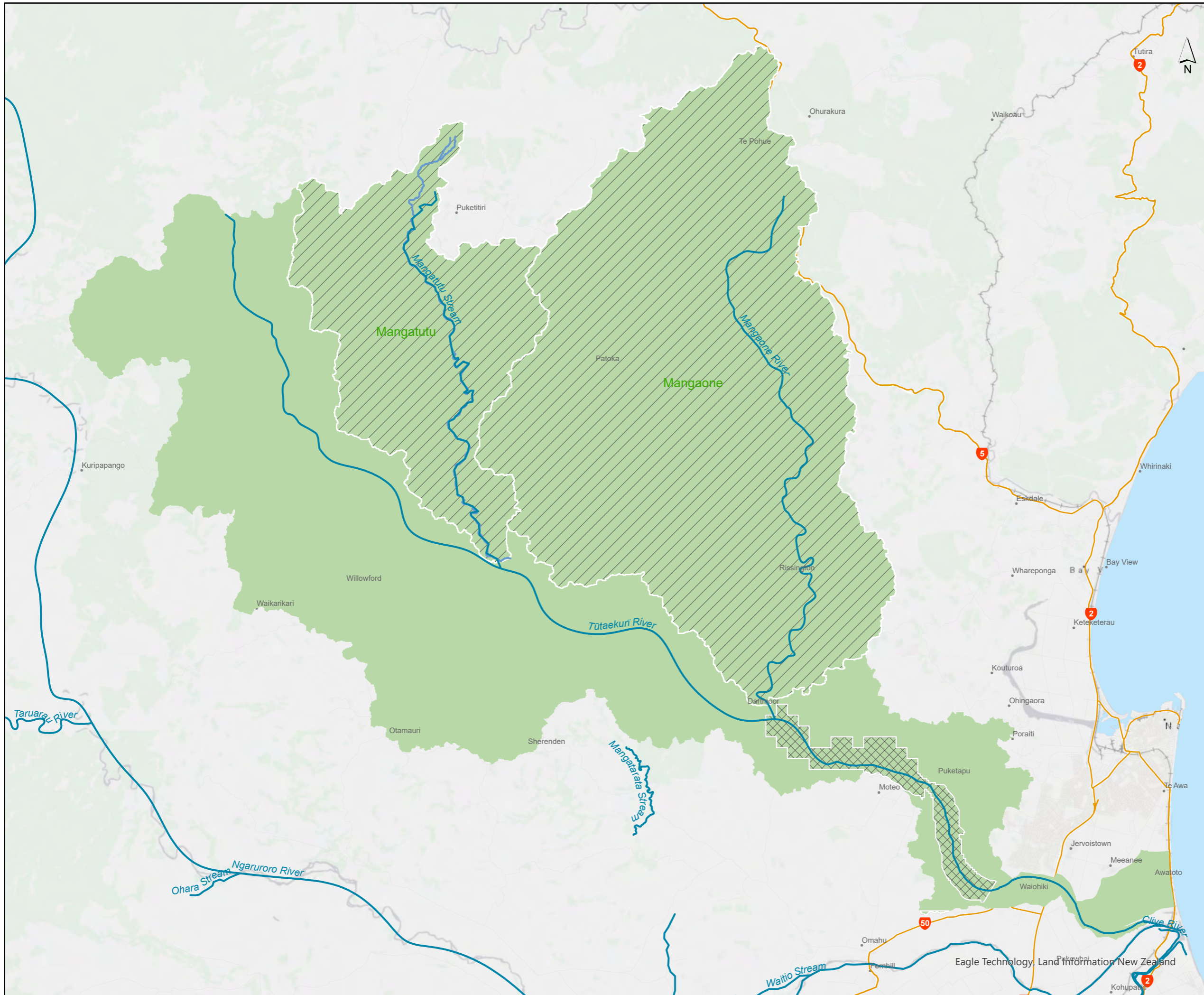
**Priority Catchments**  
**Dissolved Oxygen**

- █ Long Term Priority
- █ Low Priority
- █ Medium Priority
- █ High Priority



DATA FROM: Land Use information obtained from the Hawke's Bay Regional Council's Geographic Information Systems Database.  
 LIMITATIONS AND COPYRIGHT  
 This map may not be reproduced or transmitted to any other party, in any form or by any means, electronic, mechanical, photocopying, recording or otherwise, without the written permission of the copyright holder.  
 DISCLAIMER  
 The Hawke's Bay Regional Council cannot guarantee that the data shown on this map is 100% accurate.





**TANK**  
*Tūtaekuri, Ahuriri, Ngaruro, Karamū*  
**Proposed Plan Change 9**

Schedule 30  
 Map 1

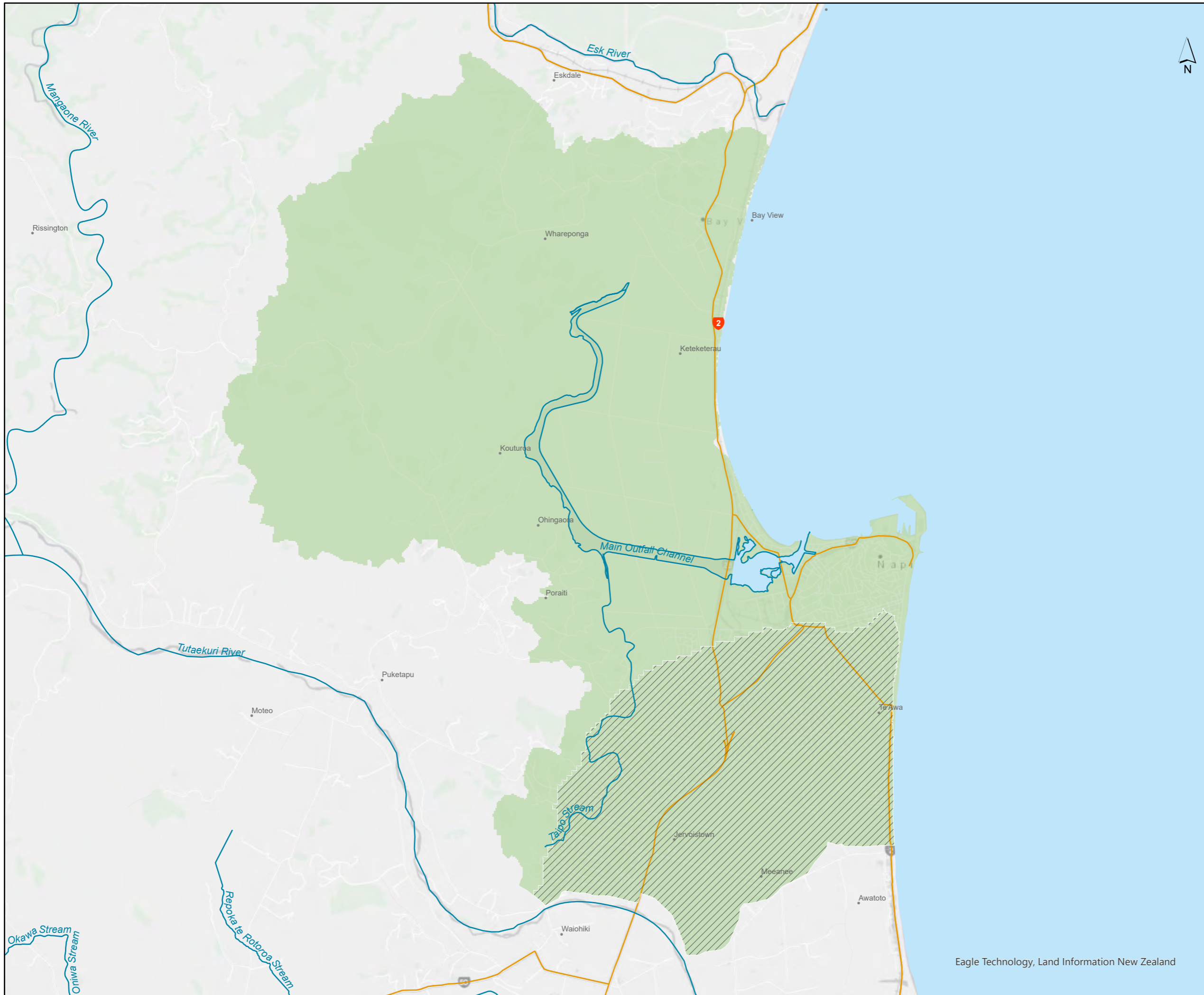
Tūtaekuri  
 Water Quantity Area  
 QUANTITY

- Tūtaekuri Water Quantity Area
- Zone 1 Groundwater
- Water Quantity Sub Area



DATA FROM: Land Use information obtained from the Hawke's Bay Regional Council's Geographic Information Systems Database.  
 LIMITATIONS AND COPYRIGHT  
 This map may not be reproduced or transmitted to any other party, in any form or by any means, electronic, mechanical, photocopying, recording or otherwise, without the written permission of the copyright holder.  
 DISCLAIMER  
 The Hawke's Bay Regional Council cannot guarantee that the data shown on this map is 100% accurate.





**TANK**

*Tūtaekuri, Ahuriri, Ngaruroro, Karamū*

**Proposed Plan Change 9**

Schedule 30  
Map 2

Ahuriri  
Water Quantity Area

QUANTITY

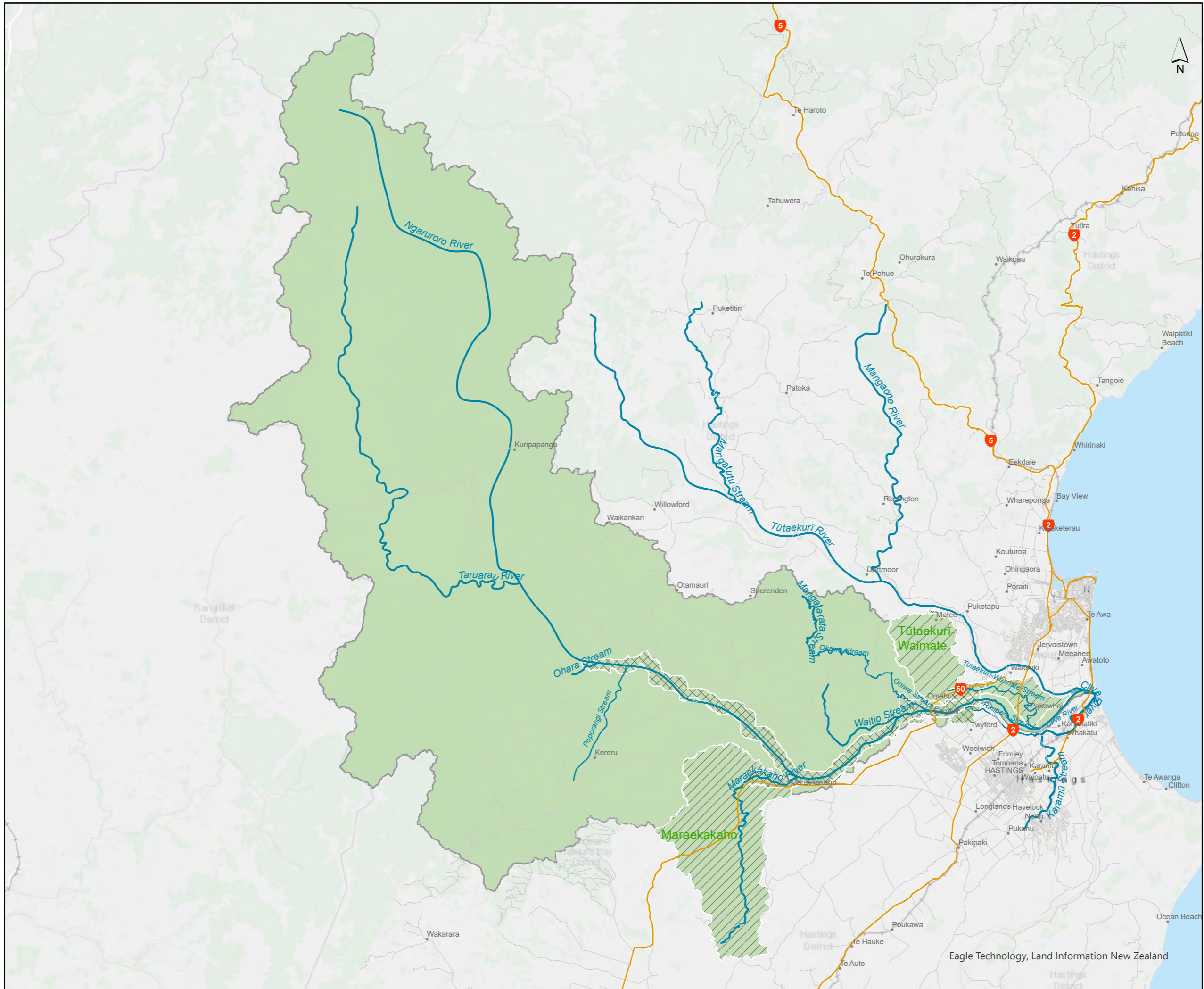
- Ahuriri Water Quantity Area
- Heretaunga Plains Groundwater Quantity Area



DATA FROM: Land Use information obtained from the Hawke's Bay Regional Council's Geographic Information Systems Database.  
LIMITATIONS AND COPYRIGHT  
This map may not be reproduced or transmitted to any other party, in any form or by any means, electronic, mechanical, photocopying, recording or otherwise, without the written permission of the copyright holder.  
DISCLAIMER  
The Hawke's Bay Regional Council cannot guarantee that the data shown on this map is 100% accurate.



Eagle Technology, Land Information New Zealand



**TANK**  
*Tūtaekuri, Ahuriri, Ngaruroro, Karamū*  
**Proposed Plan Change 9**

Schedule 30  
 Map 3

Ngaruroro  
 Water Quantity Area  
**QUANTITY**

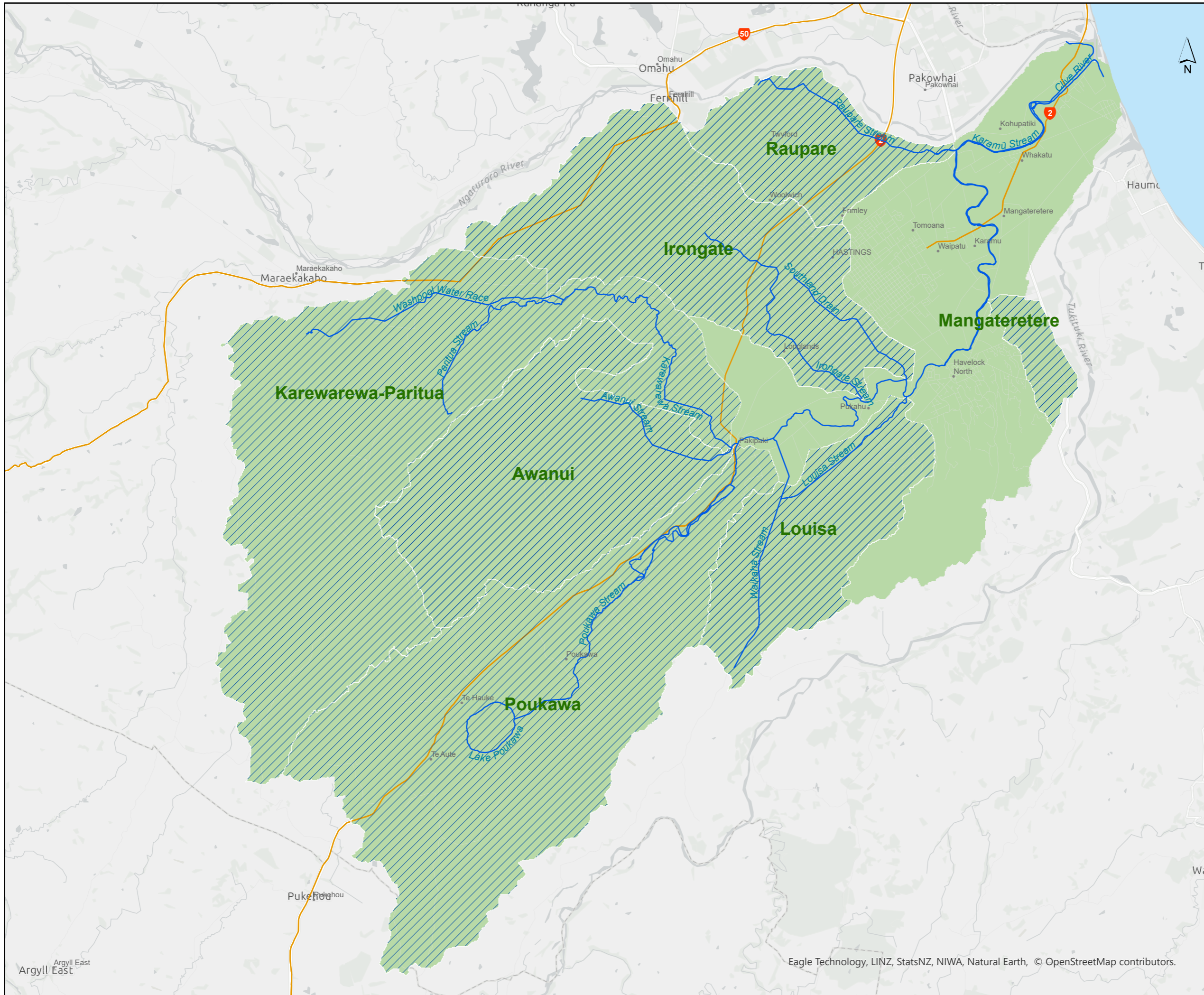
- Ngaruroro Water Quantity Area
- Zone 1 Groundwater
- Water Quantity Sub Area



DATA FROM: Land Use information obtained from the Hawke's Bay Regional Council's Geographic Information Systems Database.  
 LIMITATIONS AND COPYRIGHT  
 This map may not be reproduced or transmitted to any other party, in any form or by any means, electronic, mechanical, photocopying, recording or otherwise, without the written permission of the copyright holder.  
 DISCLAIMER  
 The Hawke's Bay Regional Council cannot guarantee that the data shown on this map is 100% accurate.



Eagle Technology, Land Information New Zealand



**TANK**  
*Tūtaekuri, Ahuriri, Ngaruroro, Karamū*  
**Proposed Plan Change 9**

Schedule 30  
 Map 4

Karamū  
 Water Quantity Area

QUANTITY

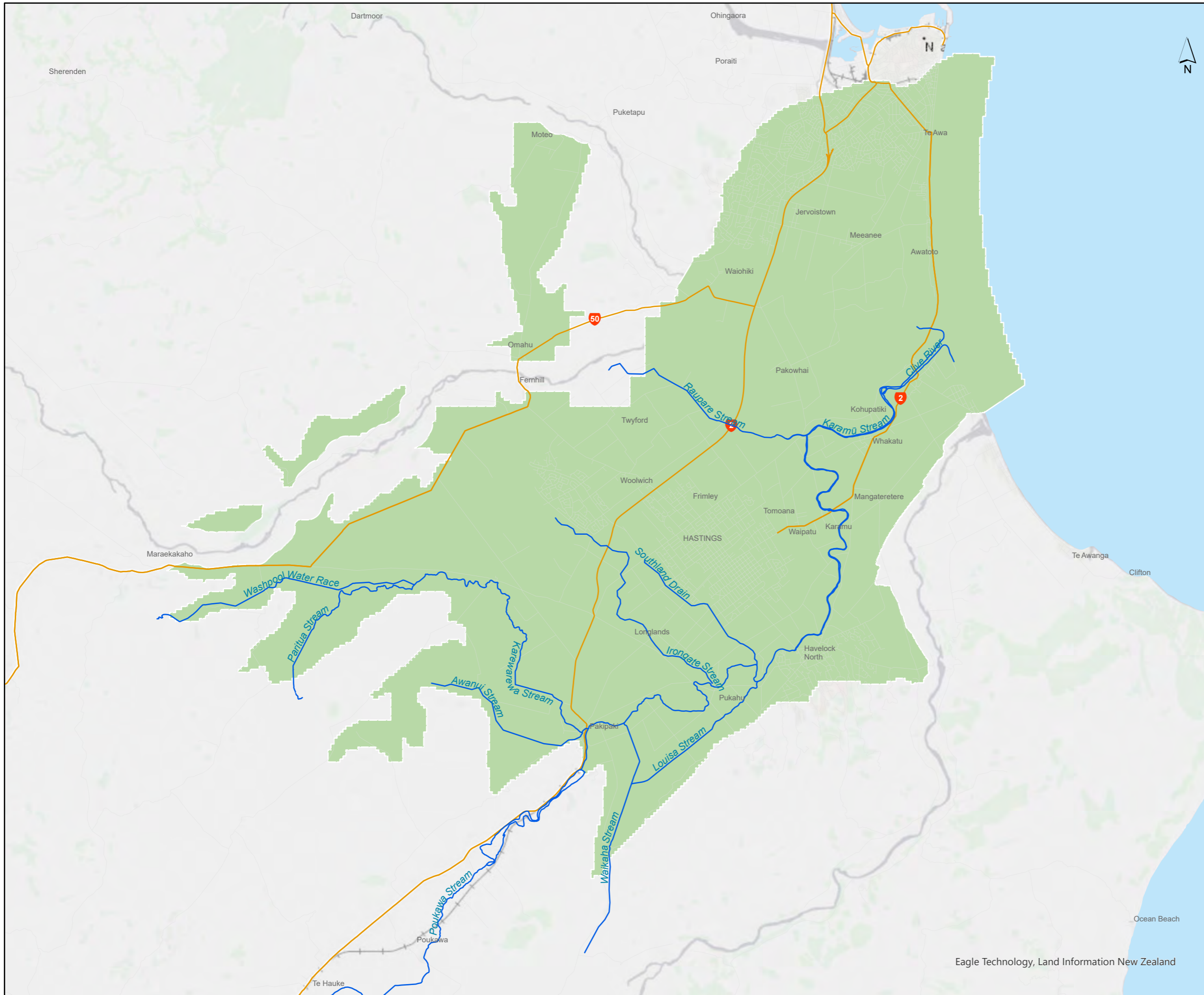
- Karamū Water Quantity Area
- Water Quantity Sub Area



DATA FROM: Land Use information obtained from the Hawke's Bay Regional Council's Geographic Information Systems Database.  
 LIMITATIONS AND COPYRIGHT  
 This map may not be reproduced or transmitted to any other party, in any form or by any means, electronic, mechanical, photocopying, recording or otherwise, without the written permission of the copyright holder.  
 DISCLAIMER  
 The Hawke's Bay Regional Council cannot guarantee that the data shown on this map is 100% accurate.



Eagle Technology, LINZ, StatsNZ, NIWA, Natural Earth, © OpenStreetMap contributors.




**TANK**  
*Tūtaekuri, Ahuriri, Ngaruroro, Karamū*  
**Proposed Plan Change 9**

Schedule 30  
 Map 5

Heretaunga Plains  
 Groundwater Quantity Area

**QUANTITY**

 Heretaunga Plains  
 Groundwater Quantity Area

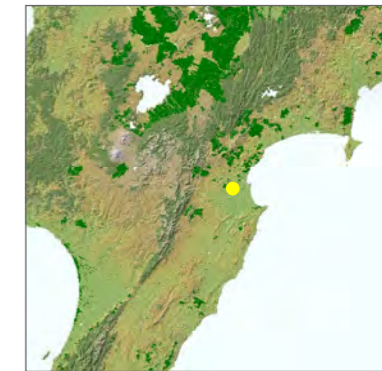
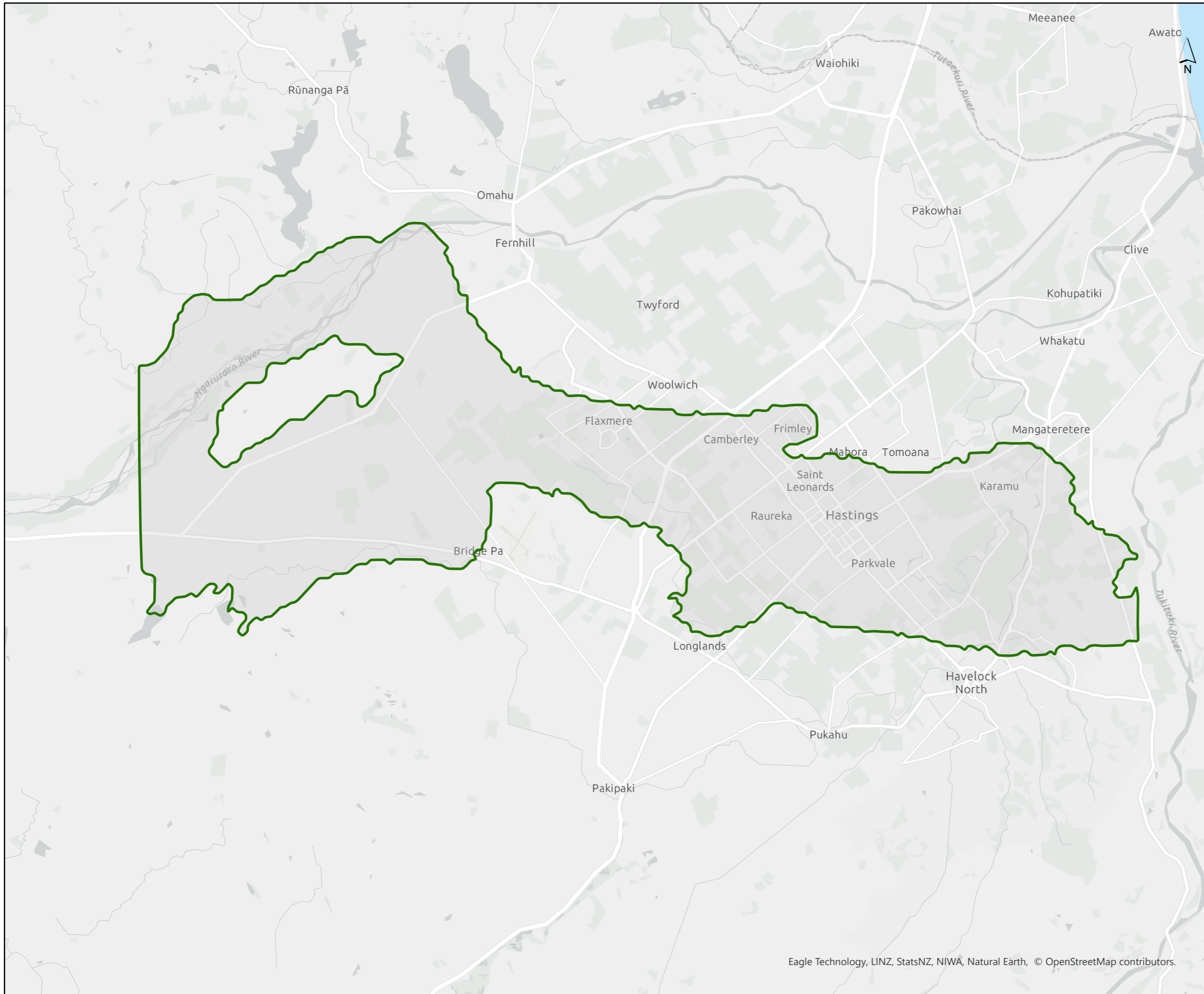


DATA FROM: Land Use information obtained from the Hawke's Bay Regional Council's Geographic Information Systems Database.  
 LIMITATIONS AND COPYRIGHT  
 This map may not be reproduced or transmitted to any other party, in any form or by any means, electronic, mechanical, photocopying, recording or otherwise, without the written permission of the copyright holder.  
 DISCLAIMER  
 The Hawke's Bay Regional Council cannot guarantee that the data shown on this map is 100% accurate.



Eagle Technology, Land Information New Zealand





**TANK**  
*Tūtaekuri, Ahuriri, Ngaururoro, Karamu*  
**Proposed Plan Change 9**

Schedule 34  
 Map 1

Hastings Source  
 Protection Zone

 Source Protection Zone



DATA FROM: Land Use information obtained from the Hawke's Bay Regional Council's Geographic Information Systems Database.  
 LIMITATIONS AND COPYRIGHT  
 This map may not be reproduced or transmitted to any other party, in any form or by any means, electronic, mechanical, photocopying, recording or otherwise, without the written permission of the copyright holder.  
 DISCLAIMER  
 The Hawke's Bay Regional Council cannot guarantee that the data shown on this map is 100% accurate.




Eagle Technology, LINZ, StatsNZ, NIWA, Natural Earth, © OpenStreetMap contributors.



**TANK**  
*Tūtaekurī, Ahuriri, Ngaurororo, Karamū*  
**Proposed Plan Change 9**

Schedule 34  
 Map 2

**Napier Source  
 Protection Zone**

 Source Protection Zone



DATA FROM: Land Use information obtained from the Hawke's Bay Regional Council's Geographic Information Systems Database.  
 LIMITATIONS AND COPYRIGHT  
 This map may not be reproduced or transmitted to any other party, in any form or by any means, electronic, mechanical, photocopying, recording or otherwise, without the written permission of the copyright holder.  
 DISCLAIMER  
 The Hawke's Bay Regional Council cannot guarantee that the data shown on this map is 100% accurate.



Eagle Technology, LINZ, StatsNZ, NIWA, Natural Earth, © OpenStreetMap contributors.