



THECATALYSTGROUP
strategy and environment

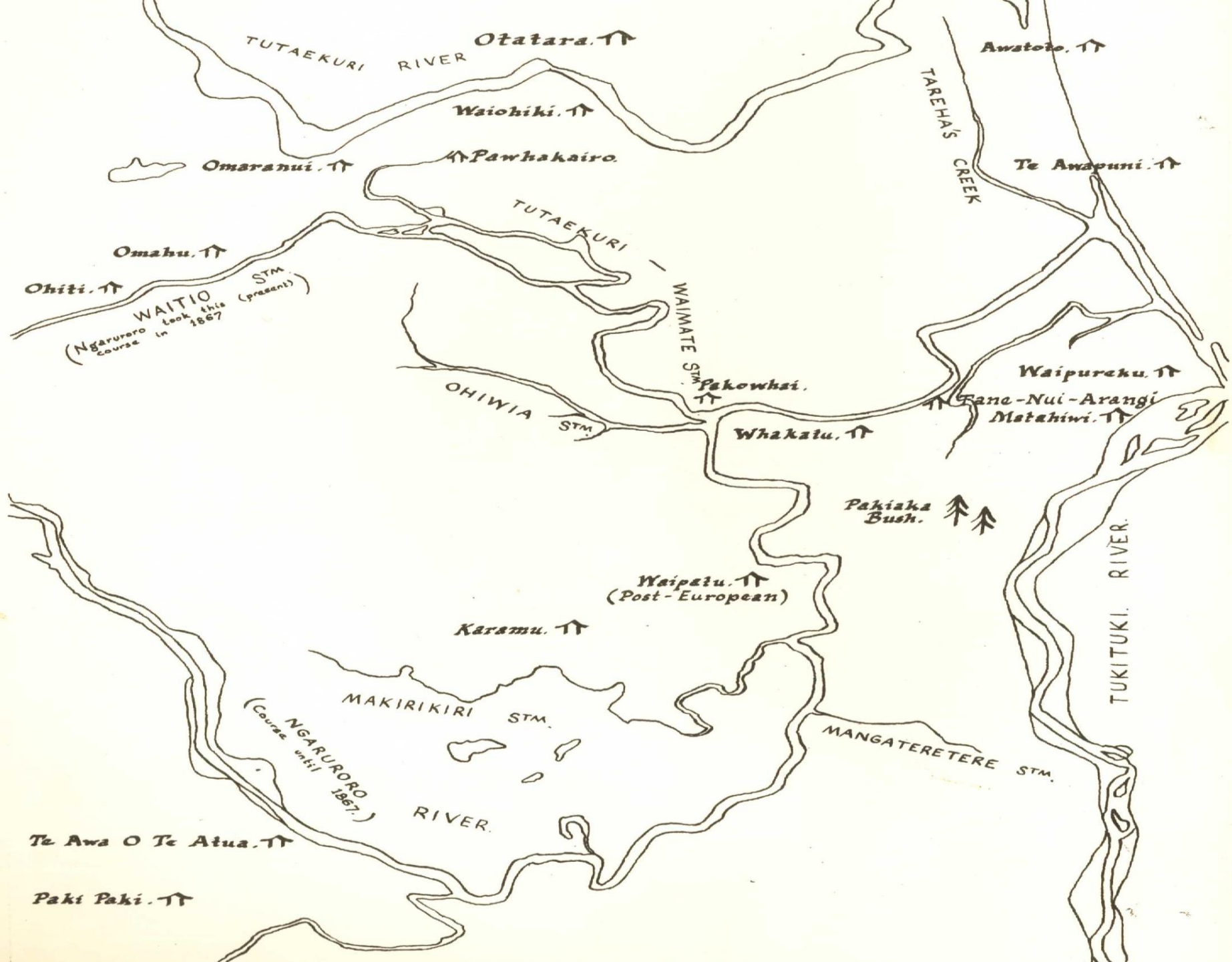


Mauri Protection Agency

Ngaruroro Mokotuararo ki Rangatira

Ngaruroro River

Wariu me huanga
Values and attributes



TUTAEKURI RIVER Otatara. ↑↑

Awatoto. ↑↑

Waiohiki. ↑↑

TAREHA'S CREEK

Oamaranui. ↑↑

↑↑ Pawhakaroro

Te Awapuni. ↑↑

Omahu. ↑↑

TUTAEKURI

Ohiti. ↑↑

WAITIO
(Ngaruroro Course in 1867)
STM (present)

WAIMATE STM

OHIWIA STM

Pakowhai. ↑↑

Waipurehu. ↑↑

Fane-Nui-Arangi
Matahiwi. ↑↑

Whakatu. ↑↑

Pakiaki Bush. ↑↑

Waipatu. ↑↑
(Post-European)

Karamu. ↑↑

TUKITUKI RIVER.

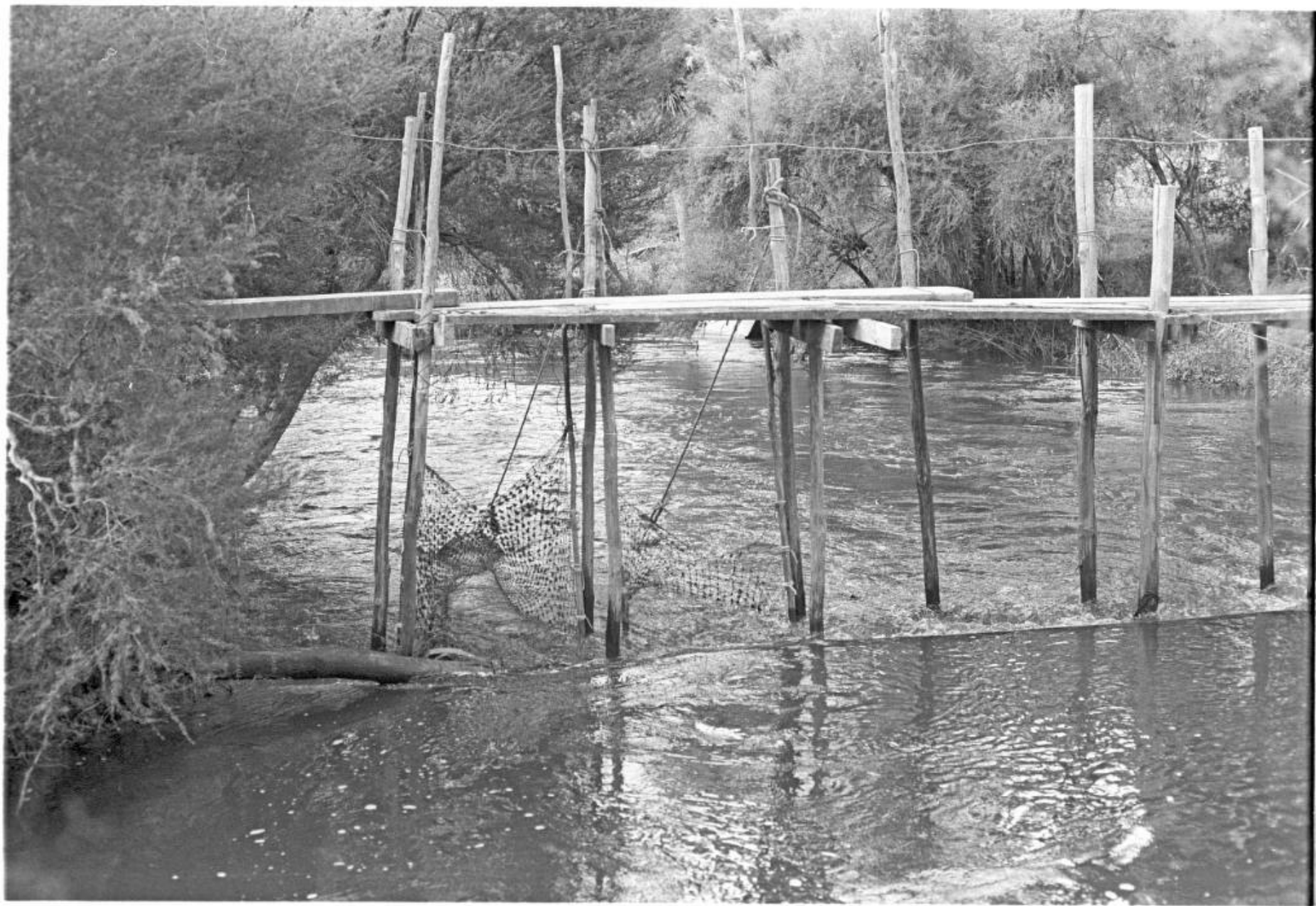
MAKIRIKIRI STM.
(Course until 1867.)
NGARURORO RIVER.

MANGATERETERE STM.

Te Awa O Te Atua. ↑↑

Paki Paki. ↑↑







Resource Management Act 1991



National Policy Statement Freshwater Management 2014

Regional Resource Management Plan



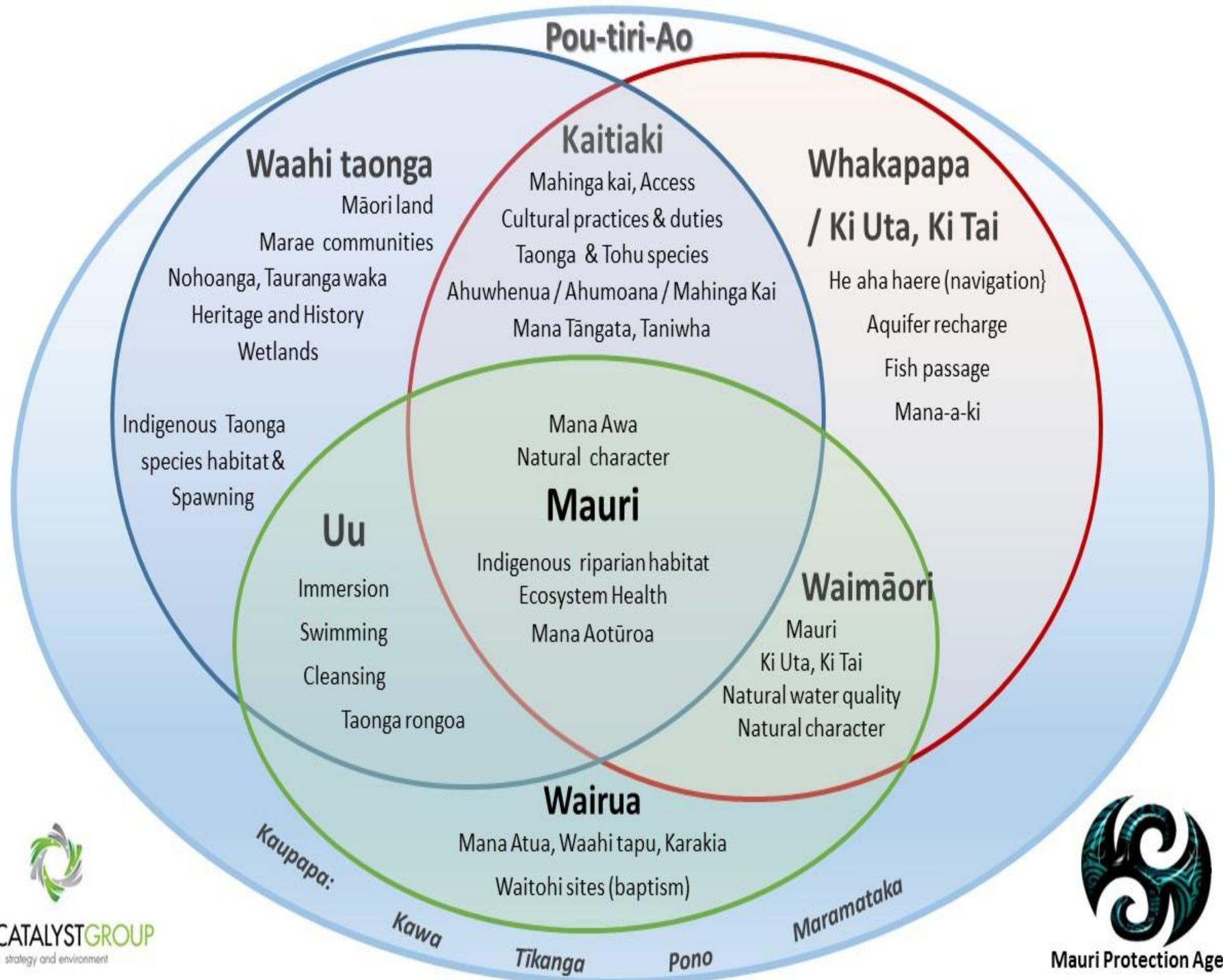
Plan Process

Values >

Attributes - What to measure? >

Objectives >

Outcomes - Moemoea!!



Awa-wide wariu

Wariu group	Sub-values: Awa-wide
Uu	Uu (immersion, swimming, cleansing)
Waimāori	Mauri; Ki Uta, Ki Tai
	Natural water quality
	Natural character
Mauri	Ecosystem health
	Indigenous riparian margin
	Natural character
Kaitiakitanga	Ahumoana, Ahuwhenua, Mahinga kai (species & practice)
	Te Tuturutanga mahi pono te hapai o ...
	Access
Whakapapa / Ki Uta, Ki Tai	Fish passage
Wairua	Karakia
	Mana Atua



Awa-wide wariu

Wariu group	Sub-values: Awa-wide
Uu	Uu (immersion, swimming, cleansing)
Waimāori	Mauri; Ki Uta, Ki Tai
	Natural water quality
	Natural character
Mauri	Ecosystem health
	Indigenous riparian margin
	Natural character
Kaitiakitanga	Ahumoana, Ahuwhenua, Mahinga kai (species & practice)
	Te Tuturutanga mahi pono te hapai o ...
	Access
Whakapapa / Ki Uta, Ki Tai	Fish passage
Wairua	Karakia
	Mana Atua



Awa-wide wariu

Wariu group	Sub-values: Awa-wide
Uu	Uu (immersion, swimming, cleansing)
Waimāori	Mauri; Ki Uta, Ki Tai
	Natural water quality
	Natural character
Mauri	Ecosystem health
	Indigenous riparian margin
	Natural character
Kaitiakitanga	Ahumoana, Ahuwhenua, Mahinga kai (species & practice)
	Te Tuturutanga mahi pono te hapai o ...
	Access
Whakapapa / Ki Uta, Ki Tai	Fish passage
Wairua	Karakia
	Mana Atua

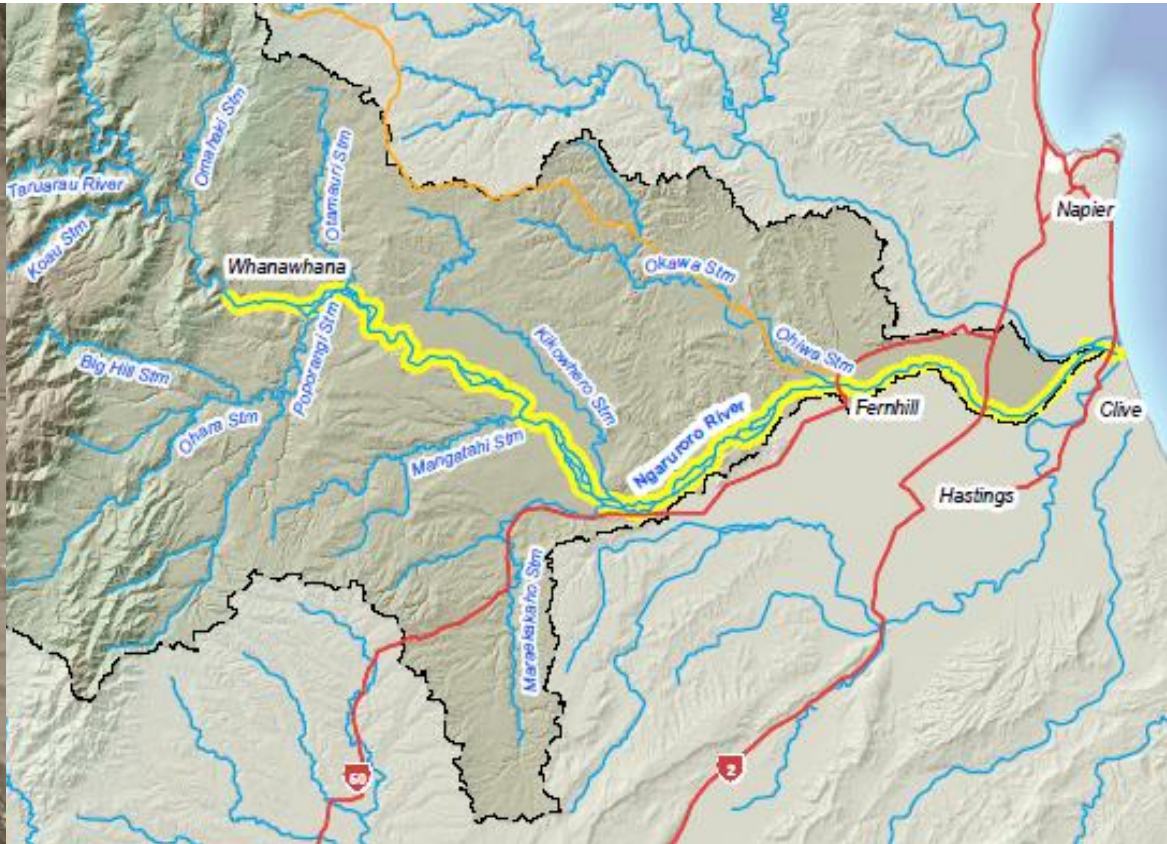


Site/reach specific wariu

Wariu group	Sub-values	Site/reach
Whakapapa / Ki Uta, Ki Tai	He aha haere (navigability)	Mainstem river mouth to Whanawhana. Lake's Runanga, Oingo, Hinemoana, Kotuku.
	Aquifer recharge	Recharge zone – including land
Kaitiakitanga	Indigenous Taonga / Tohu species, habitat and spawning	Upland: all catchment and tributaries upstream of Whanawhana
		Awa kopaka (braided): Whanawhana to Fernhill
		Lowland: Fernhill to Chesterhope Bridge
		Estuarine: Chesterhope Bridge to sea

Site/reach specific wariu

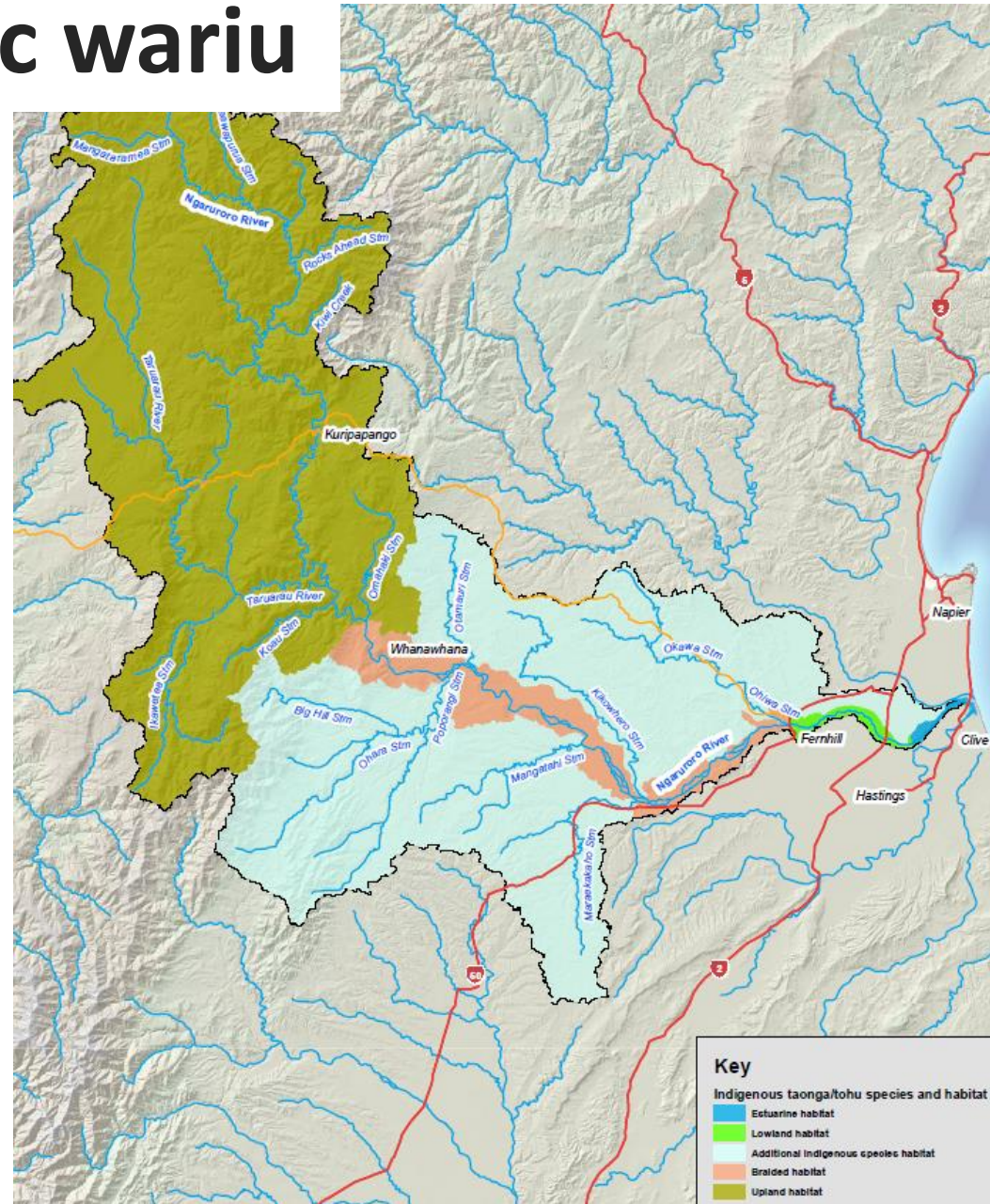
Wariu group	Sub-values	Site/reach
Whakapapa / Ki Uta, Ki Tai	He aha haere (navigability)	Mainstem river mouth to Whanawhana. Lake's Runanga, Oingo, Hinemoana, Kotuku.



Site/reach specific wariu

Wariu group Kaitiakitanga

Sub-values	Site/reach
Indigenous Taonga / Tohu species, habitat and spawning	Upland: all catchment and tributaries upstream of Whanawhana
	Awa kopaka (braided): Whanawhana to Fernhill
	Lowland: Fernhill to Chesterhope Bridge
	Estuarine: Chesterhope Bridge to sea



NZ HAS THE HIGHEST RATE OF THREATENED SPECIES IN THE WORLD

We have

985

threatened species,



plus another

2772

at risk.

That is

80%

of our birds,



88%

of our lizards,



72%

of fresh water fish.



Indigenous Riparian and Habitat Restoration



Mahi Pono...
(monitoring)



Site/reach specific wariu

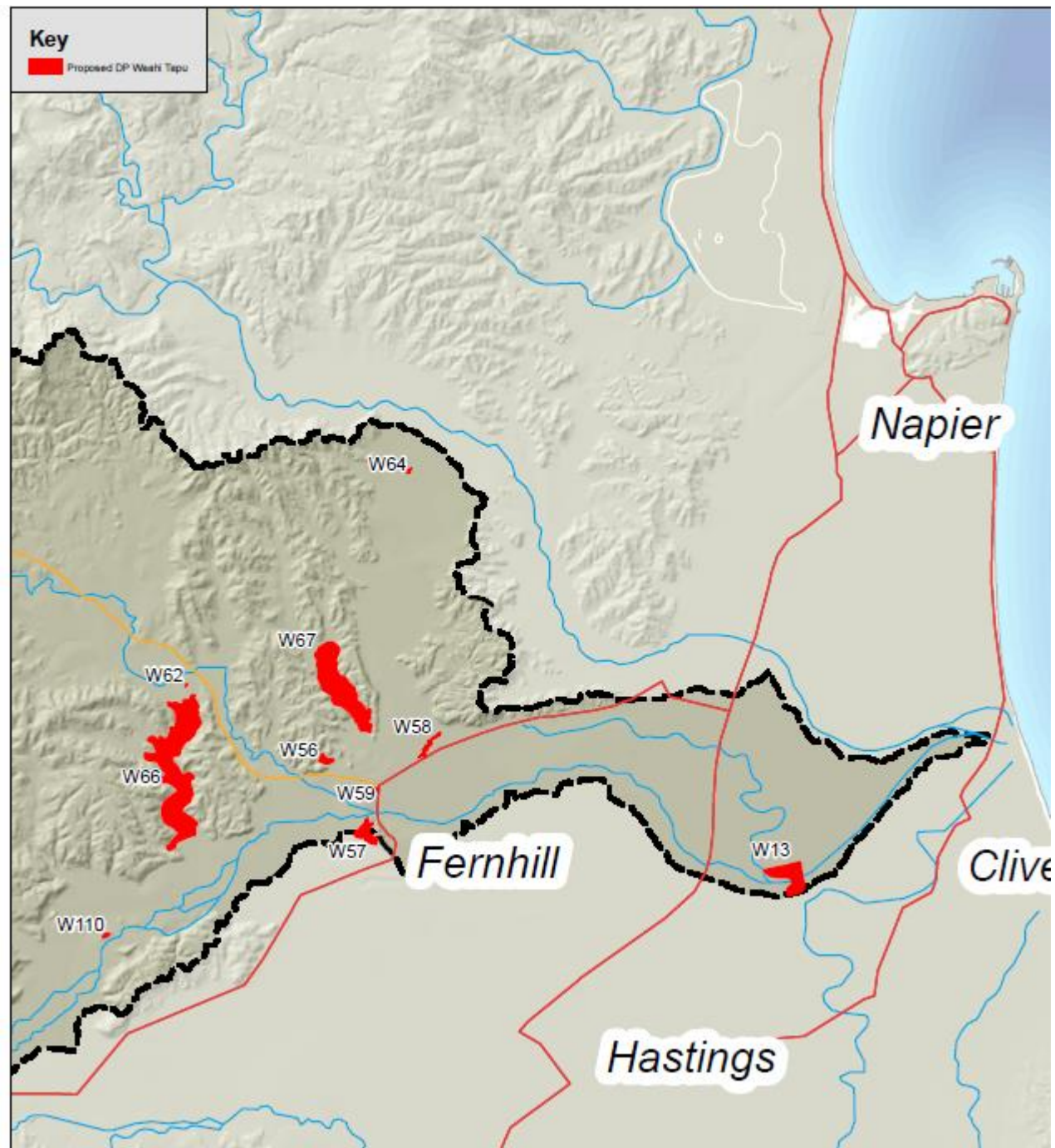
Wariu group	Sub-values	Site/reach
Waahi Taonga	Waahi tapu	Defined sites
	Mahinga kai Ahumoana, Ahuwhenua,	Defined sites
	Nohoanga	Defined sites
	Cultural practices	Defined sites
	Tauranga waka	Defined sites
	Heritage and History	Defined sites
	Wetlands	HBRC defined sites
	Māori land	Māori land containing or adjacent to waterbodies including tributaries
	Marae / hapu	Defined areas of interest (Councils' Pataka project)

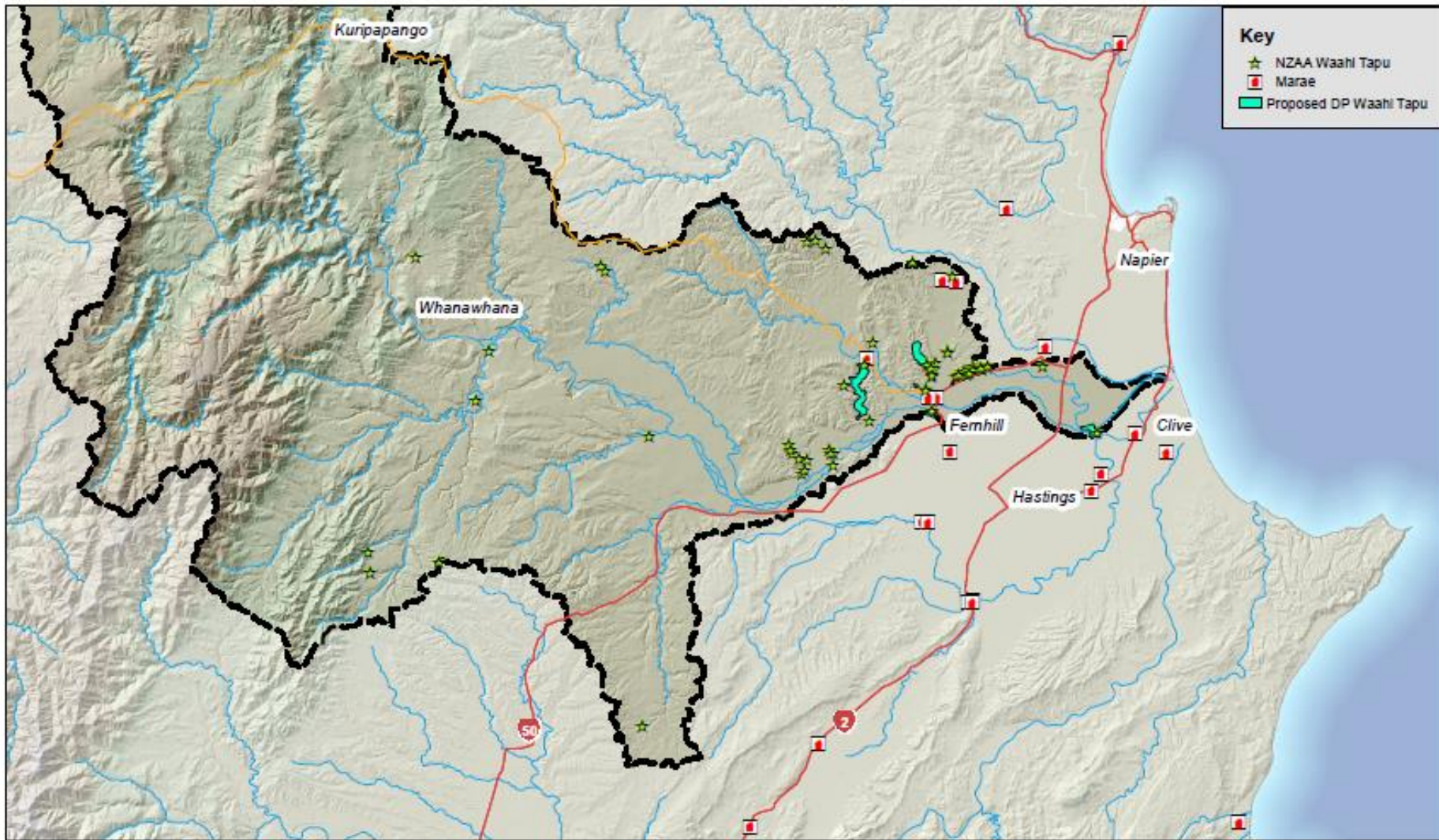
Hastings District
Council – Plan
proposed Waahi
Taonga.

NZAA

TOW Statutory
Acknowledgement

History





Key

- ☆ NZAA Waahi Tapu
- ☒ Marae
- ▭ Proposed DP Waahi Tapu

Marae locations
 Ngaruroro Waahi Taonga
 (NZAA and HDC proposed)

Legend

Ngaruroro Catchment Boundary

0 2 4 6 8 10
 Kilometres

Map produced by Sepentire Mapping
 2016/01/16
 NZTM Projection
 Map Includes Crown Copyright Layers
 Project 1 - 1:100,000 NZAA Waahi Tapu.mxd
 Map 0 Waahi - Waahi Taonga.pdf



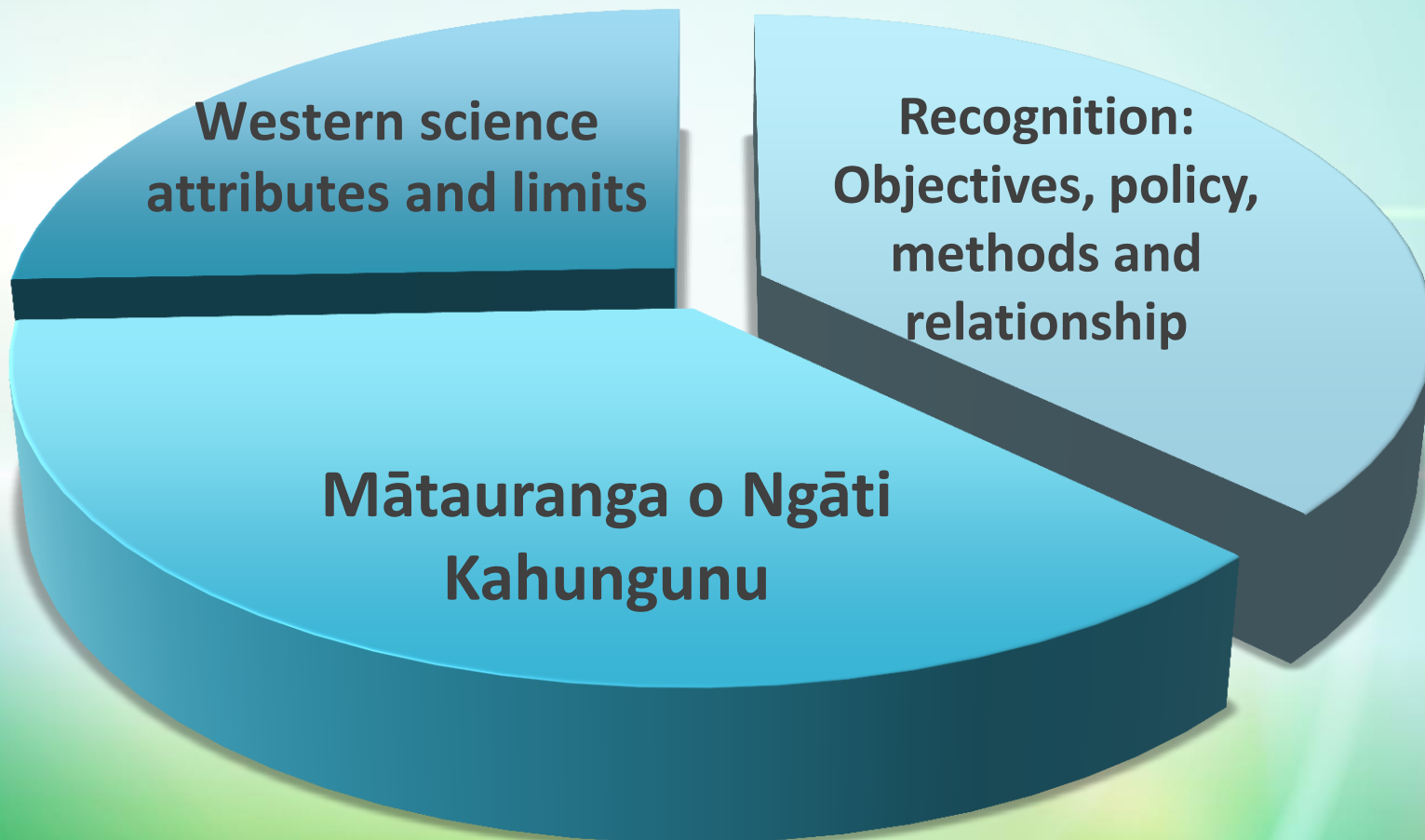


THECATALYSTGROUP
strategy and environment

**Mauri -
Wairua - Mana
- Kaitiaki**



THECATALYSTGROUP
strategy and environment



Matrix: wāriu ki huanga - Ngā Ngaru o ngā Upokororo

Kaitiakitanga	Min. flow	Dissolved oxygen	Deposited Sediment	MCI	E. coli	Periphyton % cover	Clarity	Stock access
Indigenous taonga/tohu species	✓	✓	✓	✓		✓	✓	✓
Mahingakai - practice	✓		✓		✓	✓	✓	✓
Uu								
Immersion, swimming, cleansing	✓		✓		✓ No human or animal waste	✓	✓	✓
Whakapapa								
Aquifer recharge	✓				✓			✓
He aha haere	✓				✓			

