



Ki uta ki tai



Mohaka Catchment

Plan change development: Public Meeting 1
November 2020


HAWKES BAY
REGIONAL COUNCIL

TE KAUNIHERA Ā-ROHE O TE MATAU-A-MĀUI

Karakia Timatanga Opening Prayer

.....

**Whakataka te hau ki te uru
Whakataka te hau ki te tonga
Kia mākinakina ki uta
Kia mātaratara ki tai
E hī ake ana te atakura
He tio
He huka
He hauhū
Tihei mauri ora**

Cease the winds from the west
Cease the winds from the south
Let the breeze blow over the land
Let the breeze blow over the ocean
Let the red-tipped dawn come with a
sharpened air.
A touch of frost, a promise of a
glorious day.

Why are we here?

.....



- To improve how we manage our land and freshwater resources together
- To identify
 - The community's vision for managing land and freshwater within the Mohaka
 - What is important to the community
 - Issues and opportunities
- To give effect to the national Essential Freshwater programme
 - Review the Regional Plan for the Mohaka
 - Mohaka Action Plan
 - Local expression of Te Mana o Te Wai
- To recognise previous involvement with the Taharua community

Who is involved?

- Mohaka Project Team
 - Dale Meredith – Project Lead, Policy
 - Gary Rushworth – Science Lead
 - Melanie Taiaroa, Nathan Heath – Maori Partnerships
 - Brendan Powell – Policy Implementation Lead
 - Rebecca Ashcroft-Cullen – Communication Lead
 - Bonny Hatami – NPDT, advisor, engagement
- HBRC councillors
- RPC (councillors and PSGE reps)
- Iwi leaders
- Tangata whenua, stakeholders and wider community
- Email mohaka.plan@hbrc.govt.nz



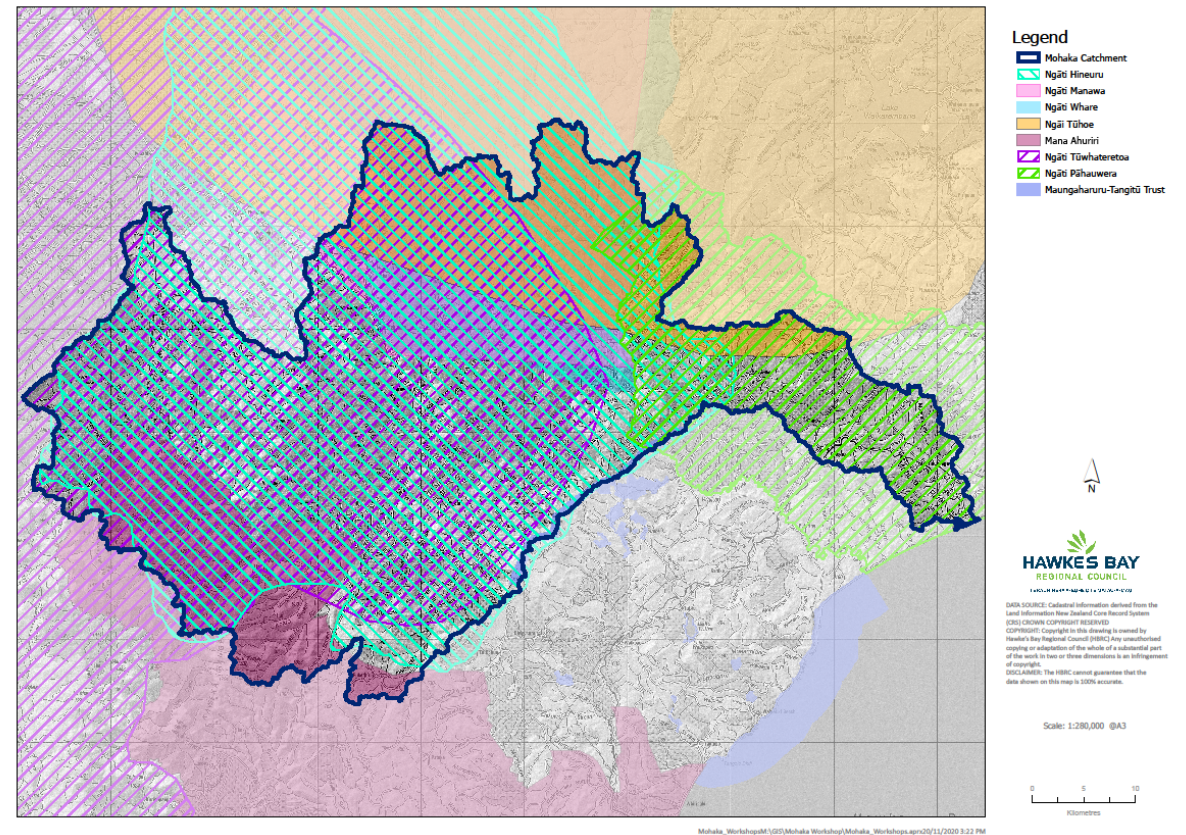
Figure 1: How regional councils must give effect to Te Mana o te Wai

Mohaka PSGEs



Pāhauwera
Hineuru
Tūwharetoa
Mana Ahuriri
Maungaharuru Tangitū
Tūhoe
Manawa
Whare

+ Taiwhenua



What will be in the plan?

Regional Plan

- Mohaka catchment vision, outcomes
- Te Mana o Te Wai
- Mātauranga
- Objectives, policies & rules
- Environmental limits, targets & bottom-lines
- Protections (Water Conservation Order, outstanding water bodies)
- More stringent than national rules (eg winter grazing? stock exclusion? forestry?)

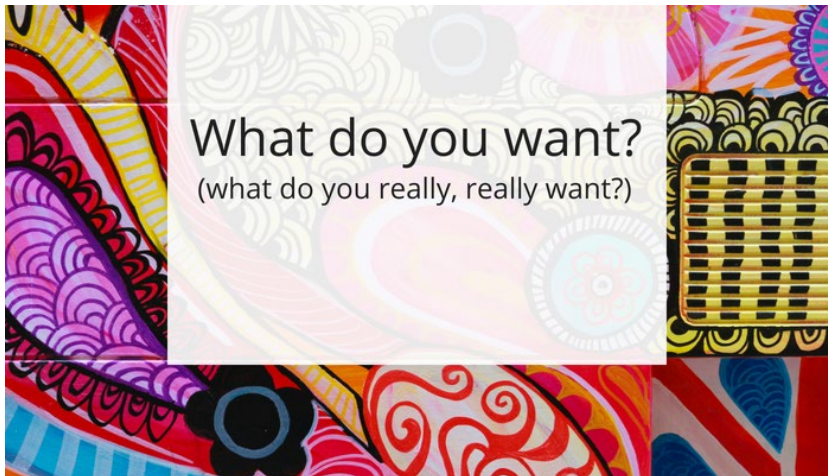
Mohaka Action Plan(s)

- Actions to improve freshwater
- HBRC, tangata whenua, stakeholders, landowners, community



Discussion 1: What is important?

- What do we love about the Mohaka/ its tributaries
- What is important to us
- What legacy would we like to leave for future generations



What is important?



Compulsory values nationally

- Ecosystem health
- Human contact
- Threatened species
- Mahinga kai



Optional values (must consider)



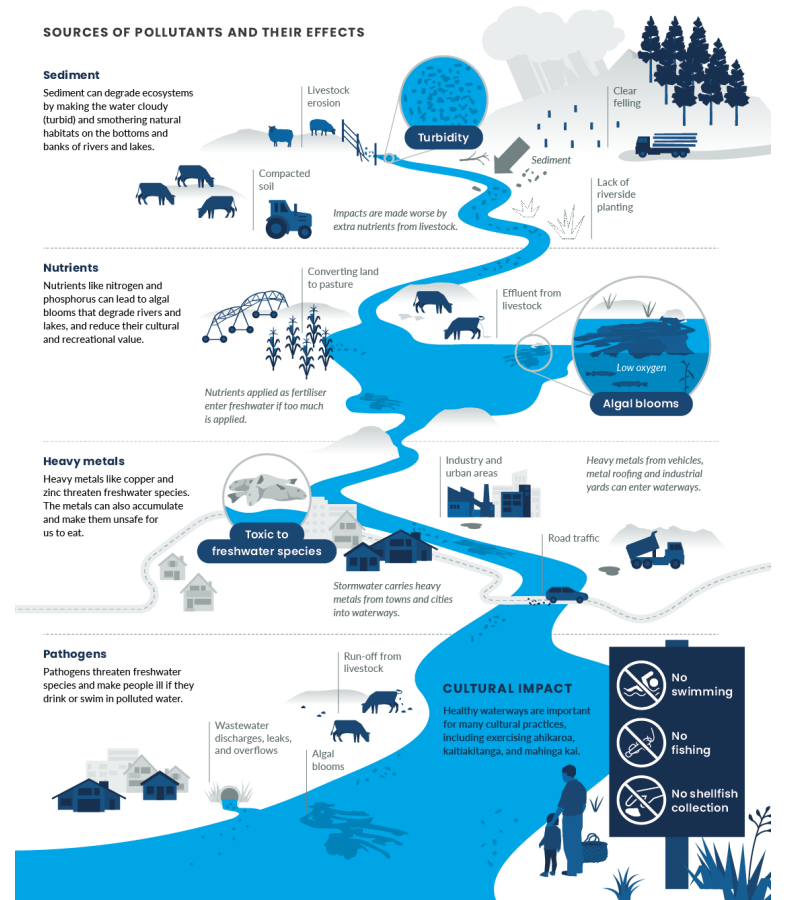
- Natural form & character
- Drinking water supply
- Wai tapu
- Transport & tauranga waka
- Fishing
- HEP generation
- Animal drinking water
- Irrigation, cultivation, production of food & beverages
- Commercial & industrial use
- Other?



Mohaka – issues we know of

- Taharua Catchment
 - Degradation of water quality
 - Impacts on ecosystem health, trout, amenity
- Sediment
 - Geology & soils erosion prone
 - Impact on Lower Mohaka
- Land use practices
 - Stock in rivers
 - Forestry slash
- Tangata whenua
 - Restoration of mauri, wairua and mana
 - Aspirations for water

Waterways in urban, farming, and forestry areas are polluted by contaminants. This threatens our freshwater ecosystems and can make the water unsafe for us to use and enjoy.



What we heard from iwi leaders (Aug 2020)

- - - - -
- Treaty obligations & Te Mana o Te Wai
- Tangata whenua kaitiaki responsibilities
- Awa is tupuna & needs greater protection
 - restore mauri, wairua and mana of wai
- Mātauranga throughout
- State of the awa
 - water quality & land use concerns
 - Sediment, nutrients, livestock, slash, gravel extraction, infrastructure
- Talk to the whanau
- What is co-design?

Water Quality Monitoring



The map is a summary of key indicators of water quality:

Freshwater life

We monitor water quality and habitat for how well it can support life such as invertebrates, fish, and birds looking at macroinvertebrates and eco-toxicity

Nutrients

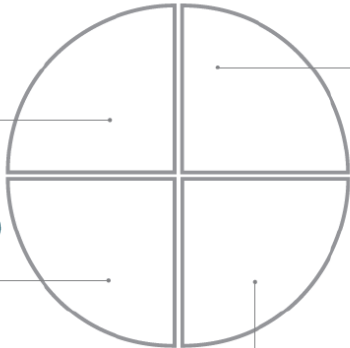
We monitor particular forms of nitrogen (N) and phosphorus (P) to understand the risk of nuisance growth of plants and algae

Human pathogens

We monitor for E. coli which is a common gut bacteria and a useful indicator of the risk of illness from pathogenic infection for humans

Sediment

We look at how clear the water is to identify the impact of erosion

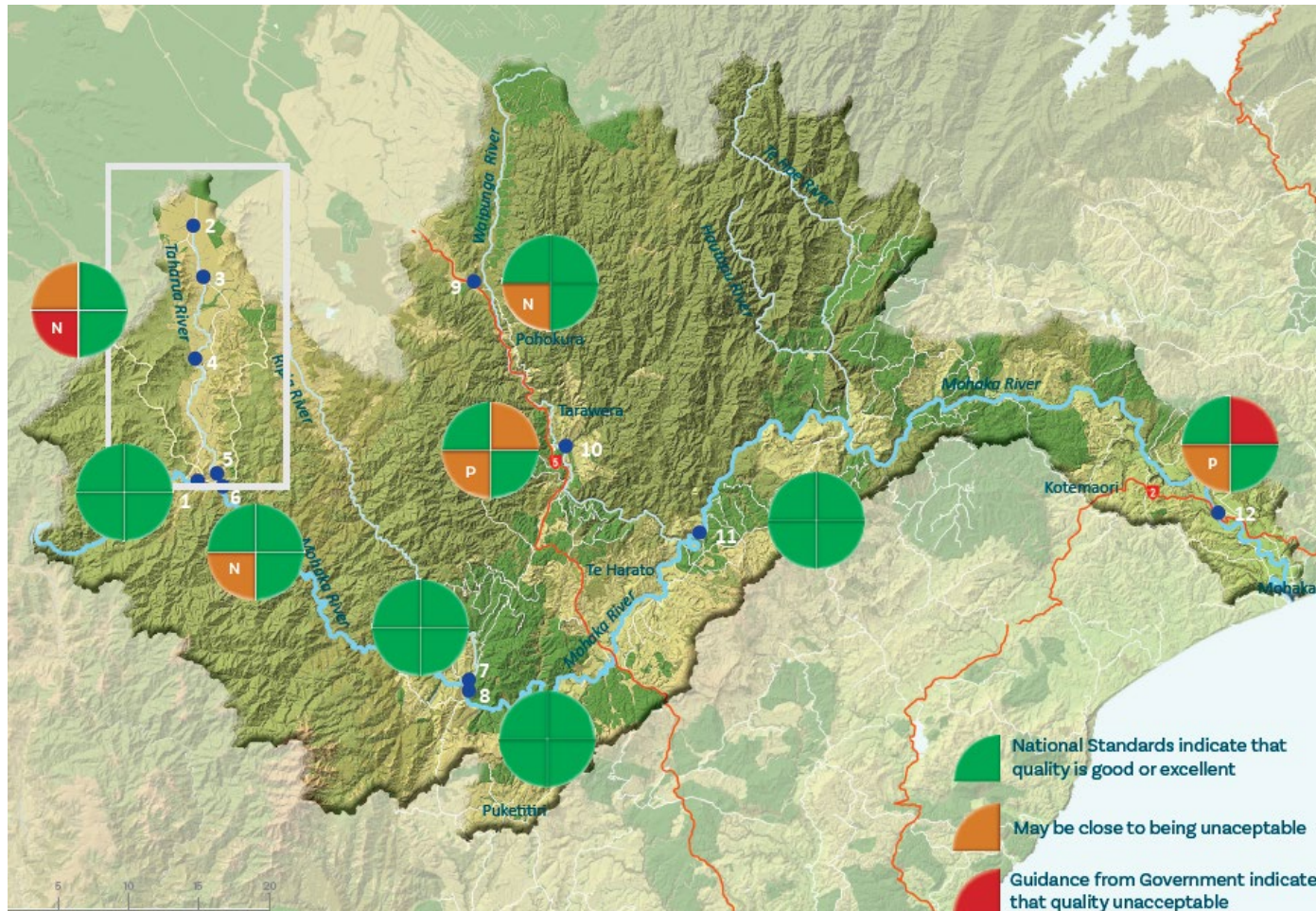


Good or Excellent

At risk of being unacceptable

Unacceptable

Mohaka – current state



What else do we know?



- River flows
- Water quality at monitoring sites
- Topography, geology & soil
- Vegetation cover, extent of wetlands
- Land use
- Potential outstanding values – environmental, cultural

- For information:

<https://www.hbrc.govt.nz/hawkes-bay/projects/mohaka-catchment/>

<https://www.hbrc.govt.nz/environment/farmers-hub/>

What else does HBRC need?



- Mātauranga
- What is important to you about the awa that needs protecting
- Any other areas of significance, wai tapu, mahinga kai
- Your participation in helping to:
 - Set the catchment vision & measures of successful outcomes
 - Identify how we can address the issues & harness the opportunities
 - Set the targets, limits, timeframes, rules
 - Develop an action plan to maintain/restore the awa
 - Take action

Discussion 2: What are the problems & opportunities?

- What are the problems & opportunities for the Mohaka
- How will we know when the problems are being addressed?
- How quickly do we need to respond



Next steps

- - - - -
- Collate all feedback
- Online survey – vision, issues, priorities – early 2021
- Working groups develop options for priority issues
- Round 2 public feedback on options – mid 2021

- Please leave your contact details so we can keep in touch
- Contact HBRC on mohaka.plan@hbrc.govt.nz

Karakia Whakamutunga Closing Prayer

Unuhia, unuhia
Unuhia ki te uru tapu nui
Kia wātea, kia māmā, te ngākau,
te tinana, te wairua I te ara
takatā
Koia rā a Rongo, whakairia ki
runga
Kia tina! TINA!
Haumi e, Hui e! TĀIKI E!

Draw on, draw on
Draw on the supreme sacredness
To clear, to free the heart, the body
and the spirit of mankind

Rongo, suspended high above us

Draw together, Affirm!