

Waikare Gorge Ecology Maps

Aquatic Ecology: Map Figure 1

Basemap Service Credits: Eagle Technology, LINZ, StatsNZ, NIWA, Natural Earth, © OpenStreetMap contributors., Hawkes Bay RC, LINZ
 Map displayed in NZGD 2000 New Zealand Transverse Mercator coordinate system.
 Author: VCS, Stantec (2024)
 Project Code: 310203918
 Client: Waka Kotahi

This document has been prepared based on information provided by others as cited in the data sources. Stantec has not verified the accuracy and/or completeness of this information and shall not be responsible for any errors or omissions which may be incorporated herein as a result. Stantec assumes no responsibility for data supplied in electronic format, and the recipient accepts full responsibility for verifying the accuracy and completeness of the data.

- ▲ SEV Survey Sites
- Road Alignment
- Earthworks Footprint
- 10m Buffer from Earthworks Footprint
- 100m Buffer from Earthworks Footprint
- Proposed Designation Boundary
- Culverts
- Stormwater Treatment Features
- NZ Rivers Centerlines
- SW Proposed Wetland
- Assessed Wetlands



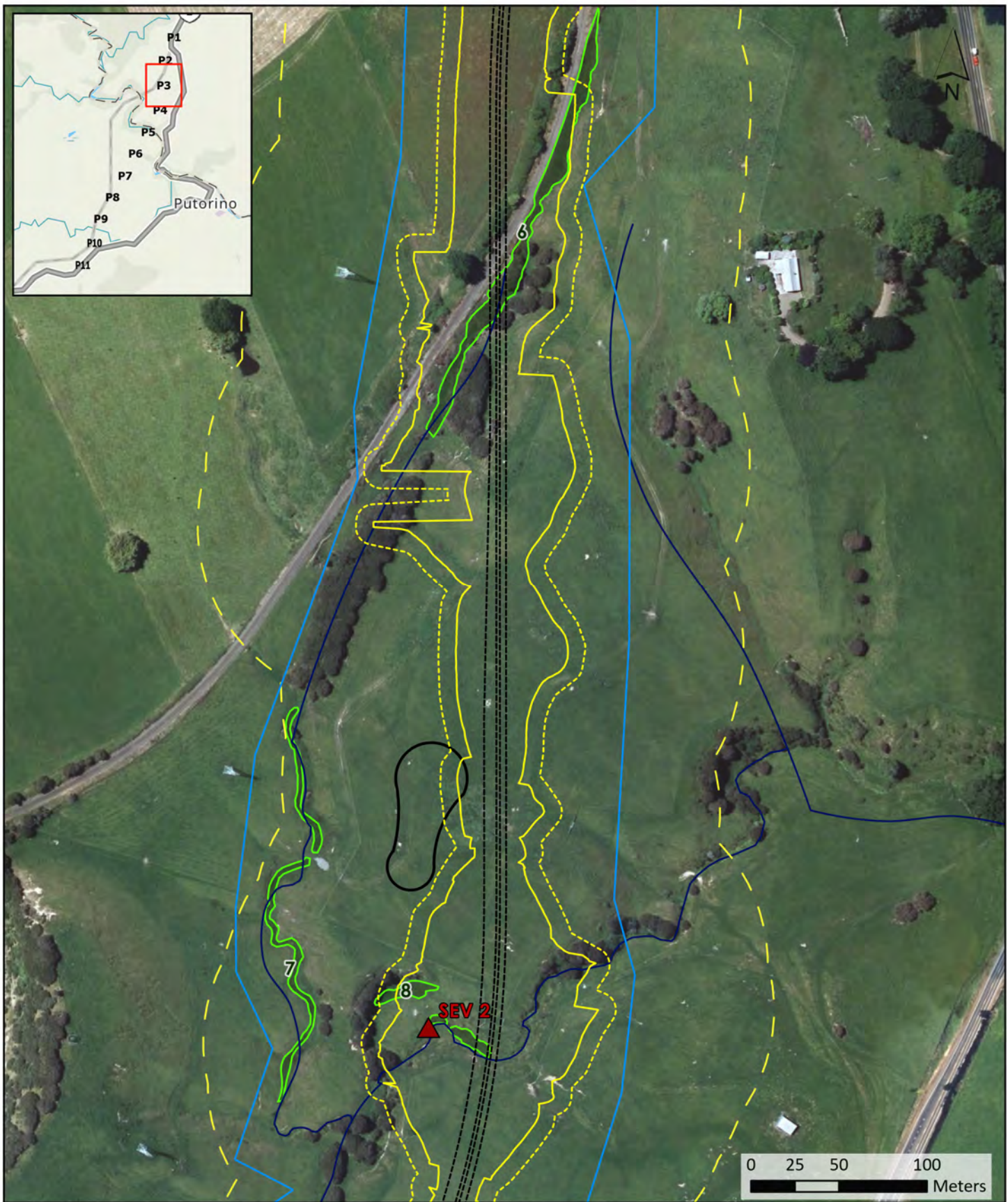
Waikare Gorge Ecology Maps

Aquatic Ecology: Map Figure 2

Basemap Service Credits: Eagle Technology, LINZ, StatsNZ, NIWA, Natural Earth, © OpenStreetMap contributors., Hawkes Bay RC, Maxar
 Map displayed in NZGD 2000 New Zealand Transverse Mercator coordinate system.
 Author: VCS, Stantec (2024)
 Project Code: 310203918
 Client: Waka Kotahi

This document has been prepared based on information provided by others as cited in the data sources. Stantec has not verified the accuracy and/or completeness of this information and shall not be responsible for any errors or omissions which may be incorporated herein as a result. Stantec assumes no responsibility for data supplied in electronic format, and the recipient accepts full responsibility for verifying the accuracy and completeness of the data.

- ▲ SEV Survey Sites
- Road Alignment
- Earthworks Footprint
- 10m Buffer from Earthworks Footprint
- 100m Buffer from Earthworks Footprint
- Proposed Designation Boundary
- Culverts
- Stormwater Treatment Features
- NZ Rivers Centerlines
- SW Proposed Wetland
- Assessed Wetlands



Waikare Gorge Ecology Maps

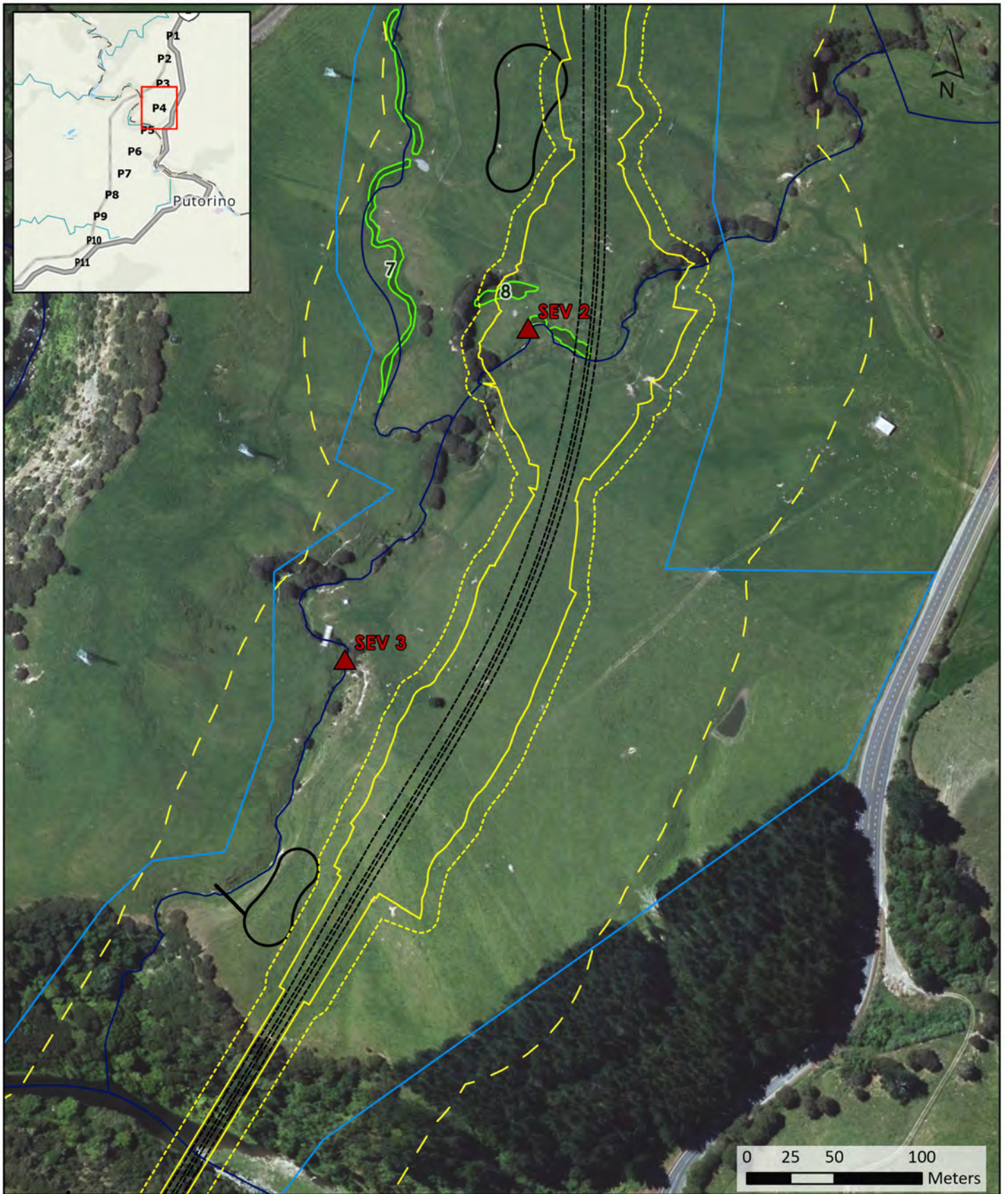
Aquatic Ecology: Map Figure 3

Basemap Service Credits: Eagle Technology, LINZ, StatsNZ, NIWA, Natural Earth, © OpenStreetMap contributors., Hawkes Bay RC, LINZ
 Map displayed in NZGD 2000 New Zealand Transverse Mercator coordinate system.
 Author: VCS, Stantec (2024)
 Project Code: 310203918
 Client: Waka Kotahi

- ▲ SEV Survey Sites
- Culverts
- - - Road Alignment
- Stormwater Treatment Features
- Earthworks Footprint
- NZ Rivers Centerlines
- ⋯ 10m Buffer from Earthworks Footprint
- SW Proposed Wetland
- - - 100m Buffer from Earthworks Footprint
- Assessed Wetlands
- Proposed Designation Boundary

This document has been prepared based on information provided by others as cited in the data sources. Stantec has not verified the accuracy and/or completeness of this information and shall not be responsible for any errors or omissions which may be incorporated herein as a result. Stantec assumes no responsibility for data supplied in electronic format, and the recipient accepts full responsibility for verifying the accuracy and completeness of the data.





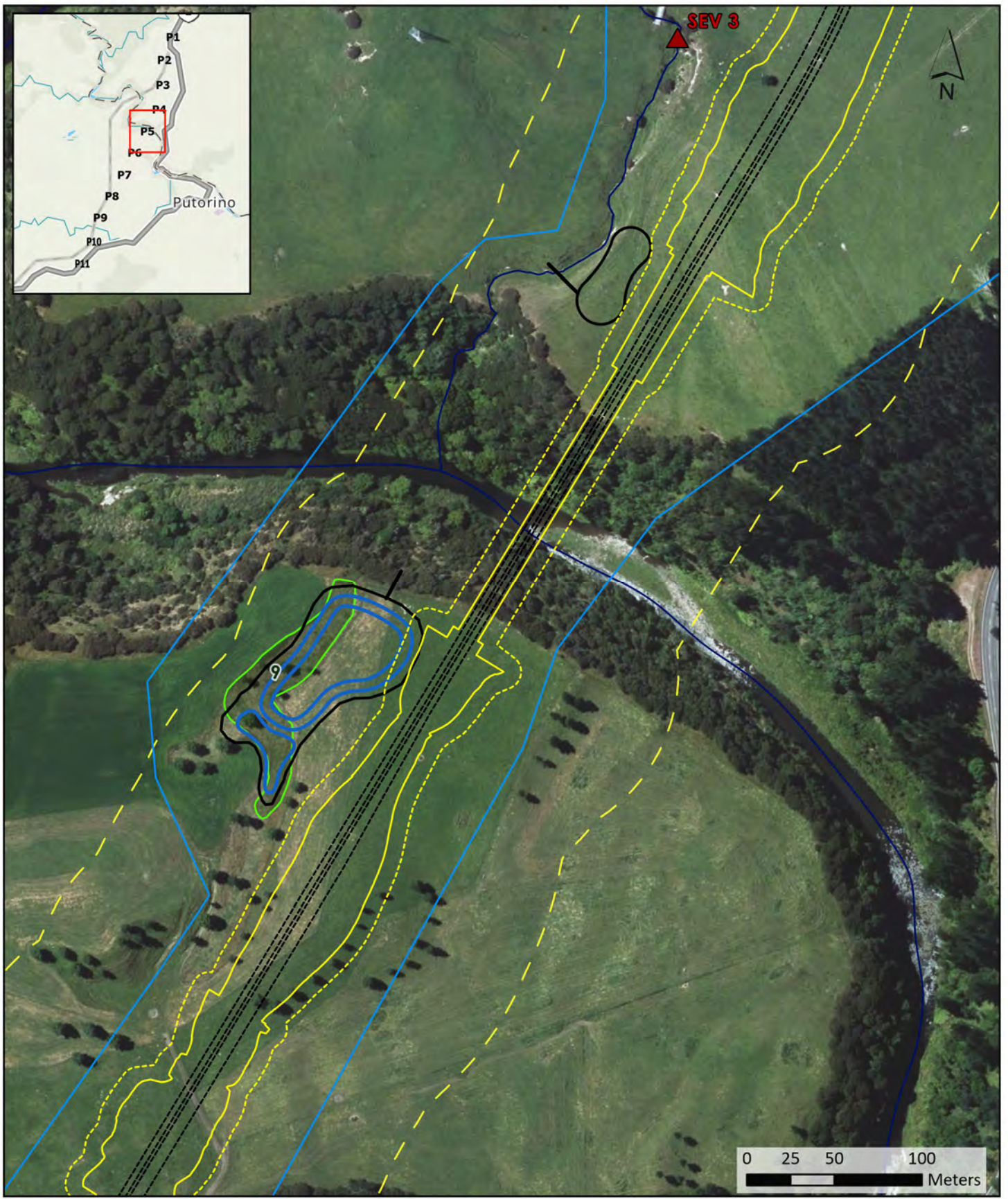
Waikare Gorge Ecology Maps

Aquatic Ecology: Map Figure 4

Basemap Service Credits: Eagle Technology, LINZ, StatsNZ, NIWA, Natural Earth, © OpenStreetMap contributors., Hawkes Bay RC, Maxar
 Map displayed in NZGD 2000 New Zealand Transverse Mercator coordinate system.
 Author: VCS, Stantec (2024)
 Project Code: 310203918
 Client: Waka Kotahi

This document has been prepared based on information provided by others as cited in the data sources. Stantec has not verified the accuracy and/or completeness of this information and shall not be responsible for any errors or omissions which may be incorporated herein as a result. Stantec assumes no responsibility for data supplied in electronic format, and the recipient accepts full responsibility for verifying the accuracy and completeness of the data.

- ▲ SEV Survey Sites
- Road Alignment
- Earthworks Footprint
- 10m Buffer from Earthworks Footprint
- 100m Buffer from Earthworks Footprint
- Proposed Designation Boundary
- Culverts
- Stormwater Treatment Features
- NZ Rivers Centerlines
- SW Proposed Wetland
- Assessed Wetlands



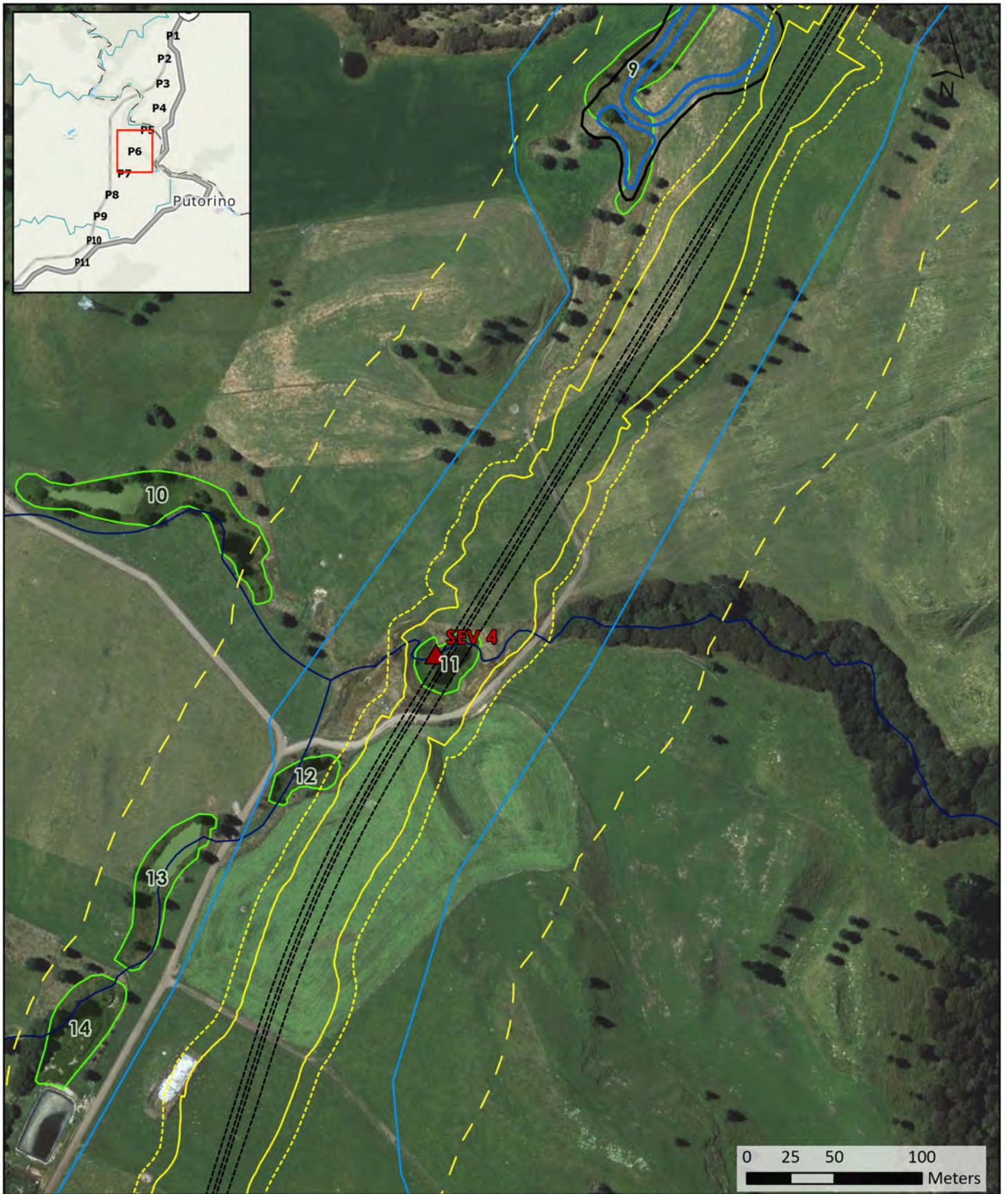
Waikare Gorge Ecology Maps

Aquatic Ecology: Map Figure 5

Basemap Service Credits: Eagle Technology, LINZ, StatsNZ, NIWA, Natural Earth, © OpenStreetMap contributors., Hawkes Bay RC, Maxar
 Map displayed in NZGD 2000 New Zealand Transverse Mercator coordinate system.
 Author: VCS, Stantec (2024)
 Project Code: 310203918
 Client: Waka Kotahi

This document has been prepared based on information provided by others as cited in the data sources. Stantec has not verified the accuracy and/or completeness of this information and shall not be responsible for any errors or omissions which may be incorporated herein as a result. Stantec assumes no responsibility for data supplied in electronic format, and the recipient accepts full responsibility for verifying the accuracy and completeness of the data.

- ▲ SEV Survey Sites
- Road Alignment
- Earthworks Footprint
- 10m Buffer from Earthworks Footprint
- 100m Buffer from Earthworks Footprint
- Proposed Designation Boundary
- Culverts
- Stormwater Treatment Features
- NZ Rivers Centerlines
- SW Proposed Wetland
- Assessed Wetlands



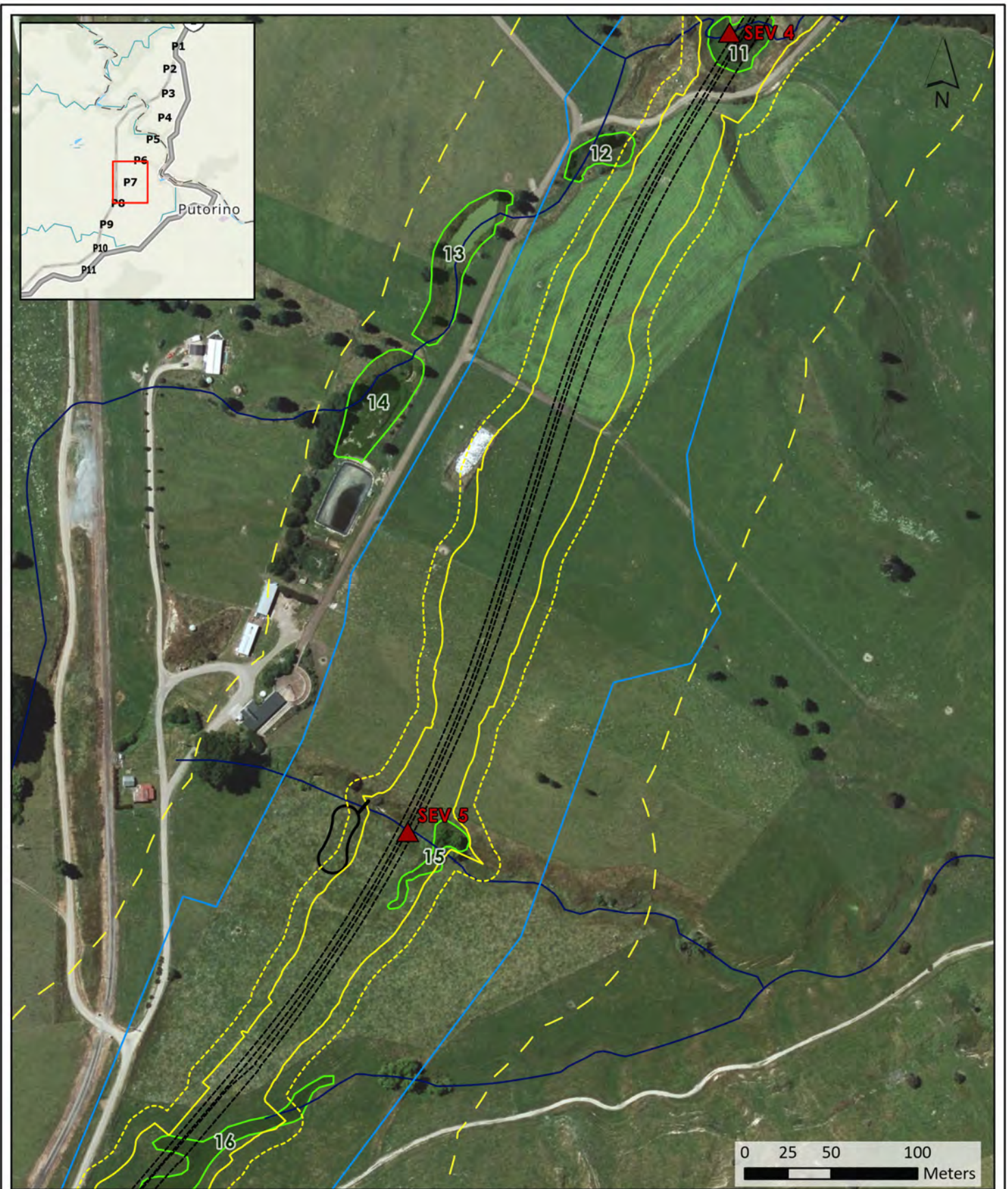
Waikare Gorge Ecology Maps

Aquatic Ecology: Map Figure 6

Basemap Service Credits: Eagle Technology, LINZ, StatsNZ, NIWA, Natural Earth, © OpenStreetMap contributors., Hawkes Bay RC, Maxar
 Map displayed in NZGD 2000 New Zealand Transverse Mercator coordinate system.
 Author: VCS, Stantec (2024)
 Project Code: 310203918
 Client: Waka Kotahi

This document has been prepared based on information provided by others as cited in the data sources. Stantec has not verified the accuracy and/or completeness of this information and shall not be responsible for any errors or omissions which may be incorporated herein as a result. Stantec assumes no responsibility for data supplied in electronic format, and the recipient accepts full responsibility for verifying the accuracy and completeness of the data.

- ▲ SEV Survey Sites
- Road Alignment
- Earthworks Footprint
- ⋯ 10m Buffer from Earthworks Footprint
- - - 100m Buffer from Earthworks Footprint
- Proposed Designation Boundary
- Culverts
- Stormwater Treatment Features
- NZ Rivers Centerlines
- SW Proposed Wetland
- Assessed Wetlands



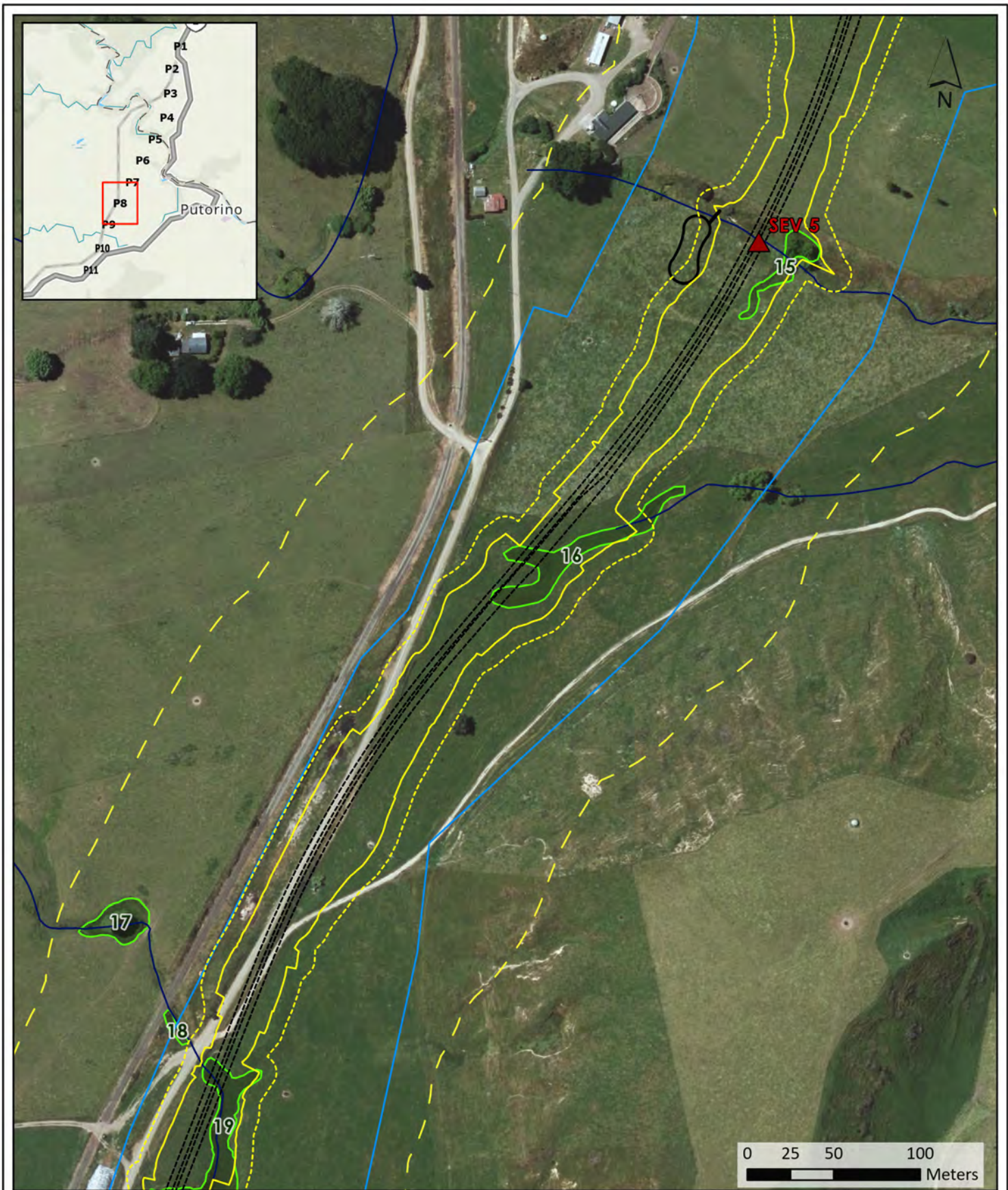
Waikare Gorge Ecology Maps

Aquatic Ecology: Map Figure 7

Basemap Service Credits: Eagle Technology, LINZ, StatsNZ, NIWA, Natural Earth, © OpenStreetMap contributors., Hawkes Bay RC, Maxar
 Map displayed in NZGD 2000 New Zealand Transverse Mercator coordinate system.
 Author: VCS, Stantec (2024)
 Project Code: 310203918
 Client: Waka Kotahi

This document has been prepared based on information provided by others as cited in the data sources. Stantec has not verified the accuracy and/or completeness of this information and shall not be responsible for any errors or omissions which may be incorporated herein as a result. Stantec assumes no responsibility for data supplied in electronic format, and the recipient accepts full responsibility for verifying the accuracy and completeness of the data.

- | | |
|---------------------------------------|-------------------------------|
| SEV Survey Sites | Culverts |
| Road Alignment | Stormwater Treatment Features |
| Earthworks Footprint | NZ Rivers Centerlines |
| 10m Buffer from Earthworks Footprint | SW Proposed Wetland |
| 100m Buffer from Earthworks Footprint | Assessed Wetlands |
| Proposed Designation Boundary | |



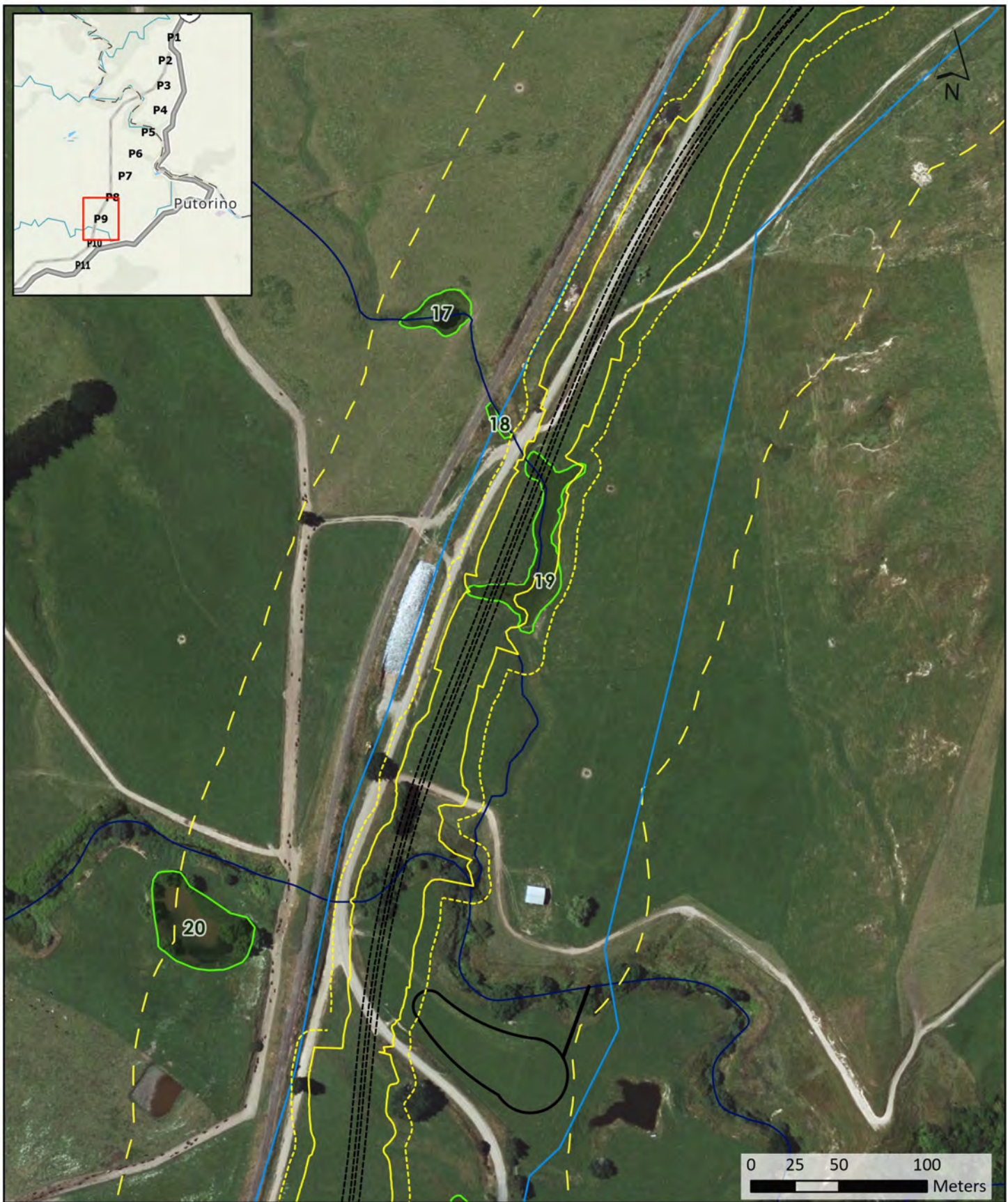
Waikare Gorge Ecology Maps

Aquatic Ecology: Map Figure 8

Basemap Service Credits: Eagle Technology, LINZ, StatsNZ, NIWA, Natural Earth, © OpenStreetMap contributors., Hawkes Bay RC, Maxar
 Map displayed in NZGD 2000 New Zealand Transverse Mercator coordinate system.
 Author: VCS, Stantec (2024)
 Project Code: 310203918
 Client: Waka Kotahi

This document has been prepared based on information provided by others as cited in the data sources. Stantec has not verified the accuracy and/or completeness of this information and shall not be responsible for any errors or omissions which may be incorporated herein as a result. Stantec assumes no responsibility for data supplied in electronic format, and the recipient accepts full responsibility for verifying the accuracy and completeness of the data.

- ▲ SEV Survey Sites
- Road Alignment
- Earthworks Footprint
- 10m Buffer from Earthworks Footprint
- 100m Buffer from Earthworks Footprint
- Proposed Designation Boundary
- Culverts
- Stormwater Treatment Features
- NZ Rivers Centerlines
- SW Proposed Wetland
- Assessed Wetlands



Waikare Gorge Ecology Maps

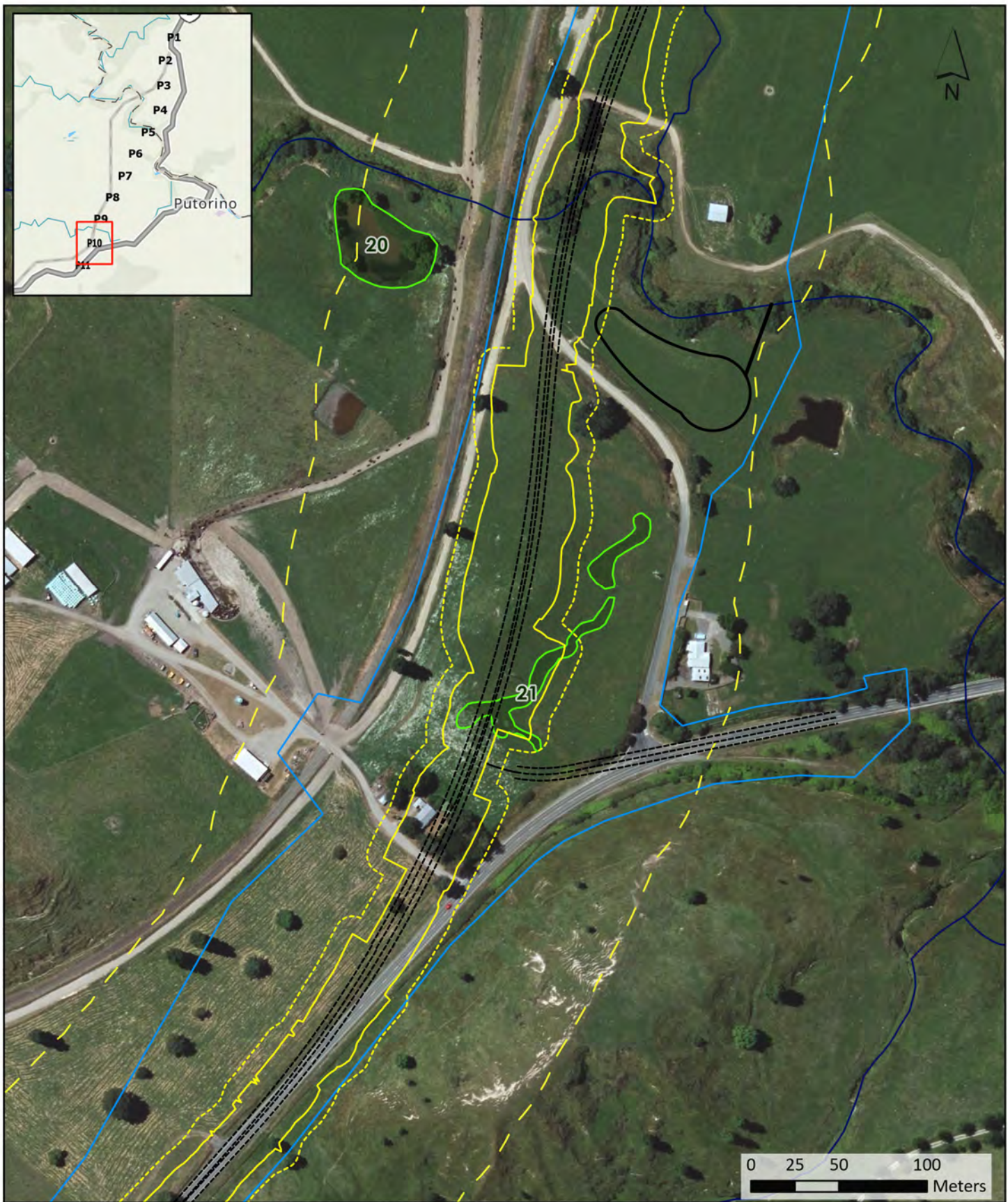
Aquatic Ecology: Map Figure 9

Basemap Service Credits: Eagle Technology, LINZ, StatsNZ, NIWA, Natural Earth, © OpenStreetMap contributors., Hawkes Bay RC, Maxar
 Map displayed in NZGD 2000 New Zealand Transverse Mercator coordinate system.
 Author: VCS, Stantec (2024)
 Project Code: 310203918
 Client: Waka Kotahi

- ▲ SEV Survey Sites
- Road Alignment
- Earthworks Footprint
- ⋯ 10m Buffer from Earthworks Footprint
- 100m Buffer from Earthworks Footprint
- Proposed Designation Boundary
- Culverts
- Stormwater Treatment Features
- NZ Rivers Centerlines
- SW Proposed Wetland
- Assessed Wetlands

This document has been prepared based on information provided by others as cited in the data sources. Stantec has not verified the accuracy and/or completeness of this information and shall not be responsible for any errors or omissions which may be incorporated herein as a result. Stantec assumes no responsibility for data supplied in electronic format, and the recipient accepts full responsibility for verifying the accuracy and completeness of the data.





Waikare Gorge Ecology Maps

Aquatic Ecology: Map Figure 10

Basemap Service Credits: Eagle Technology, LINZ, StatsNZ, NIWA, Natural Earth, © OpenStreetMap contributors., Hawkes Bay RC, Maxar
 Map displayed in NZGD 2000 New Zealand Transverse Mercator coordinate system.
 Author: VCS, Stantec (2024)
 Project Code: 310203918
 Client: Waka Kotahi

This document has been prepared based on information provided by others as cited in the data sources. Stantec has not verified the accuracy and/or completeness of this information and shall not be responsible for any errors or omissions which may be incorporated herein as a result. Stantec assumes no responsibility for data supplied in electronic format, and the recipient accepts full responsibility for verifying the accuracy and completeness of the data.

- ▲ SEV Survey Sites
- Road Alignment
- Earthworks Footprint
- 10m Buffer from Earthworks Footprint
- 100m Buffer from Earthworks Footprint
- Proposed Designation Boundary
- Culverts
- Stormwater Treatment Features
- NZ Rivers Centerlines
- SW Proposed Wetland
- Assessed Wetlands





Waikare Gorge Ecology Maps

Aquatic Ecology: Map Figure 11

Basemap Service Credits: Eagle Technology, LINZ, StatsNZ, NIWA, Natural Earth, © OpenStreetMap contributors., Hawkes Bay RC, Maxar
 Map displayed in NZGD 2000 New Zealand Transverse Mercator coordinate system.
 Author: VCS, Stantec (2024)
 Project Code: 310203918
 Client: Waka Kotahi

This document has been prepared based on information provided by others as cited in the data sources. Stantec has not verified the accuracy and/or completeness of this information and shall not be responsible for any errors or omissions which may be incorporated herein as a result. Stantec assumes no responsibility for data supplied in electronic format, and the recipient accepts full responsibility for verifying the accuracy and completeness of the data.

- ▲ SEV Survey Sites
- Road Alignment
- Earthworks Footprint
- ⋯ 10m Buffer from Earthworks Footprint
- 100m Buffer from Earthworks Footprint
- Proposed Designation Boundary
- Culverts
- Stormwater Treatment Features
- NZ Rivers Centerlines
- SW Proposed Wetland
- Assessed Wetlands